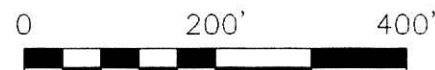


PAINT TOWNSHIP
N.W. & S.W. QTRS. SECTION 32
T-15 N; R-11 W
HOLMES COUNTY, OHIO

SURVEYED FOR: ELI A. MAST



SCALE: 1"=200'

- 5/8" REBAR FOUND UNLESS OTHERWISE NOTED
- ▲ R.R. SPIKE FOUND
- 5/8" REBAR WITH I.D. CAP SET I.D. CAP MARKED "BAKER 6938"
- △ R.R. SPIKE SET

REFERENCES:

- DEED VOL. 260 PAGE 206
- DEED VOL. 212 PAGE 612
- DEED VOL. 212 PAGE 425
- DEED VOL. 226 PAGE 26
- O.R. VOL. 172 PAGE 2420
- O.R. VOL. 121 PAGE 928
- PLAT VOL. 8 PAGE 154
- PLAT VOL. 16 PAGE 327
- PLAT VOL. 17 PAGE 626
- PLAT VOL. 16 PAGE 328
- PLAT VOL. 19 PAGE 152
- PLAT VOL. 17 PAGE 625
- PLAT VOL. 10 PAGE 287
- PLAT VOL. 18 PAGE 371
- PLAT VOL. 16 PAGE 602
- PLAT VOL. 10 PAGE 527

BEARINGS FROM PLAT VOL. 16 PAGE 327

200600042544
Filed for Record in
HOLMES COUNTY, OH
SALLY MILLER
03-28-2006 At 09:52 am.
PLAT MED 43.20
DR Book 19 Page 660 - 660
ORV 187 pages 2260+2262

200600042544
SAMUEL M
STEINEL ATTY
MILLERSBURG, OH

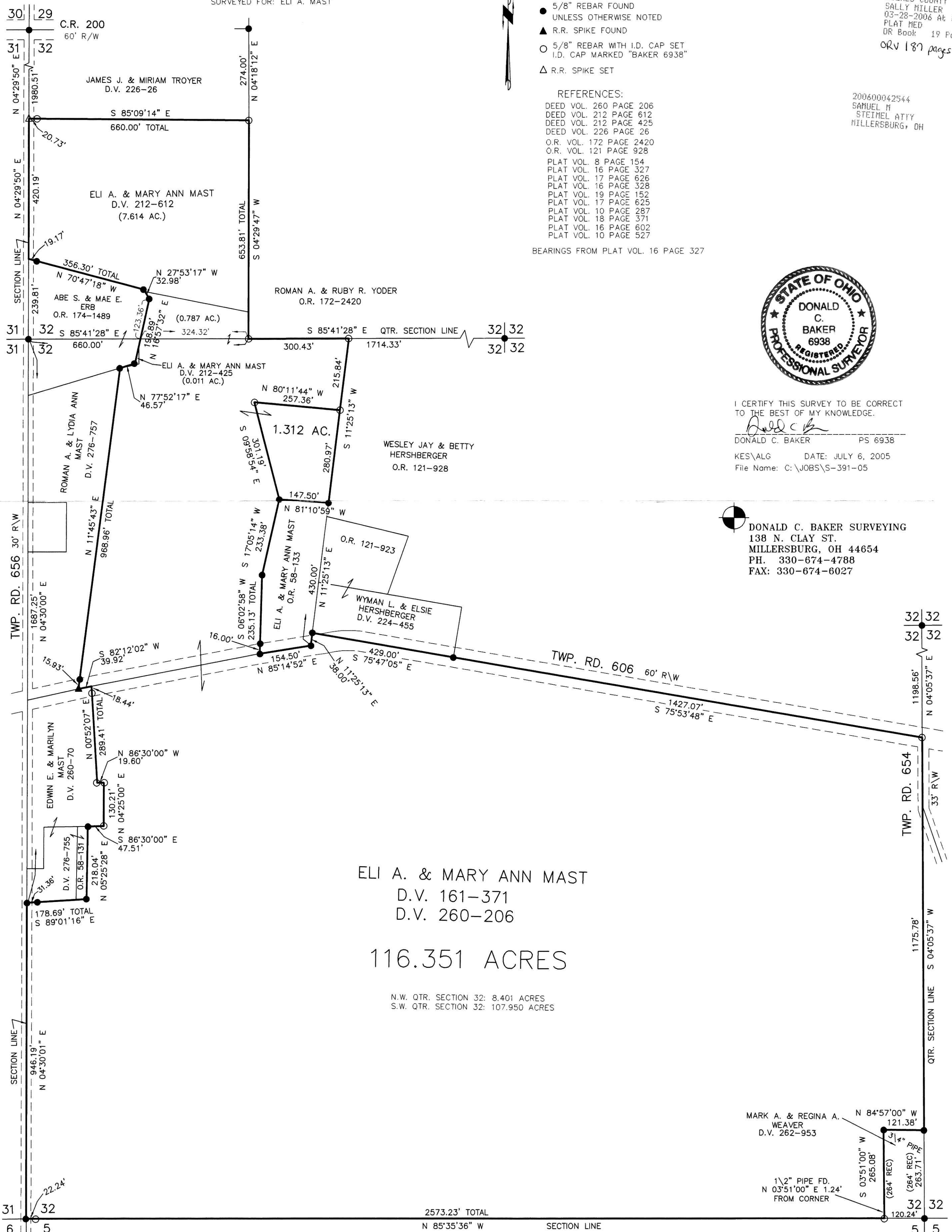


I CERTIFY THIS SURVEY TO BE CORRECT TO THE BEST OF MY KNOWLEDGE.

DONALD C. BAKER PS 6938
KES\ALG DATE: JULY 6, 2005
File Name: C:\JOBS\S-391-05



DONALD C. BAKER SURVEYING
138 N. CLAY ST.
MILLERSBURG, OH 44654
PH. 330-674-4788
FAX: 330-674-6027



ELI A. & MARY ANN MAST
D.V. 161-371
D.V. 260-206

116.351 ACRES

N.W. QTR. SECTION 32: 8.401 ACRES
S.W. QTR. SECTION 32: 107.950 ACRES

PLAT APPROVED

2/17/2006