

CORRECTION OF PRIOR SURVEY

Recorded in Plat Volume 10, Page 480

HARDY TOWNSHIP

VOL 0019 PAGE 618

LOT 32, 1st. QTR. T-9N, R-7W

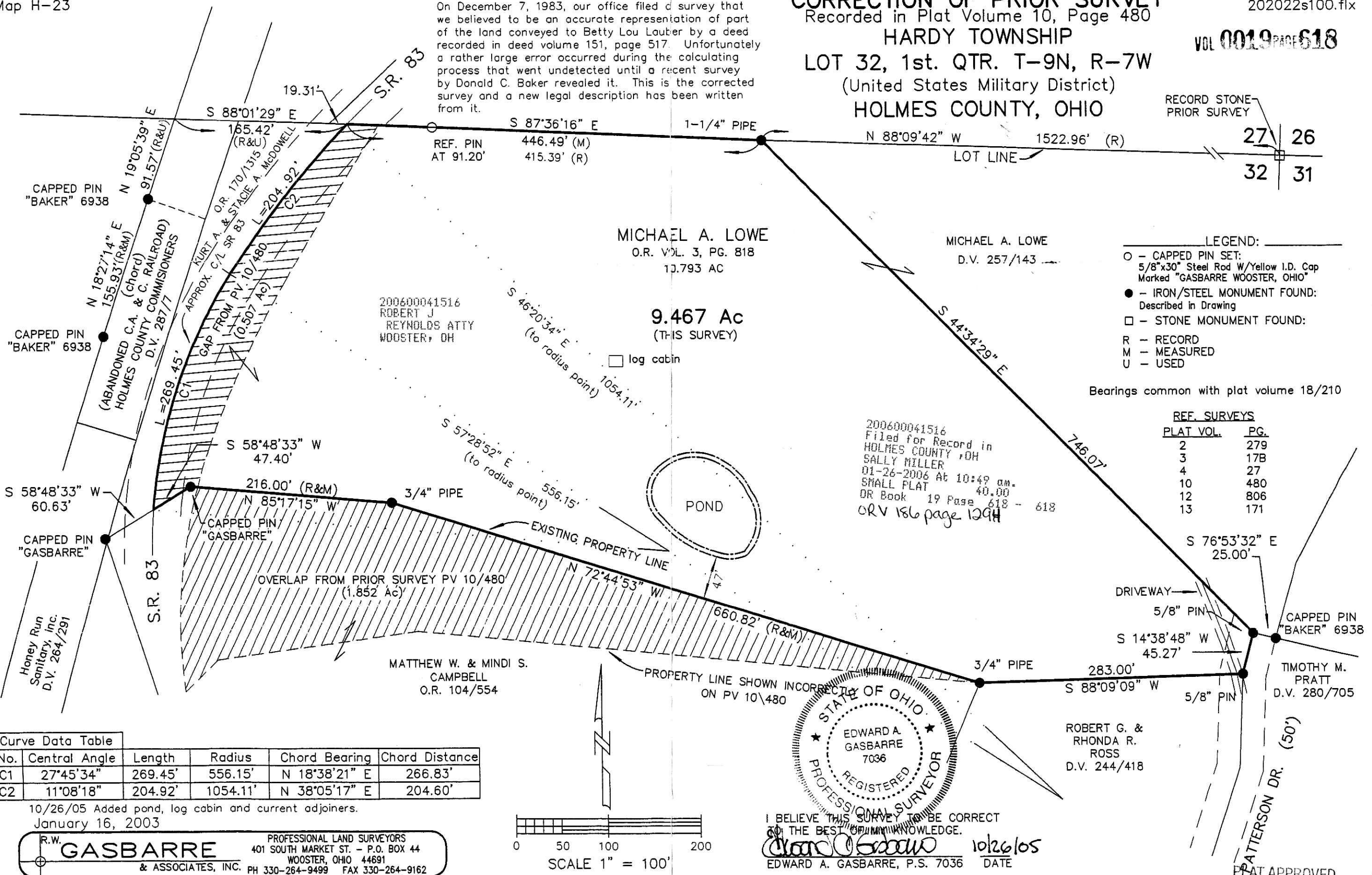
(United States Military District)

HOLMES COUNTY, OHIO

RECORD STONE
PRIOR SURVEY

27 26
32 31

On December 7, 1983, our office filed a survey that we believed to be an accurate representation of part of the land conveyed to Betty Lou Lautier by a deed recorded in deed volume 151, page 517. Unfortunately a rather large error occurred during the calculating process that went undetected until a recent survey by Donald C. Baker revealed it. This is the corrected survey and a new legal description has been written from it.



- LEGEND:**
- - CAPPED PIN SET:
5/8"x30" Steel Rod W/Yellow I.D. Cap
Marked "GASBARRE WOOSTER, OHIO"
 - - IRON/STEEL MONUMENT FOUND:
Described in Drawing
 - - STONE MONUMENT FOUND:
 - R - RECORD
 - M - MEASURED
 - U - USED

Bearings common with plat volume 18/210

REF. SURVEYS

PLAT VOL.	PG.
2	279
3	17B
4	27
10	480
12	806
13	171

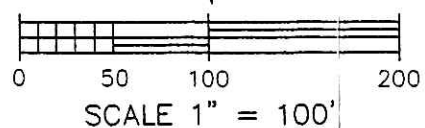
200600041516
Filed for Record in
HOLMES COUNTY, OH
SALLY MILLER
01-26-2006 At 10:49 am.
SMALL PLAT 40.00
OR Book 19 Page 618 - 618
ORV 186 page 129H

Curve Data Table

No.	Central Angle	Length	Radius	Chord Bearing	Chord Distance
C1	27°45'34"	269.45'	556.15'	N 18°38'21" E	266.83'
C2	11°08'18"	204.92'	1054.11'	N 38°05'17" E	204.60'

10/26/05 Added pond, log cabin and current adjoiners.
January 16, 2003

R.W. **GASBARRE** & ASSOCIATES, INC.
PROFESSIONAL LAND SURVEYORS
401 SOUTH MARKET ST. - P.O. BOX 44
WOOSTER, OHIO 44691
PH 330-264-9499 FAX 330-264-9162



I BELIEVE THIS SURVEY TO BE CORRECT
TO THE BEST OF MY KNOWLEDGE.
Edward A. Gasbarre 10/26/05
EDWARD A. GASBARRE, P.S. 7036 DATE

PLAT APPROVED

1/13/2006