

Instrument Book Page
200500040769 DR 19 576

200500040769
CRITCHFIELD...
& JOHNSTON ATTYS
MILLERSBURG, OH

HARDY TOWNSHIP 1ST. QTR., LOTS 16 & 17 T-9 N; R-7 W HOLMES COUNTY, OHIO

SURVEYED FOR: CASTLE NURSING HOMES, INC.



SCALE: 1"=100'

- ▲ R.R. SPIKE FOUND
- 5/8" REBAR FOUND
- 5/8" REBAR WITH I.D. CAP SET I.D. CAP MARKED "BAKER 6938"

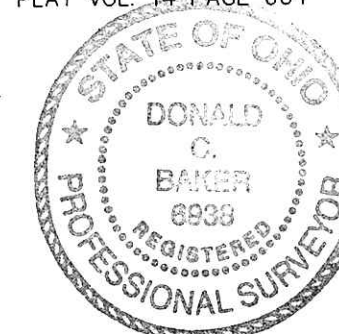
200500040769
Filed for Record in
HOLMES COUNTY, OH
SALLY MILLER
12-15-2005 At 09:30 am.
SMALL PLAT 40.00
OR Book 19 Page 576 - 576

OR 185p 1597

REFERENCES:

- DEED VOL. 230 PAGE 462
- DEED VOL. 263 PAGE 870
- DEED VOL. 265 PAGE 600 & 945
- DEED VOL. 257 PAGE 634
- O.R. VOL. 185 PAGE 1336
- O.R. VOL. 185 PAGE 1334
- O.R. VOL. 185 PAGE 1331
- PLAT VOL. 7 PAGE 115
- PLAT VOL. 12 PAGE 502
- PLAT VOL. 14 PAGES 472, 583 & 604
- PLAT VOL. 19 PAGE 570

BEARINGS FROM
PLAT VOL. 14 PAGE 604



I CERTIFY THIS SURVEY TO BE CORRECT
TO THE BEST OF MY KNOWLEDGE.

Donald C. Baker
DONALD C. BAKER PS 6938

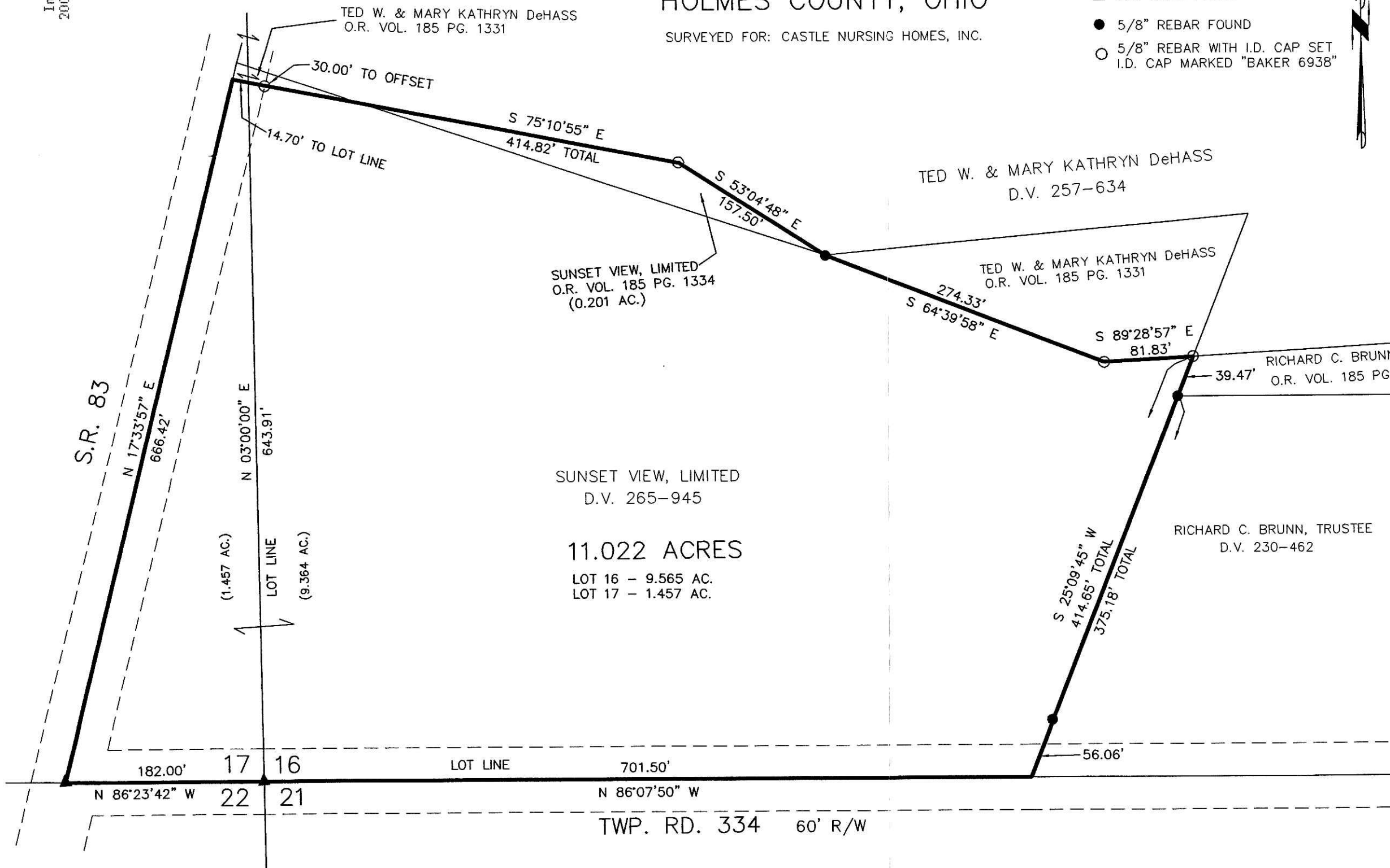
DATE: DEC. 13, 2005
JDD\ERZ
File Name: C:\WORK\S-149A-05
DATA: S-164-05



DONALD C. BAKER SURVEYING
138 N. CLAY ST.
MILLERSBURG, OH 44654
PH. 330-674-4788
FAX: 330-674-6027

PLAT APPROVED

12/14/2005-B



SUNSET VIEW, LIMITED
D.V. 265-945

11.022 ACRES

LOT 16 - 9.565 AC.
LOT 17 - 1.457 AC.

RICHARD C. BRUNN, TRUSTEE
D.V. 230-462

RICHARD C. BRUNN, TRUSTEE
O.R. VOL. 185 PG. 1336

TED W. & MARY KATHRYN DeHASS
O.R. VOL. 185 PG. 1331

TED W. & MARY KATHRYN DeHASS
D.V. 257-634

TED W. & MARY KATHRYN DeHASS
O.R. VOL. 185 PG. 1331

SUNSET VIEW, LIMITED
O.R. VOL. 185 PG. 1334
(0.201 AC.)