

VOL 0019-548

200500040302
Filed for Record in
HOLMES COUNTY, OH
SALLY MILLER
11-18-2005 At 12:31 pm.
SMALL PLAT 40.00
OR Book 19 Page 548 - 548
ORV 184 page 3042

KILLBUCK TOWNSHIP
N.W. QTR. SECTION 2
T-8 N; R-8 W
HOLMES COUNTY, OHIO

SURVEYED FOR: ROGER RICHARDS



SCALE: 1"=200'

- STONE FOUND
- 5/8" REBAR FOUND
UNLESS OTHERWISE NOTED
- 5/8" REBAR WITH I.D. CAP SET
I.D. CAP MARKED "BAKER 6938"

REFERENCES:

DEED VOL. 261 PAGE 1002
O.R. VOL. 154 PAGE 687
O.R. VOL. 181 PAGE 1011

PLAT VOL. 12 PAGE 840

BEARINGS FROM PLAT VOL. 12 PAGE 840

200500040302
CRITCHFIELD CRITCHFIELD JOHNSTON
MILLERSBURG, OH 44654

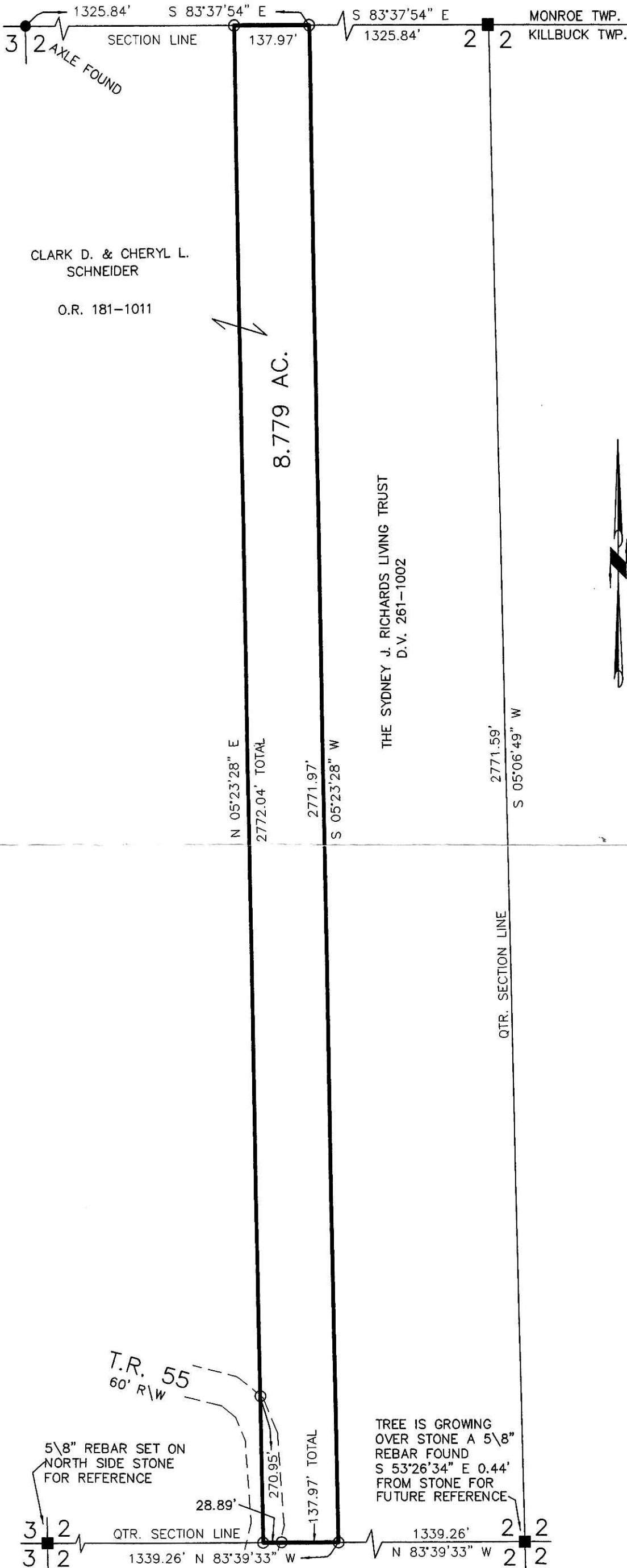


I CERTIFY THIS SURVEY TO BE CORRECT
TO THE BEST OF MY KNOWLEDGE.

Donald C. Baker
DONALD C. BAKER PS 6938
FDB\ERZ DATE: JUNE 13, 2005
File Name: C:\JOBS\S-330-05
REVISED OCTOBER 12, 2005

PLAT APPROVED

11/15/2005



CLARK D. & CHERYL L.
SCHNEIDER
O.R. 181-1011

THE SYDNEY J. RICHARDS LIVING TRUST
D.V. 261-1002

TREE IS GROWING
OVER STONE A 5/8"
REBAR FOUND
S 53°26'34" E 0.44'
FROM STONE FOR
FUTURE REFERENCE

DONALD C. BAKER SURVEYING
138 N. CLAY ST.
MILLERSBURG, OH 44654
PH. 330-674-4788
FAX: 330-674-6027