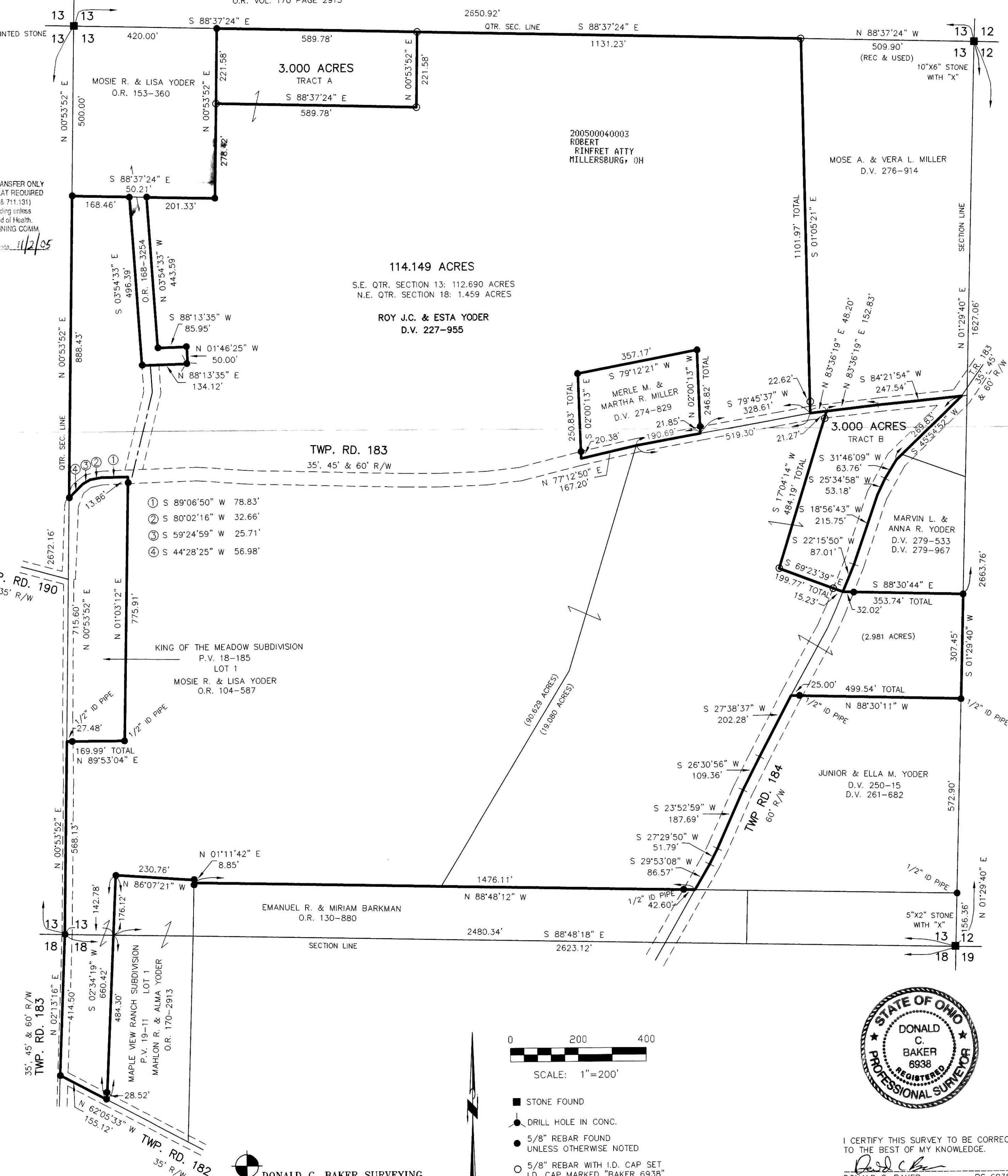


CLARK TOWNSHIP
S.E. QTR. SECTION 13
N.E. QTR. SECTION 18
T-8 N; R-5 W
HOLMES COUNTY, OHIO

REFERENCES:

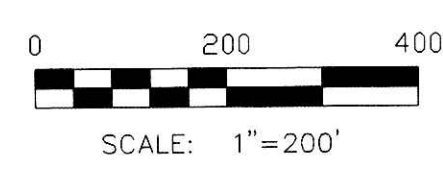
- DEED VOL. 227 PAGE 955
- DEED VOL. 250 PAGE 15
- DEED VOL. 261 PAGE 682
- DEED VOL. 274 PAGE 829
- DEED VOL. 276 PAGE 914
- DEED VOL. 279 PAGES 533 & 967
- O.R. VOL. 104 PAGE 587
- O.R. VOL. 130 PAGE 880
- O.R. VOL. 168 PAGE 3254
- O.R. VOL. 170 PAGE 2913
- PLAT VOL. 10 PAGE 603
- PLAT VOL. 11 PAGE 37
- PLAT VOL. 12 PAGES 225 & 596
- PLAT VOL. 14 PAGES 140 & 851
- PLAT VOL. 16 PAGES 196, 513 & 991
- PLAT VOL. 18 PAGES 185, 459 & 845
- BEARINGS FROM PLAT VOL. 18 PAGE 459

200500040003
Filed for Record in
HOLMES COUNTY, OH
SALLY MILLER
11-04-2005 At 09:22 am.
PLAT MED 43.20
OR Book 19 Page 536 - 536
ORV 184 page 1878



APPROVED FOR TRANSFER ONLY
NO SUBDIVISION PLAT REQUIRED
(O.R.C. 711.001 & 711.131)
Lot(s) not for building unless
approved by Board of Health,
HOLMES CO. PLANNING COMM.
By *[Signature]* Date 11/2/05

114.149 ACRES
S.E. QTR. SECTION 13: 112.690 ACRES
N.E. QTR. SECTION 18: 1.459 ACRES
ROY J.C. & ESTA YODER
D.V. 227-955



- STONE FOUND
- DRILL HOLE IN CONC.
- 5/8\"/>
- 5/8\"/>

I CERTIFY THIS SURVEY TO BE CORRECT
TO THE BEST OF MY KNOWLEDGE.
[Signature]
DONALD C. BAKER PS 6938
DATE: SEPT. 10, 2005
ERZ-KES-FDB
File Name: C:\WORK\S-531-05\ERZ

PLAT APPROVED

10/12/2005

DONALD C. BAKER SURVEYING
138 N. CLAY ST.
MILLERSBURG, OH 44654
PH. 330-674-4788
FAX: 330-674-6027