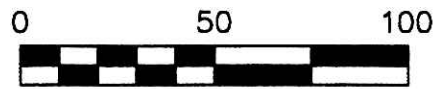


BERLIN TOWNSHIP
1ST. QTR., LOT 21
T-9 N; R-6 W
HOLMES COUNTY, OHIO

SURVEYED FOR: MERLE MULLET

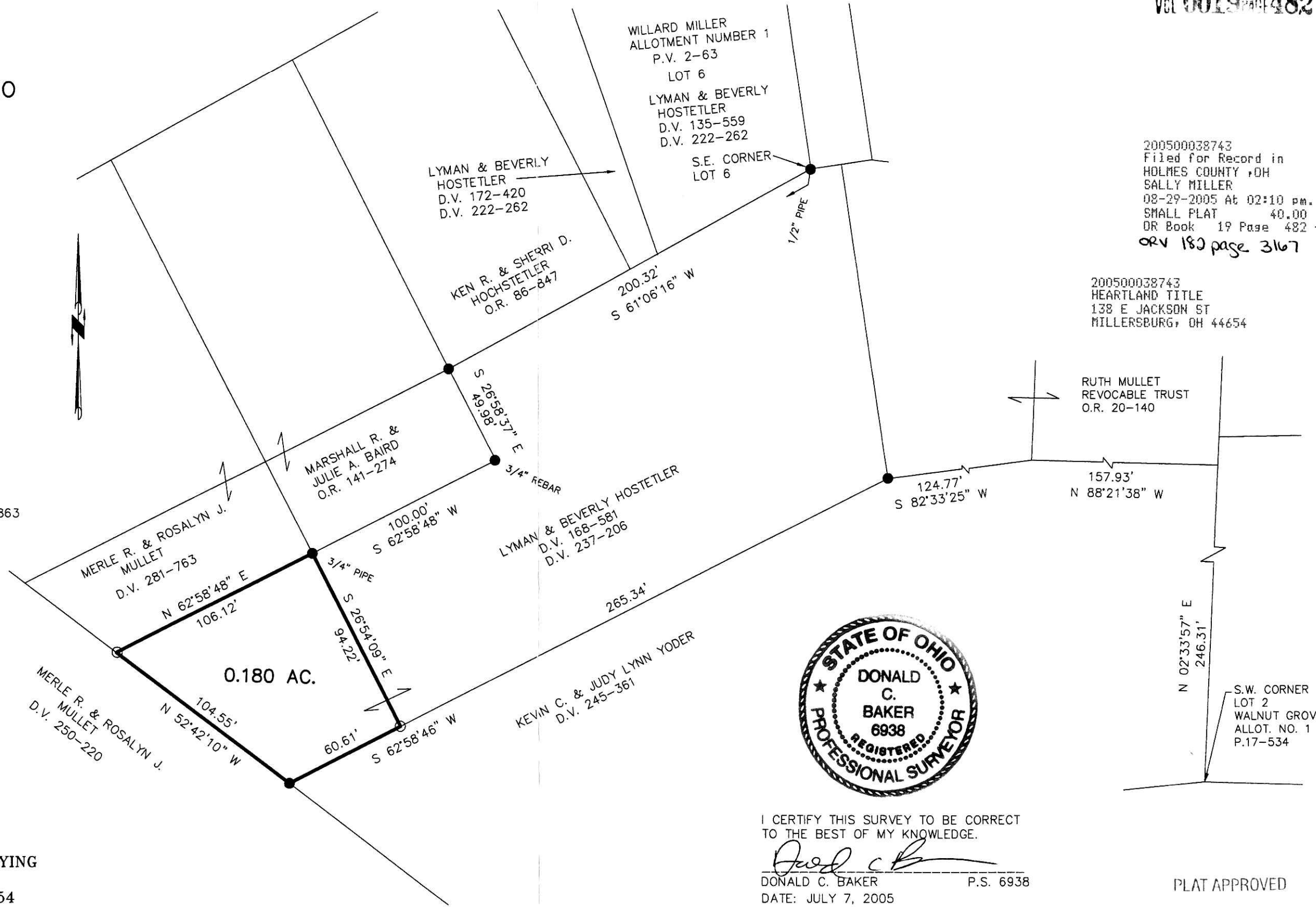


SCALE: 1"=50'

- 5/8" REBAR FOUND UNLESS OTHERWISE NOTED
- 5/8" REBAR WITH I.D. CAP SET I.D. CAP MARKED "BAKER 6938"

REFERENCES

- DEED VOL. 237 PAGE 206
 - DEED VOL. 250 PAGE 220
 - DEED VOL. 281 PAGE 763
 - DEED VOL. 245 PAGE 361
 - O.R. VOL. 141 PAGE 274
 - PLAT VOL. 10 PAGE 863
 - PLAT VOL. 7 PAGE 52
 - PLAT VOL. 2 PAGE 63
 - PLAT VOL. 5 PAGE 22
 - PLAT VOL. 3 PAGE 20 B
- BEARINGS FROM PLAT VOL 10 PAGE 863



VOL 0019 PAGE 482

200500038743
 Filed for Record in
 HOLMES COUNTY, OH
 SALLY MILLER
 08-29-2005 At 02:10 pm.
 SMALL PLAT 40.00
 OR Book 19 Page 482 - 482
 ORV 180 page 3167

200500038743
 HEARTLAND TITLE
 138 E JACKSON ST
 MILLERSBURG, OH 44654

RUTH MULLET
 REVOCABLE TRUST
 O.R. 20-140

S.W. CORNER
 LOT 2
 WALNUT GROVE
 ALLOT. NO. 1
 P.17-534



I CERTIFY THIS SURVEY TO BE CORRECT
 TO THE BEST OF MY KNOWLEDGE.

Donald C. Baker

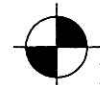
DONALD C. BAKER P.S. 6938

DATE: JULY 7, 2005

KES\ALG
 File Name: WORK2\S-411-05

PLAT APPROVED

8/5/2005



DONALD C. BAKER SURVEYING
 138 N. CLAY ST.
 MILLERSBURG, OHIO, 44654
 PH. 330-674-4788
 FAX. 330-674-6027