

200500036862  
PAUL A  
MILLER LAW  
MILLERSBURG, OH

KILLBUCK TOWNSHIP  
N.E. & N.W. QTRS. SECTION 8  
T-8 N; R-7 W  
HOLMES COUNTY, OHIO

SURVEYED FOR: BETTY JANE KEPLER



SCALE: 1"=200'

- 5/8" REBAR FOUND UNLESS OTHERWISE NOTED
- 5/8" REBAR WITH I.D. CAP SET I.D. CAP MARKED "BAKER 6938"

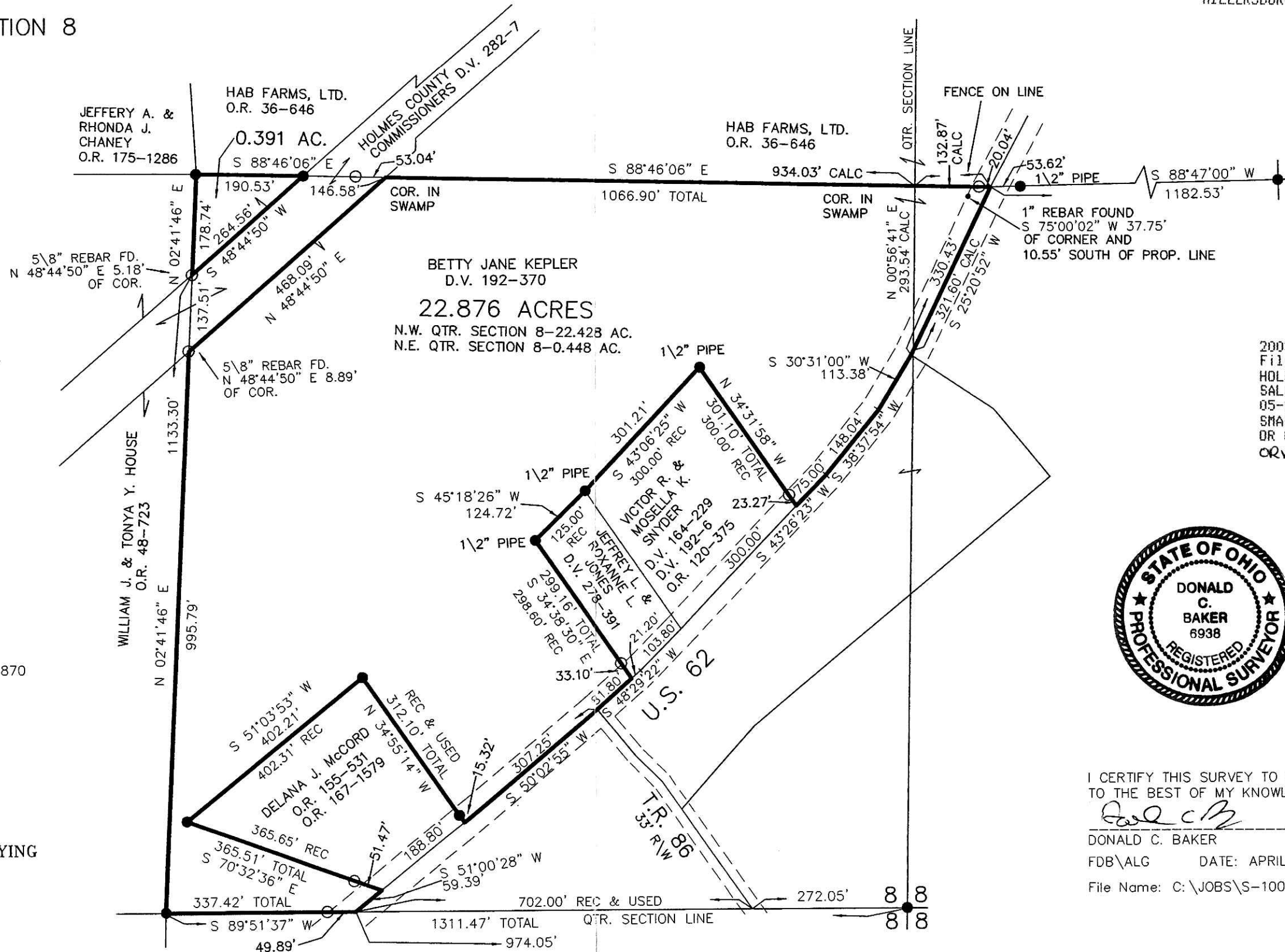
REFERENCES:

- DEED VOL. 192 PAGE 370
- DEED VOL. 192 PAGE 6
- DEED VOL. 278 PAGE 391
- O.R. VOL. 165 PAGE 89
- O.R. VOL. 48 PAGE 723
- O.R. VOL. 36 PAGE 646
- PLAT VOL. 5 PAGE 104
- PLAT VOL. 12 PAGE 310
- PLAT VOL. 8 PAGE 309
- PLAT VOL. 19 PAGE 202
- PLAT VOL. 15 PAGE 156
- PLAT VOL. 14 PAGE 70
- PLAT VOL. 9 PAGE 81
- PLAT VOL. 17 PAGE 870

BEARINGS FROM PLAT VOL. 17 PAGE 870



DONALD C. BAKER SURVEYING  
138 N. CLAY ST.  
MILLERSBURG, OH 44654  
PH. 330-674-4788  
FAX: 330-674-6027



200500036862  
Filed for Record in  
HOLMES COUNTY, OH  
SALLY MILLER  
05-24-2005 At 02:09 pm.  
SMALL PLAT 40.00  
OR Book 19 Page 399 - 399  
CRV 180 page 1279



I CERTIFY THIS SURVEY TO BE CORRECT  
TO THE BEST OF MY KNOWLEDGE.

*Donald C. Baker*

DONALD C. BAKER PS 6938

FDB\ALG DATE: APRIL 11, 2005

File Name: C:\JOBS\S-100-05

PLAT APPROVED

4/19/2005

Instrument OR Book Page  
200500036862 OR 19 399