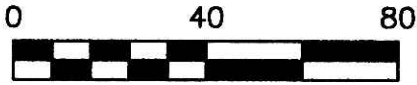


VOL 0019-389



SCALE: 1"=40'

VILLAGE OF MILLERSBURG  
PART OF OUTLOT 4  
T-9 N; R-7 W  
HOLMES COUNTY, OHIO

SURVEYED FOR: CLIFF HARTLEY

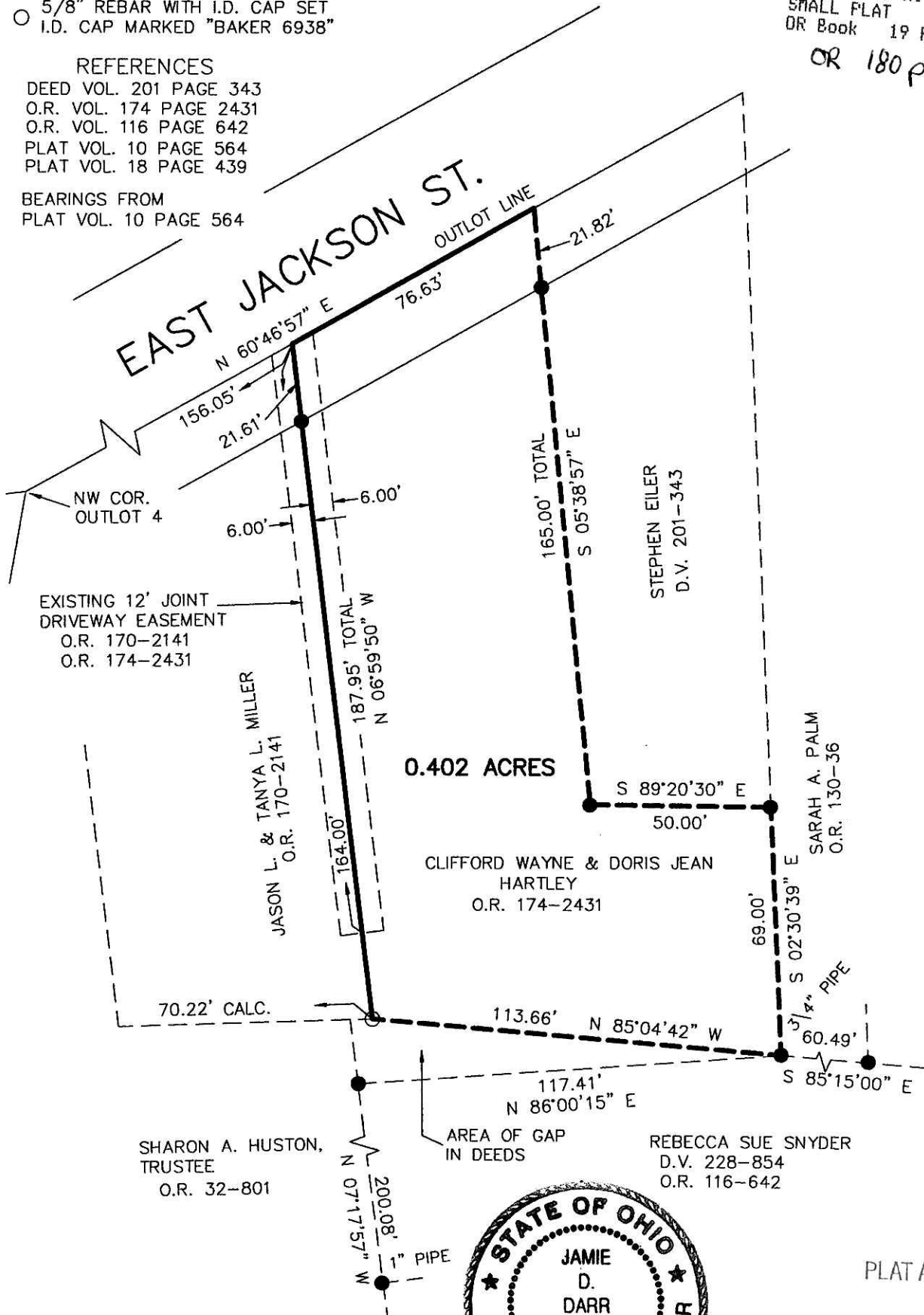
200500036675  
Filed for Record in  
HOLMES COUNTY, OH  
SALLY MILLER  
05-13-2005 At 10:13 am.  
SMALL PLAT 40.00  
OR Book 19 Page 389 - 389  
OR 180 p 382

- 5/8" REBAR FOUND UNLESS OTHERWISE NOTED
- 5/8" REBAR WITH I.D. CAP SET I.D. CAP MARKED "BAKER 6938"

REFERENCES

DEED VOL. 201 PAGE 343  
O.R. VOL. 174 PAGE 2431  
O.R. VOL. 116 PAGE 642  
PLAT VOL. 10 PAGE 564  
PLAT VOL. 18 PAGE 439

BEARINGS FROM  
PLAT VOL. 10 PAGE 564



SHARON A. HUSTON, TRUSTEE  
O.R. 32-801

REBECCA SUE SNYDER  
D.V. 228-854  
O.R. 116-642



PLAT APPROVED

5/2/2005

I CERTIFY THIS SURVEY TO BE CORRECT TO THE BEST OF MY KNOWLEDGE.

*Jamie D. Darr*  
JAMIE D. DARR P.S. 7755

DATE: APRIL 21, 2005

JDD\ALG  
File Name: WORK2\S-238-05\ERZ



DONALD C. BAKER SURVEYING  
138 N. CLAY ST.  
MILLERSBURG, OHIO, 44654  
PH. 330-674-4788  
FAX. 330-674-6027