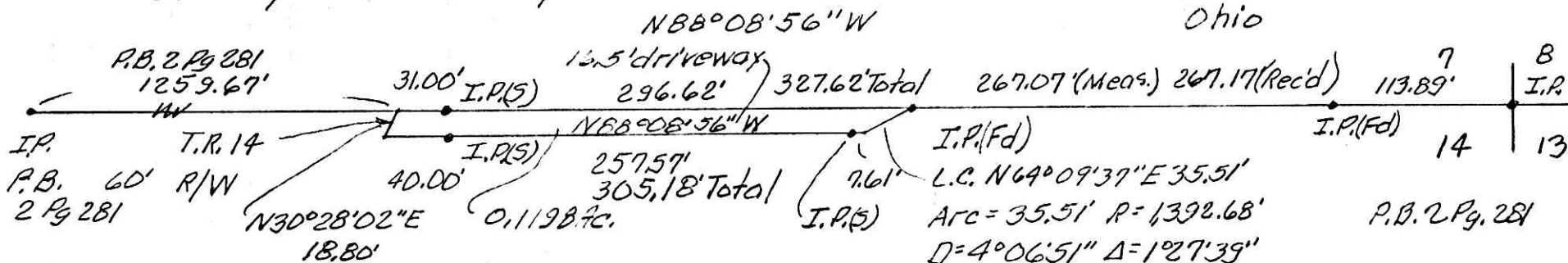


Richland Twp.  
 Holmes Co.  
 Ohio

Resurvey of 16.5' driveway.



Norma M. Craven  
 D.V. 238 Pg. 869

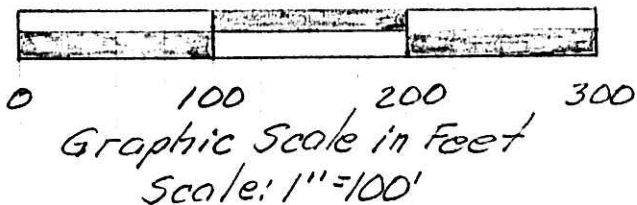
Resurvey of Tract V of  
 D.V. 277 Pg. 10  
 D. June Watts

Holmes Co. Comm. (The old railroad  
 tract)  
 D.V. 282 Pg. 7  
 P.B. 2 Pg. 281

Bearing Basis; P.B. 2 Pg. 281

Data used: P.B. 2 Pg. 281  
 D.V. 277 Pg. 10 Tract V

Survey in Sec. 14, T8N, R9W  
 Richland Twp, Holmes Co., Ohio.



Robert L. Kasner P.E., P.S.  
 7007 S.R. 39  
 Millersburg, Ohio, 44657  
 3306749146

All set I.P.s are 5/8" x 30" rebar  
 Cap R.L.K. 5193



Robert L. Kasner P.E., P.S.  
 12/07/04

200500036367  
 HOLMES CTY TITLE

PLAT APPROVED

3/18/2005