

RIPLEY TOWNSHIP  
S.E. QTR. SECTION 14  
T-17 N; R-14 W  
HOLMES COUNTY, OHIO

SURVEYED FOR: JANE GRAVEN

200500035643  
JANE GRAVEN  
10770 TR 262  
MILLERSBURG, OH 44654

200500035643  
Filed for Record in  
HOLMES COUNTY, OH  
SALLY MILLER  
03-15-2005 At 08:16 am.  
SMALL PLAT 40.00  
OR Book 19 Page 332 - 332  
ORV 178 Page 2643



I CERTIFY THIS SURVEY TO BE CORRECT  
TO THE BEST OF MY KNOWLEDGE.

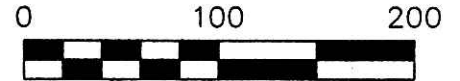
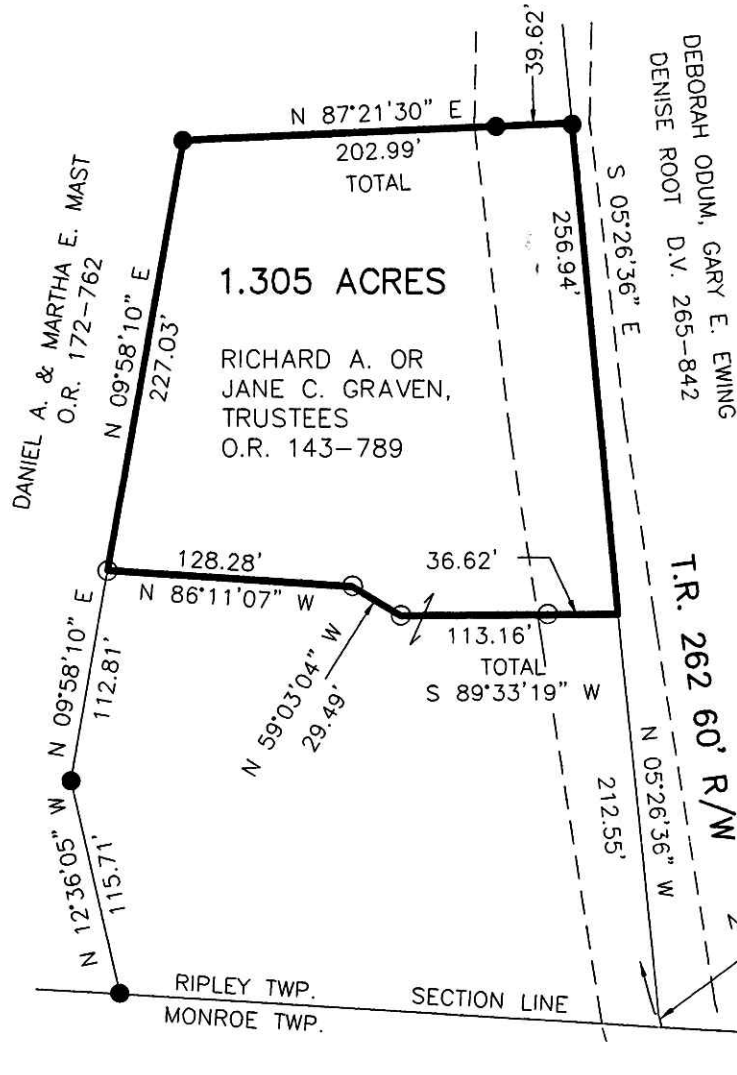
*Donald C. Baker*

DONALD C. BAKER P.S. 6938  
DATE: MARCH 3, 2005

KES/AEG  
File Name: WORK2\S-106-05\MLD



DONALD C. BAKER SURVEYING  
138 N. CLAY ST.  
MILLERSBURG, OHIO, 44654  
PH. 330-674-4788  
FAX. 330-674-6027



SCALE: 1"=100'

- 5/8" REBAR FOUND UNLESS OTHERWISE NOTED
- 5/8" REBAR WITH I.D. CAP SET I.D. CAP MARKED "BAKER 6938"

REFERENCES

- O.R. VOL. 143 PAGE 789
- O.R. VOL. 172 PAGE 762
- PLAT VOL. 14 PAGE 834
- PLAT VOL. 18 PAGE 571

BEARINGS FROM PLAT  
VOL. 14 PAGE 834

T.R. 262 60' R/W

14 | 13

PLAT APPROVED

*3/11/2005B*