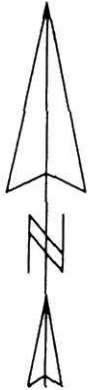
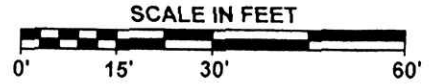


Scale 1" = 30' Date 6-07-04 P.B. P. O.R. 169 P. 719 Drawn By SRV

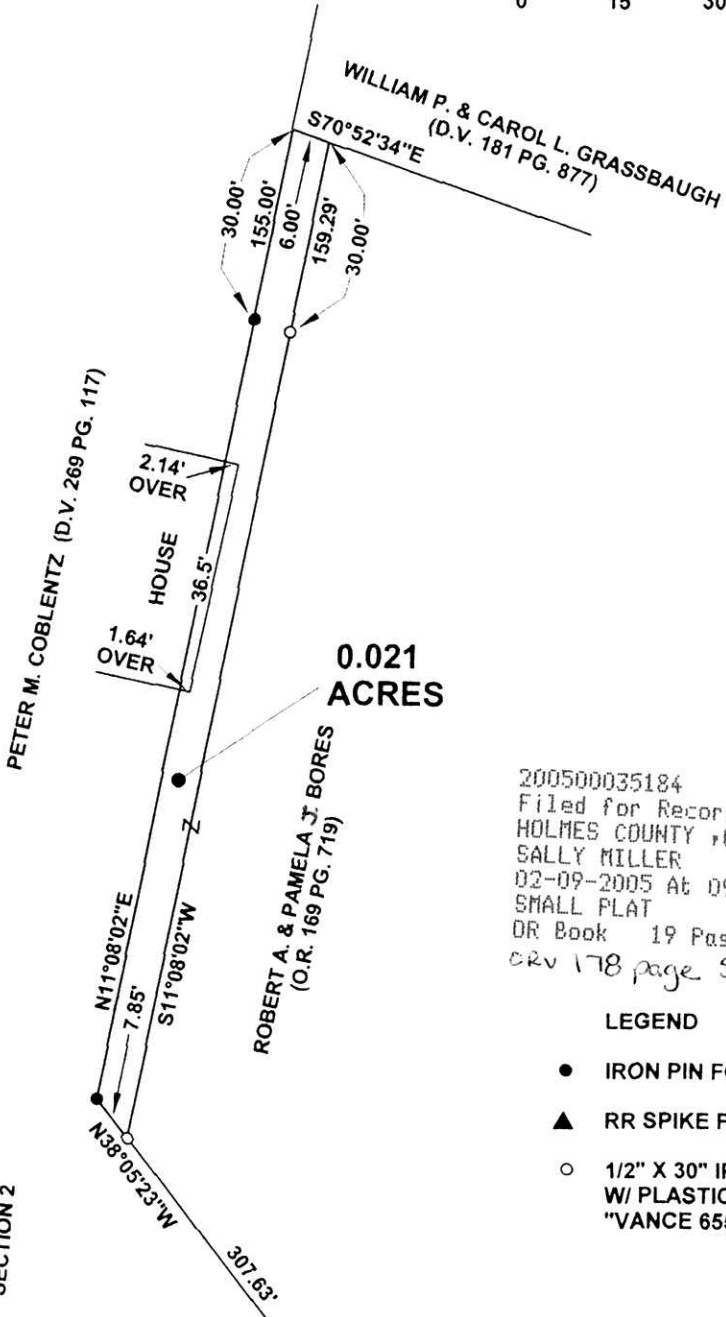


BEARING BASIS
 THE WEST LINE OF SECTION 2
 AS N04°45'05"E FROM
 PLAT VOL. 14 PG. 343



REFERENCE MATERIALS

- PLAT VOL. 4 PG. 113
- PLAT VOL. 12 PG. 190
- PLAT VOL. 14 PG. 343
- DEED VOL. 166 PG. 528
- TAX MAP
- RICHLAND TOWNSHIP
- SHEET R - 20



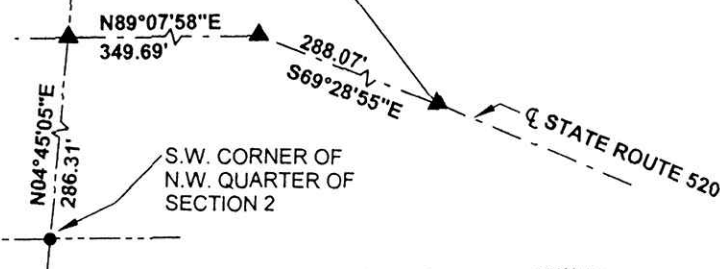
200500035184
 Filed for Record in
 HOLMES COUNTY, OH
 SALLY MILLER
 02-09-2005 At 09:44 am.
 SMALL PLAT 40.00
 DR Book 19 Page 307 - 307
 crv 178 page 587

LEGEND

- IRON PIN FOUND
- ▲ RR SPIKE FOUND
- 1/2" X 30" IRON PIN SET
 W/ PLASTIC CAP STAMPED
 "VANCE 6553"

APPROVED FOR TRANSFER ONLY
 NO SUBDIVISION PLAT REQUIRED
 (O.R.C. 711.001 & 711.131)
 Lot(s) not for building unless
 approved by Board of Health.
 HOLMES CO. PLANNING COMM.

By SRV Date 2/7/05



PLAT APPROVED

2/4/2005

200500035184
 SAMUEL M
 STEINEL ATTY
 MILLERSBURG, OH



Samuel W. Vance
 Registered Surveyor No. 6553

I hereby certify that the foregoing drawing was prepared from an actual survey of the premises.