



SCALE: 1"=200'

- 5/8" REBAR FOUND UNLESS OTHERWISE NOTED
- 5/8" REBAR WITH I.D. CAP SET I.D. CAP MARKED "BAKER 6938"

REFERENCES:

DEED VOL. 202 PAGE 94  
 O.R. VOL. 69 PAGE 127  
 PLAT VOL. 14 PAGE 150  
 PLAT VOL. 17 PAGE 497  
 PLAT VOL. 16 PAGE 333  
 BEARINGS FROM PLAT VOL. 14 PAGE 150



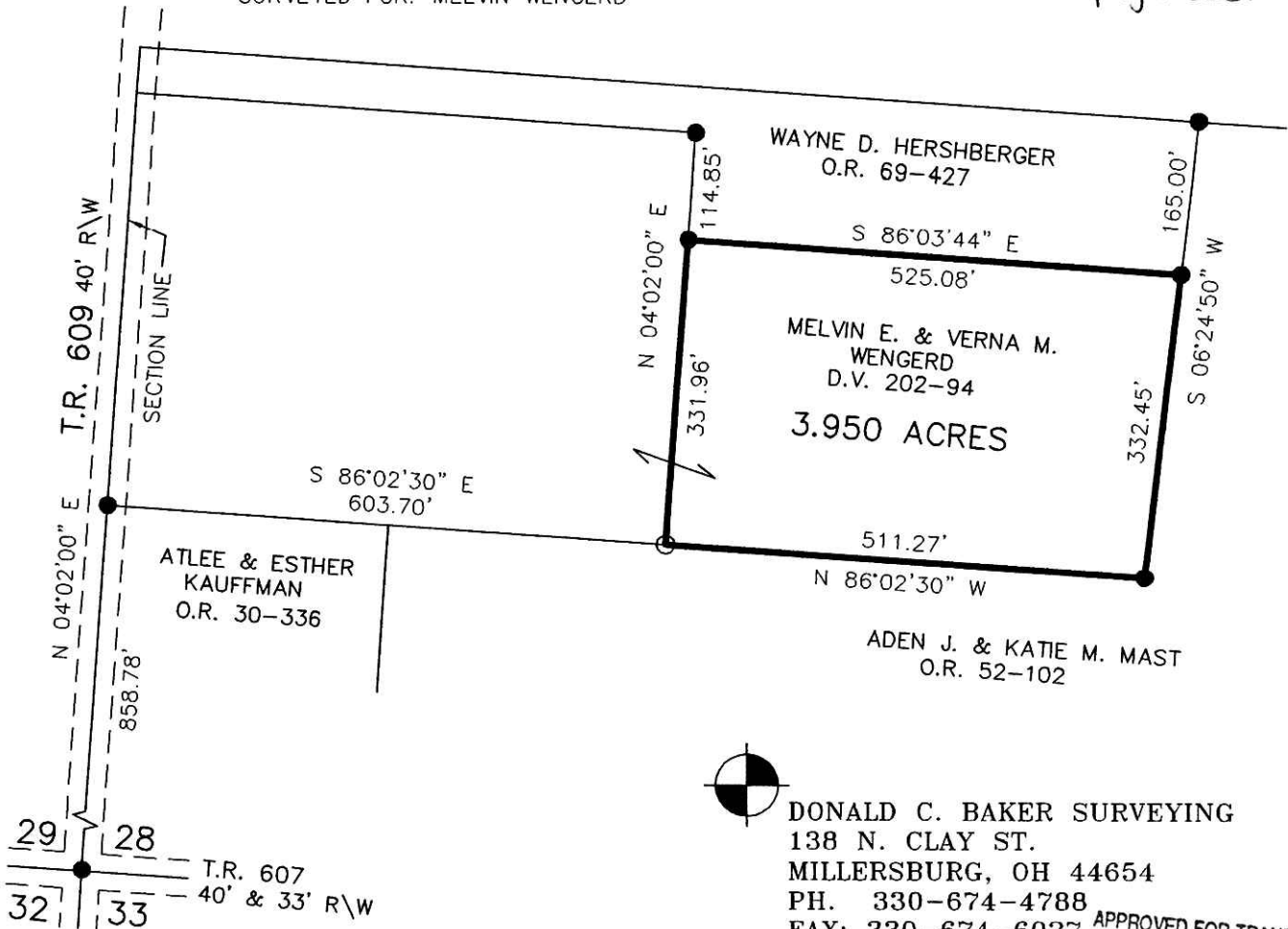
I CERTIFY THIS SURVEY TO BE CORRECT TO THE BEST OF MY KNOWLEDGE.

*Donald C. Baker*  
 DONALD C. BAKER PS 6938  
 ERZ\KES DATE: DEC. 20, 2004  
 File Name: C:\JOBS\S-858-04

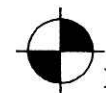
SALT CREEK TOWNSHIP  
 S.W. QTR. SECTION 28  
 T-15 N; R-12 W  
 HOLMES COUNTY, OHIO

SURVEYED FOR: MELVIN WENGERD

200500035037  
 Filed for Record in  
 HOLMES COUNTY, OH  
 SALLY MILLER  
 02-01-2005 At 01:43 pm.  
 SMALL PLAT 40.00  
 OR Book 19 Page 295 - 295  
 OR vol 177 page 3381



Instrument 200500035037 OR Book Page 19 295



DONALD C. BAKER SURVEYING  
 138 N. CLAY ST.  
 MILLERSBURG, OH 44654  
 PH. 330-674-4788  
 FAX: 330-674-6027

PLAT APPROVED

APPROVED FOR TRANSFER ONLY  
 NO SUBDIVISION PLAT REQUIRED  
 (O.R.C. 711.001 & 711.131)  
 Lot(s) not for building unless  
 approved by Board of Health