

REFERENCES:

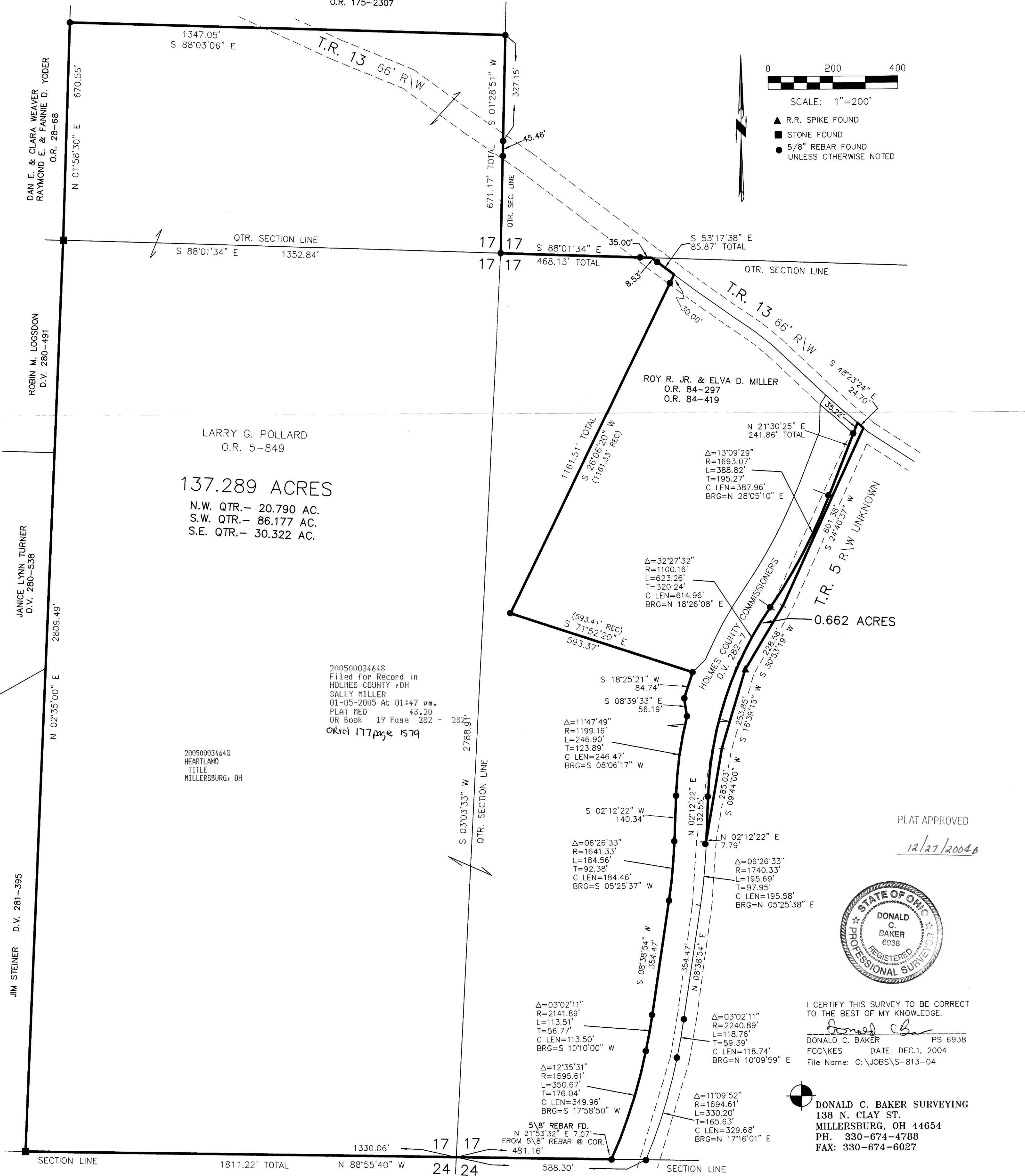
DEED VOL. 282 PAGE 7
 O.R. VOL. 5 PAGE 849
 PLAT VOL. 15 PAGE 159
 PLAT VOL. 18 PAGE 45
 PLAT VOL. 11 PAGE 190
 PLAT VOL. 19 PAGE 143
 PLAT VOL. 16 PAGE 566
 PLAT VOL. 17 PAGE 34

BEARINGS FROM PLAT VOL. 15 PAGE 159

RICHLAND TOWNSHIP
 N.W., S.W. & S.E. QTRS. SECTION 17
 T-8 N; R-9 W
 HOLMES COUNTY, OHIO

DAVID H. YODER
 MOSE J. MULLET
 O.R. 175-2307

SURVEYED FOR: LARRY G. POLLARD



LARRY G. POLLARD
 O.R. 5-849
 137.289 ACRES
 N.W. QTR.- 20.790 AC.
 S.W. QTR.- 86.177 AC.
 S.E. QTR.- 30.322 AC.

ROY R. JR. & ELVA D. MILLER
 O.R. 84-297
 O.R. 84-419

200500034648
 Filed for Record in
 HOLMES COUNTY, OH
 SALLY MILLER
 01-05-2005 A6 01:47 PM
 PLAT MED 43.20
 DR Book 19 Page 282 - 283
 OK vol 177 page 1579

200500034648
 HEARTLAND
 TITLE
 MILLERSBURG, OH

PLAT APPROVED
 12/27/2004



I CERTIFY THIS SURVEY TO BE CORRECT
 TO THE BEST OF MY KNOWLEDGE.
 Donald C. Baker
 DONALD C. BAKER PS 6938
 FCC/VES DATE: DEC.1, 2004
 File Name: C:\JOBS\S-813-04

DONALD C. BAKER SURVEYING
 138 N. CLAY ST.
 MILLERSBURG, OH 44654
 PH. 330-674-4788
 FAX: 330-674-6027