

VILLAGE OF MILLERSBURG
HARDY TOWNSHIP
S.E. QTR. SECTION 19
T-9 N; R-7 W
HOLMES COUNTY, OHIO

SURVEYED FOR: GANT REALTY

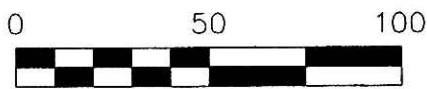
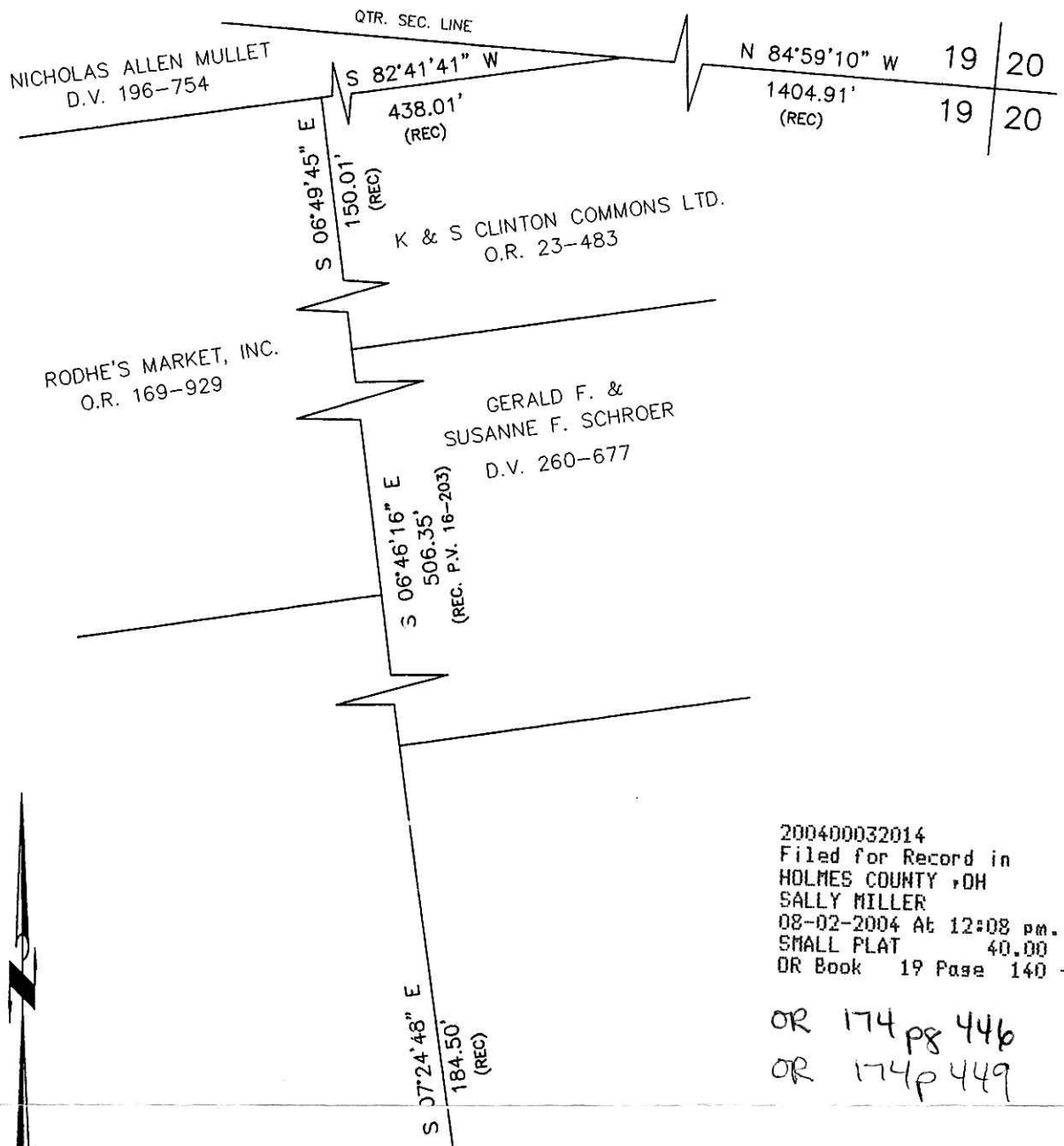
REFERENCES:

DEED VOL. 266 PAGE 873
DEED VOL. 274 PAGES 782 & 929

O.R. VOL. 47 PAGE 396
O.R. VOL. 132 PAGE 595

PLAT VOL. 2 PAGE 245
PLAT VOL. 14 PAGE 698
PLAT VOL. 15 PAGE 102
PLAT VOL. 16 PAGE 203
PLAT VOL. 17 PAGE 392

BEARINGS FROM PLAT VOL. 16 PAGE 203



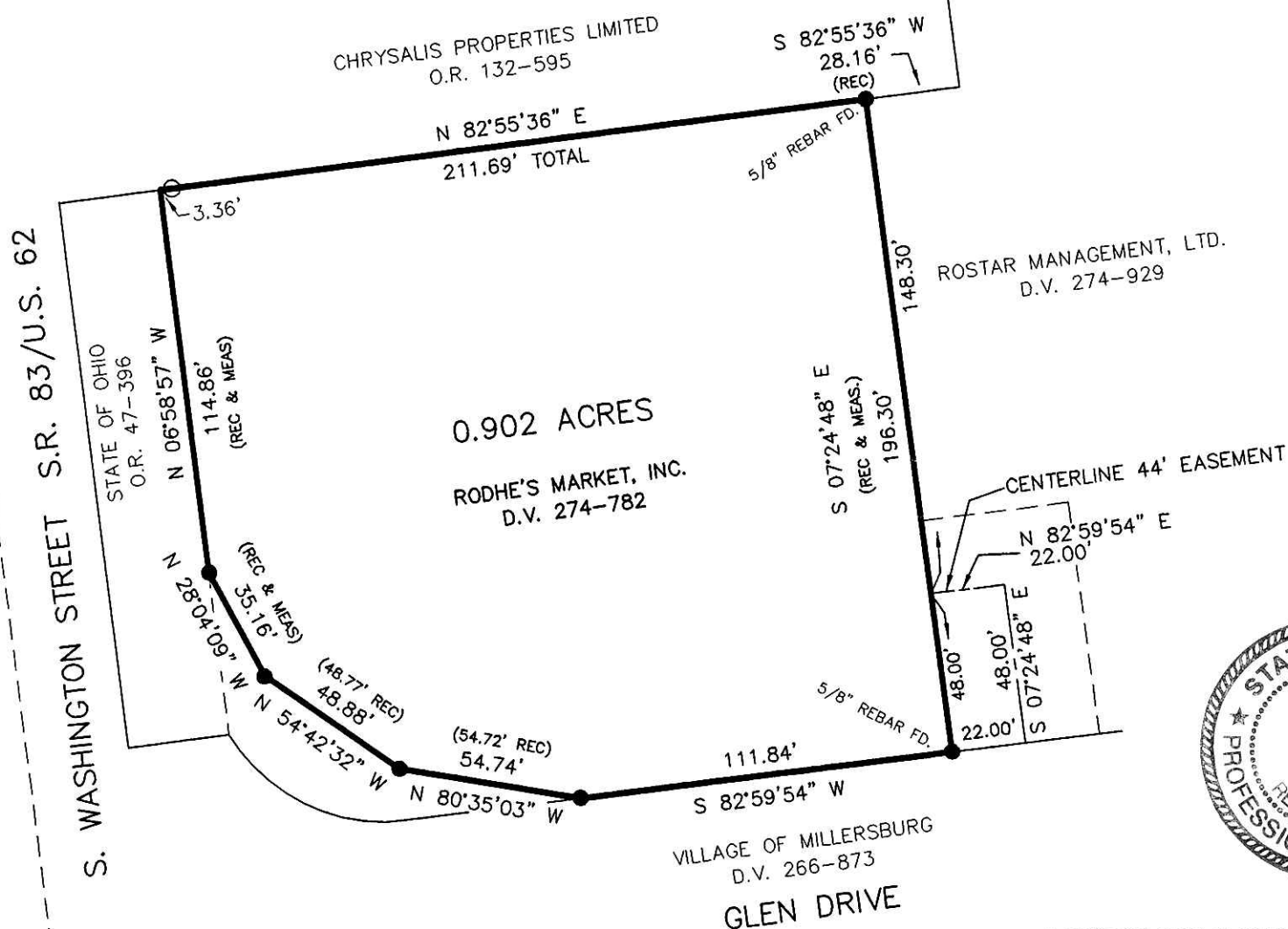
SCALE: 1"=50'

- 5/8" REBAR W/ ALUMINUM CAP FOUND UNLESS OTHERWISE NOTED
- 5/8" REBAR WITH I.D. CAP SET I.D. CAP MARKED "BAKER 6938"

200400032014
Filed for Record in
HOLMES COUNTY, OH
SALLY MILLER
08-02-2004 At 12:08 pm.
SMALL PLAT 40.00
OR Book 19 Page 140 - 140

OR 174 pg 446
OR 174p 449

200400032014
HEARTLAND
TITLE
MILLERSBURG, OH



PLAT APPROVED

7/26/2004



I CERTIFY THIS SURVEY TO BE CORRECT TO THE BEST OF MY KNOWLEDGE.

Donald C Baker
DONALD C. BAKER PS 6938

DATE: JAN 7, 2004
REVISED: JUNE 22, 2004

KES\ERZ
File Name: C:\WORK\S-1043A-03
S-497-04



DONALD C. BAKER SURVEYING
138 N. CLAY ST.
MILLERSBURG, OH 44654
PH. 330-674-4788
FAX: 330-674-6027