

SURVEY FOR GALION DUMP BODIES OF A 20.038 ACRE TRACT PT. OF LOT 12, 4TH. QTR. TOWNSHIP 10, RANGE 5 HOLMES COUNTY, OHIO PAINT TWP.

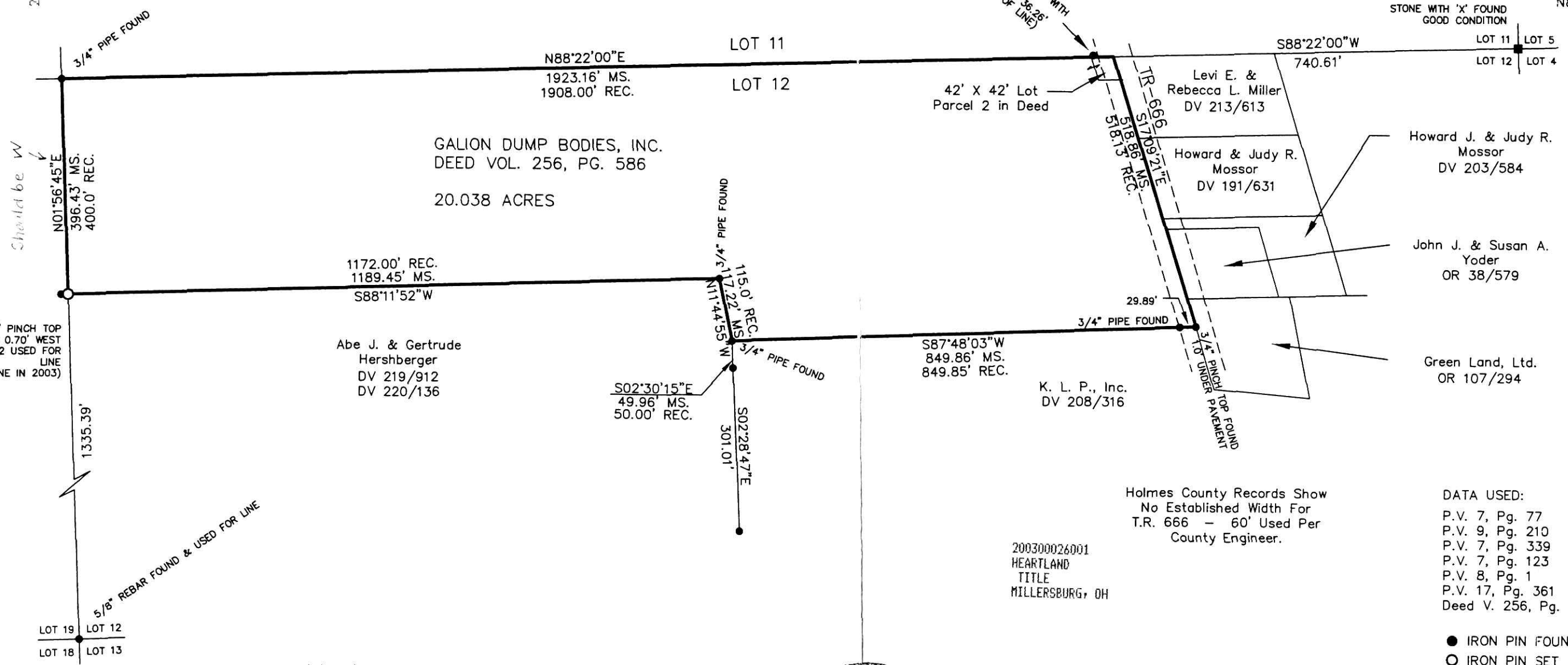
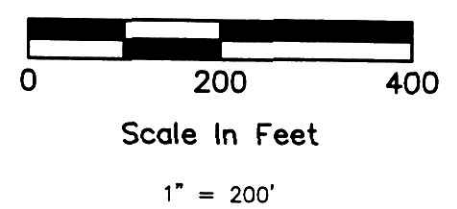
200300026001
Filed for Record in
HOLMES COUNTY, OH
SALLY MILLER
09-10-2003 At 03:13 p.m.
SMALL PLAT 40.00
OR Book 18 Page 727 - 727
OR Vol 164 page 74

INDEXED



BASIS OF BEARING IS N88°22'E, THE NORTHERLY LINE OF LOT 12 PER PLAT VOL. 7, PG. 77.

Instrument Book Page
200300026001 OR 18 727



I hereby certify that this is a true delineation of a survey of all lands described in Deed Vol. 256 Page 589 made in September 1992 and revised in August 2003 by ENGINEERING ASSOCIATES, INC., of Wooster, Ohio.

William H. Long 8/20/03
William H. Long, P.S. #6505 Date



200300026001
HEARTLAND
TITLE
MILLERSBURG, OH

PLAT APPROVED

9/8/2003

Holmes County Records Show No Established Width For T.R. 666 - 60' Used Per County Engineer.

- DATA USED:
- P.V. 7, Pg. 77
 - P.V. 9, Pg. 210
 - P.V. 7, Pg. 339
 - P.V. 7, Pg. 123
 - P.V. 8, Pg. 1
 - P.V. 17, Pg. 361
 - Deed V. 256, Pg. 587

- IRON PIN FOUND
- IRON PIN SET

PREPARED BY
ENGINEERING ASSOCIATES, INC.
1935 EAGLE PASS - WOOSTER, OHIO 44691
TELEPHONE : (330) 345-6556