

HEARTLAND SURVEYING, INC

Jim Shamp
 5210 T.R. 257 MILLERSBURG, OH 44654
 PH: 330-674-4698

I CERTIFY THIS PLAT & SURVEY TO BE CORRECT TO THE BEST OF MY KNOWLEDGE:

Jim Shamp
 JIM SHAMP, REG. SUR. NO. S-6088

AUGUST 22, 2003

DATE

I.P. FD. N 79°30'56"E
 0.90' FROM CALC. PROP. COR.

HOLMES COUNTY COMMISSIONERS
 D.V. 282/7

JOHN D. HIPPI, ET AL
 O.R. 23/394

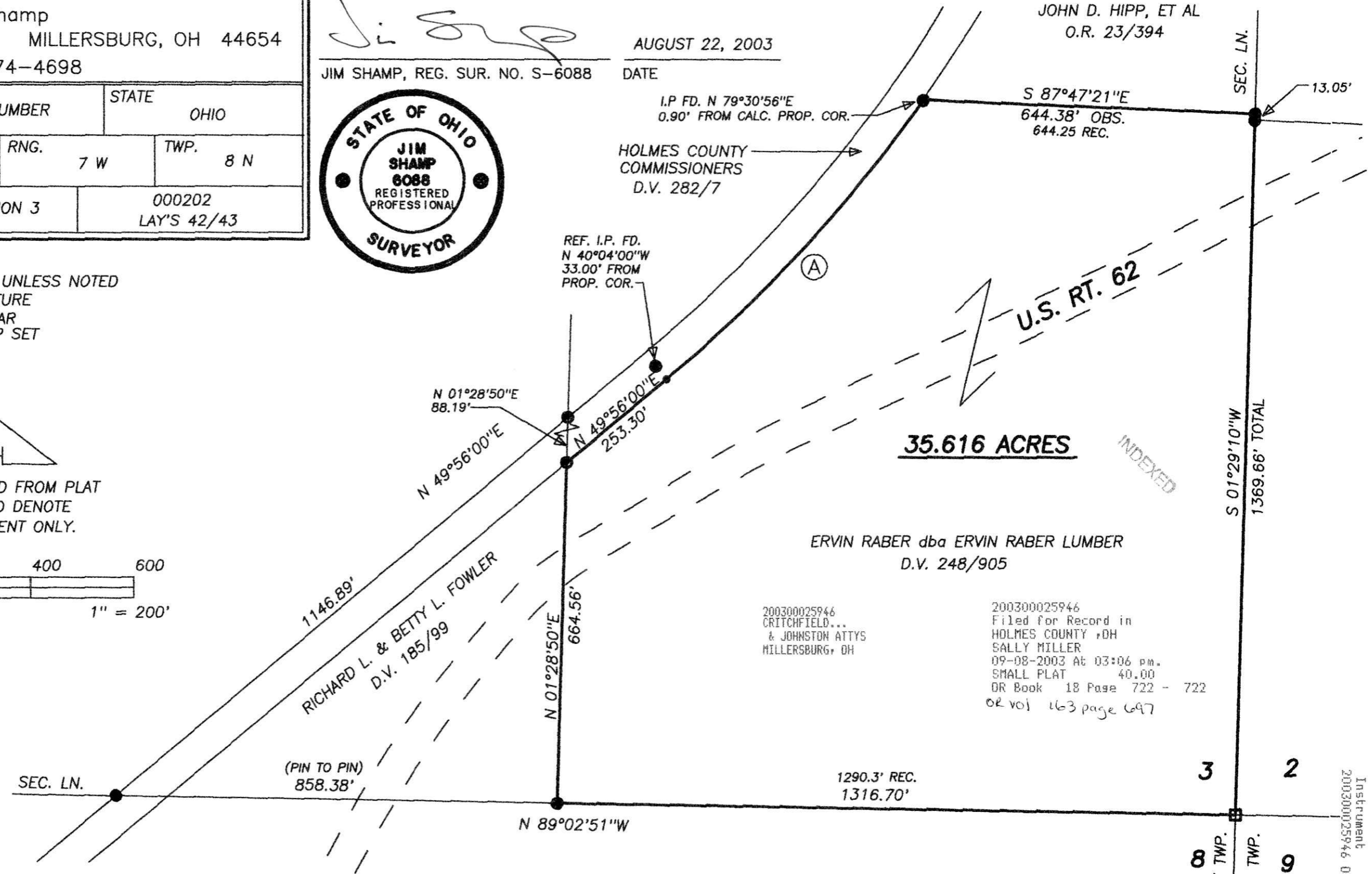
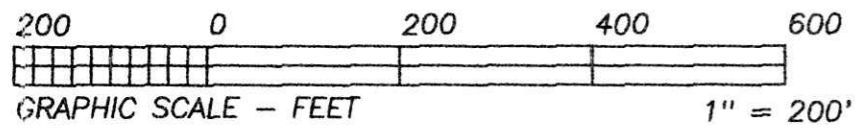
SURVEY		STATE	
ERVIN RABER dba RABER LUMBER		OHIO	
COUNTY	TWP.	RNG.	TWP.
HOLMES	KILLBUCK	7 W	8 N
SOUTHEAST QUARTER OF SECTION 3		000202 LAY'S 42/43	



- LEGEND:
- = STONE FD.
 - = 5/8" RE-BAR FD. UNLESS NOTED
 - = POINT-OF-DEPARTURE
 - = 5/8" X 30" RE-BAR W/PLASTIC I.D. CAP SET
 - ⊗ = R/R SPIKE SET
 - △ = R/R SPIKE FD.



BEARINGS ESTABLISHED FROM PLAT 15/156 AND ARE TO DENOTE ANGULAR MEASUREMENT ONLY.



PLAT APPROVED

9/8/2003 *DB*

REFERENCE DOCUMENTS:
 TAX MAPS
 DEEDS AS SHOWN
 SURVEY PLATS: 5/28, 9/81, 15/156, 16/850

CURVE	RADIUS	TANGENT	LENGTH	DELTA	DEGREE	CHORD	CH. BEARING
A	2805.57'	371.98'	739.65'	15°06'19"	2°02'32"	737.51'	N 42°22'51"E

200300025946
 CRITCHFIELD...
 & JOHNSTON ATTYS
 MILLERSBURG, OH

200300025946
 Filed for Record in
 HOLMES COUNTY, OH
 SALLY MILLER
 09-08-2003 At 03:06 pm.
 SMALL PLAT 40.00
 OR Book 18 Page 722 - 722
 OR Vol 163 page 697

Instrument
 200300025946 OR 18 722
 Book Page