

Scale 1" = 300'

- STONE FOUND
- 5/8" REBAR FOUND UNLESS OTHERWISE NOTED
- 5/8" REBAR WITH I.D. CAP SET I.D. CAP MARKED "BAKER 6938"

CLARK TOWNSHIP
 N.E. QTR. SECTION 16
 T-8 N; R-5 W
 HOLMES COUNTY, OHIO
 SURVEYED FOR: DELBERT J. ERB

VOL 18 PAGE 583

REFERENCES:

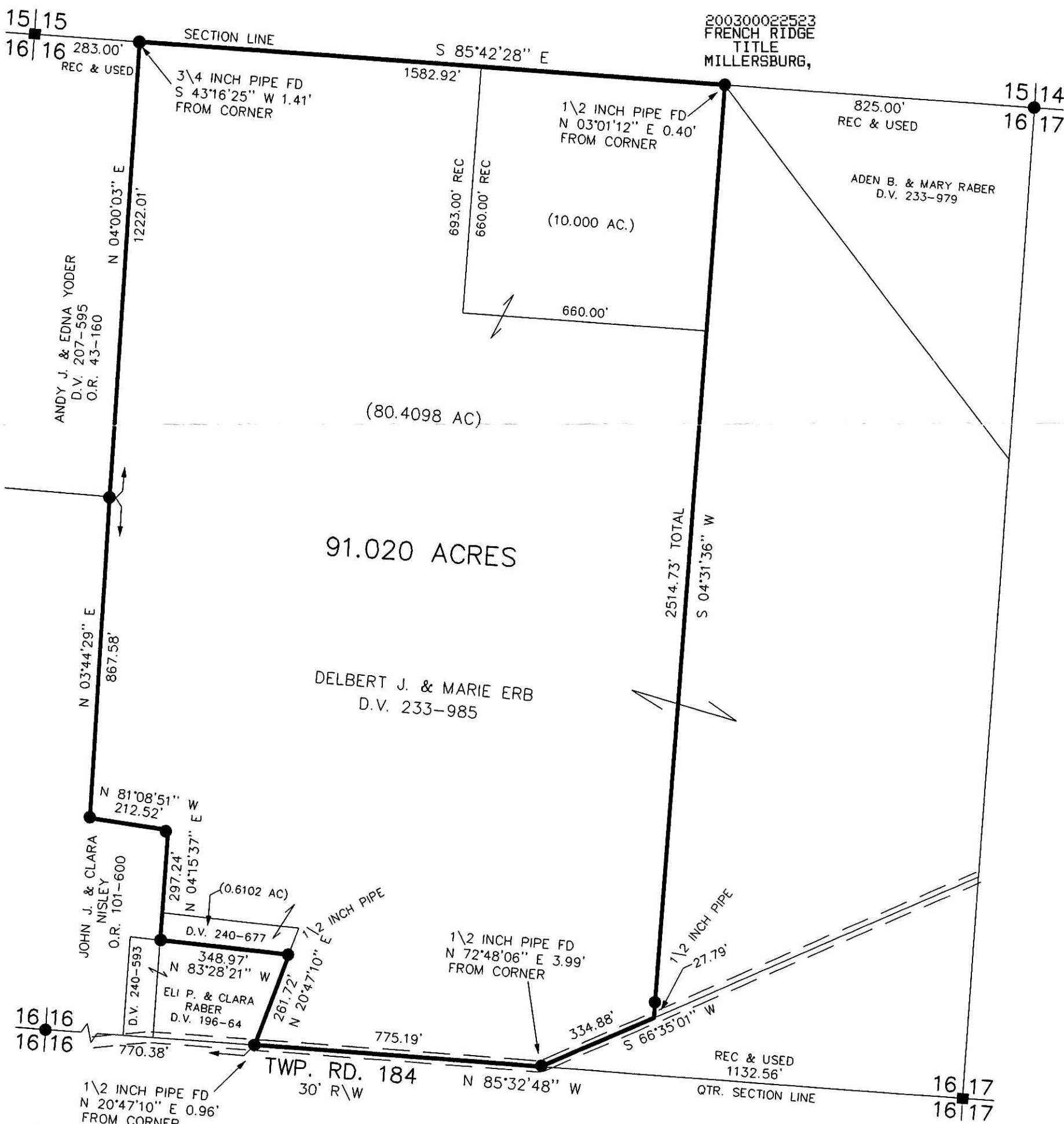
- DEED VOL. 233 PAGE 985
- DEED VOL. 240 PAGE 677
- DEED VOL. 196 PAGE 64
- PLAT VOL. 11 PAGE 128
- PLAT VOL. 18 PAGE 191
- PLAT VOL. 8 PAGE 508
- PLAT VOL. 12 PAGE 79
- PLAT VOL. 4 PAGE 145

BEARINGS FROM PLAT VOL. 18 PAGE 191

200300022523
 Filed for Record in
 HOLMES COUNTY, OH
 SALLY MILLER
 04-09-2003 11:45 am.
 SMALL PLAT 20.00
 OR Book 18 Page 583 - 583

INDEXED

OR 144 pg 897



PLAT APPROVED

4/8/2003 B



DONALD C. BAKER SURVEYING
 138 N. CLAY ST.
 MILLERSBURG, OHIO 44654
 PH. 330-674-4788
 FAX 330-674-6027



I CERTIFY THIS SURVEY TO BE CORRECT TO THE BEST OF MY KNOWLEDGE.

Donald C. Baker P.S. 6938

DATE: JAN. 28, 2003 FCC/FDB