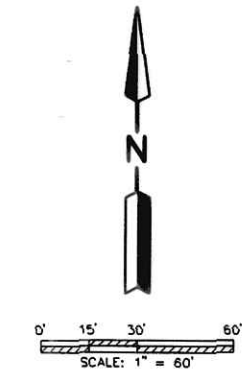
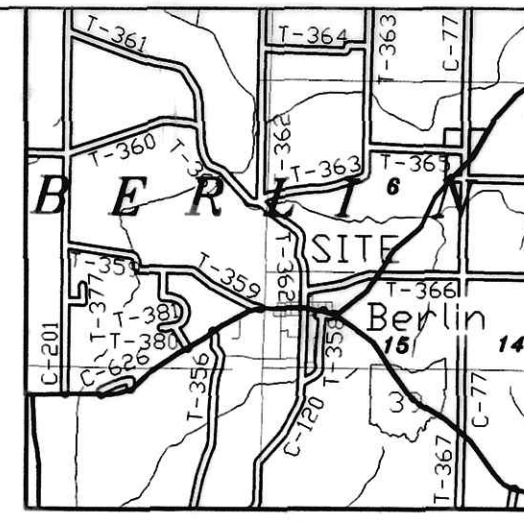


PICKET PLACE CONDOMINIUMS

PHASE 4
PART OF THE
S.W. QTR. OF SEC. 6 &
T-9N: R-5W
BERLIN TOWNSHIP
HOLMES COUNTY, OHIO

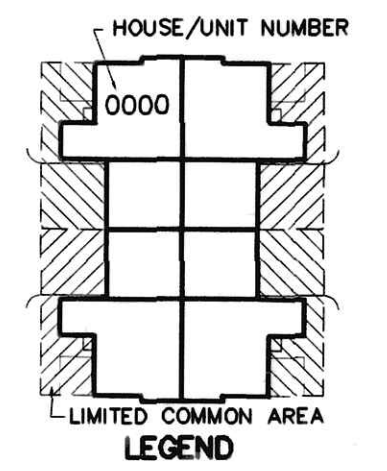


- ▲ R.R. SPIKE FOUND
- I.P. OR PIPE FOUND
- 5/8" REBAR SET WITH I.D. CAP MARKED SJL INC

200300021256
Filed for Record in
HOLMES COUNTY, OH
SALLY MILLER
02-13-2003 09:04 am.
PLAT MED 21.60
DR Book 18 Page 520 - 520

PHASE 4 UNITS

| UNIT | PLAN | LIVING | BASEM'T | GARAGE | TOTALS |
|------|-------------------|-----------|-----------|----------|-----------|
| 231 | Candleberry Base. | 1258 S.F. | 1258 S.F. | 437 S.F. | 2953 S.F. |
| 232 | Baycrest Slab | 1258 S.F. | NONE | 437 S.F. | 1695 S.F. |
| 233 | Candleberry Slab | 1258 S.F. | NONE | 437 S.F. | 1695 S.F. |
| 234 | Candleberry Base. | 1258 S.F. | 1258 S.F. | 437 S.F. | 2953 S.F. |
| 241 | Candleberry Base. | 1258 S.F. | 1258 S.F. | 437 S.F. | 2953 S.F. |
| 242 | Baycrest Slab | 1258 S.F. | NONE | 437 S.F. | 1695 S.F. |
| 243 | Candleberry Slab | 1258 S.F. | NONE | 437 S.F. | 1695 S.F. |
| 244 | Candleberry Base. | 1258 S.F. | 1258 S.F. | 437 S.F. | 2953 S.F. |
| 221 | Candleberry Base. | 1258 S.F. | 1258 S.F. | 437 S.F. | 2953 S.F. |
| 222 | Candleberry Slab | 1258 S.F. | NONE | 437 S.F. | 1695 S.F. |
| 223 | Candleberry Slab | 1258 S.F. | NONE | 437 S.F. | 1695 S.F. |
| 224 | Baycrest Base. | 1258 S.F. | 1258 S.F. | 437 S.F. | 2953 S.F. |



200300021256
WAYNE CTY
TITLE
WOOSTER, OH

TOTAL = 10.427 AC.
PHASE 1 = 1.920 AC.
PHASE 2 = 1.191 AC.
PHASE 3 = 1.615 AC.
PHASE 4 = 1.580 AC.
FUTURE PHASES = 4.121 AC.



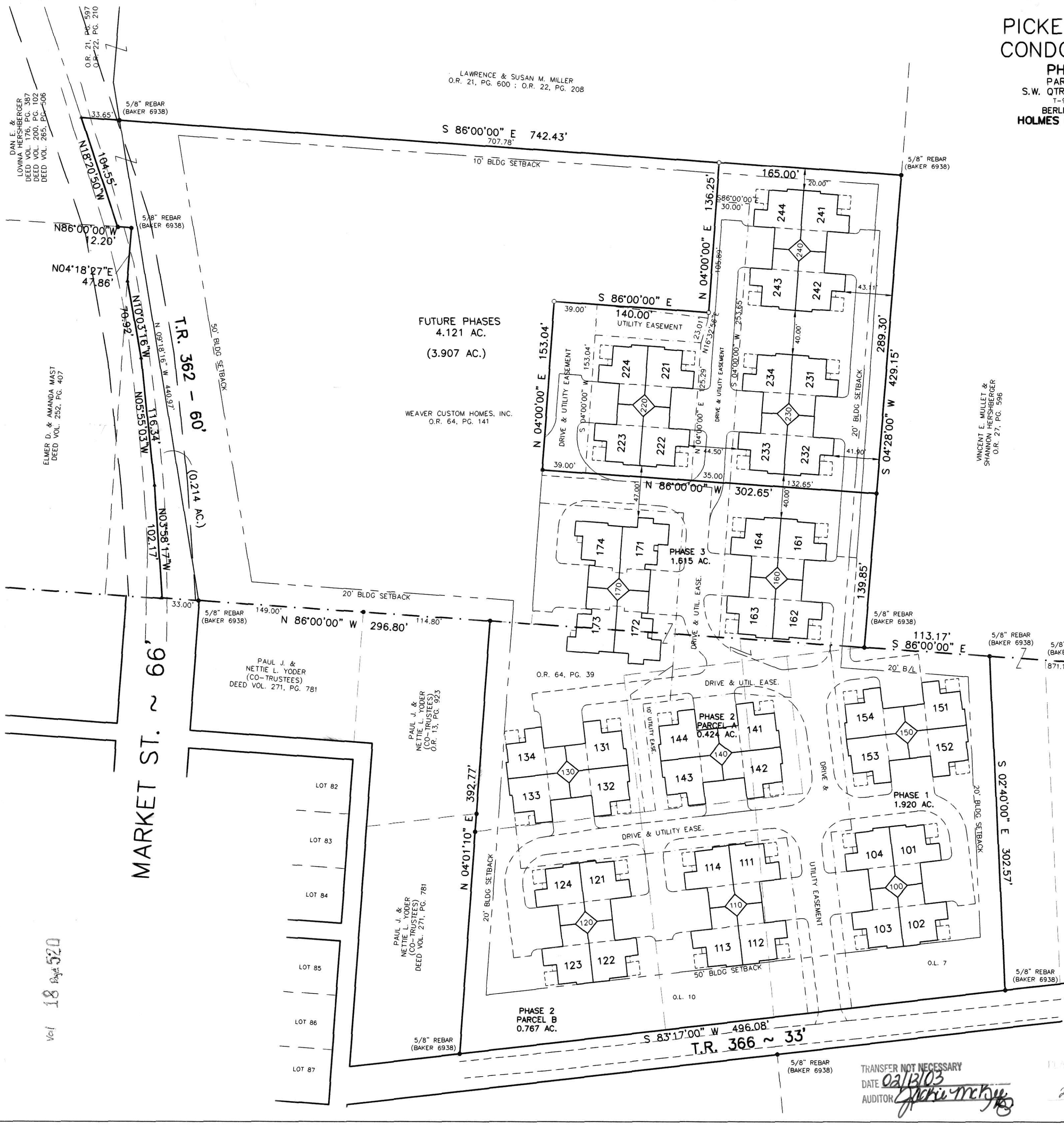
I, Virgil D. Landis, as a Registered Professional Engineer and Surveyor for Shaffer, Johnston, Lichtenwalter & Associates, Inc., do hereby certify that these drawings accurately show the particulars of the land, the buildings and other improvements as constructed thereon including the layout, location and dimensions of common and limited common areas and facilities and location and dimensions of all apparent easements.

By: *Virgil D. Landis* 1-14-03
Virgil D. Landis P.S. #6551 Date
(My ORIGINAL Signature in GREEN INK)

SHAFFER, JOHNSTON, LICHTENWALTER & ASSOCIATES, INC.
CONSULTING ENGINEERS - SURVEYORS
3477 Commerce Parkway, Suite C
Wooster, Ohio 44691
TEL (330) 345-6377 FAX (330) 345-6725 EMAIL: sjinfo@earthlink.net

| | | | |
|------------------|----------------------|-------------------|------------------|
| DRAWN C. Falb | CHECKED V. Landis | 1" SCALE = 60' | DATE 01/13/03 |
|------------------|----------------------|-------------------|------------------|

DWG. No. EW-2116D JOB No. EW-2116D EXHIBIT A



TRANSFER NOT NECESSARY
DATE 02/13/03
AUDITOR *Jeri McK...*

PLAT APPROVED
2/10/03 *sz*

Vol 18 Page 520