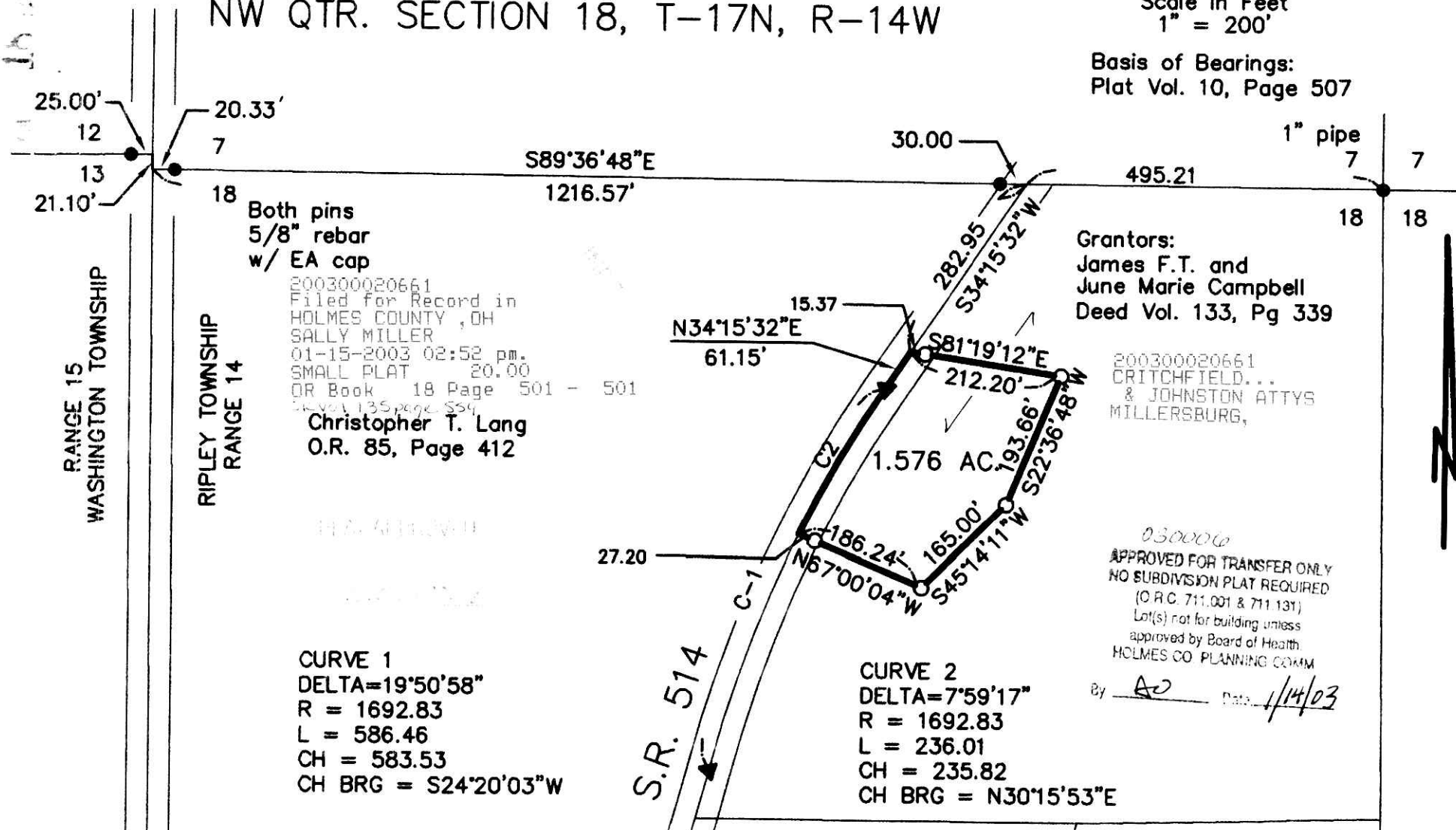


RIPLEY TOWNSHIP
 HOLMES COUNTY, OHIO
 NW QTR. SECTION 18, T-17N, R-14W



Scale In Feet
 1" = 200'

Basis of Bearings:
 Plat Vol. 10, Page 507



Both pins
 5/8" rebar
 w/ EA cap

200300020661
 Filed for Record in
 HOLMES COUNTY, OH
 SALLY MILLER
 01-15-2003 02:52 pm.
 SMALL PLAT 20.00
 OR Book 18 Page 501 - 501
 Deed Vol. 133, page 339

Christopher T. Lang
 O.R. 85, Page 412

Grantors:
 James F.T. and
 June Marie Campbell
 Deed Vol. 133, Pg 339

200300020661
 CRITCHFIELD...
 & JOHNSTON ATTYS
 MILLERSBURG,

CURVE 1
 DELTA=19°50'58"
 R = 1692.83
 L = 586.46
 CH = 583.53
 CH BRG = S24°20'03"W

CURVE 2
 DELTA=7°59'17"
 R = 1692.83
 L = 236.01
 CH = 235.82
 CH BRG = N30°15'53"E

030006
 APPROVED FOR TRANSFER ONLY
 NO SUBDIVISION PLAT REQUIRED
 (O.R.C. 711.001 & 711.131)
 Lot(s) not for building unless
 approved by Board of Health
 HOLMES CO. PLANNING COMM
 By AL Date 1/14/03

- References:
- I. P. Found Plat Vol 10, Pg 507
 - I. P. Set 5/8" Rebar w/ Cap marked "ENGINEERING ASSOCIATES, INC." Plat Vol 14, Pg 119
 - ▲ RR Spike Found Plat Vol 14, Pg 528
 - Plat Vol 7, Pg 554
 - Plat Vol 18, Pg 54

I hereby certify that this is a true delineation of a survey made by ENGINEERING ASSOCIATES INC. of Wooster, Ohio.

William H Long Jan. 6, 2003
 William H. Long, P.S. #6505 Date



16-501

RANGE 15
 WASHINGTON TOWNSHIP

RIPLEY TOWNSHIP
 RANGE 14