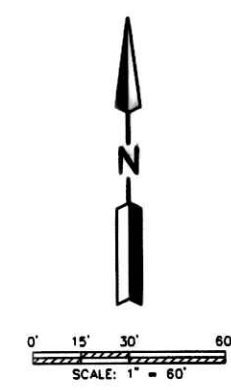
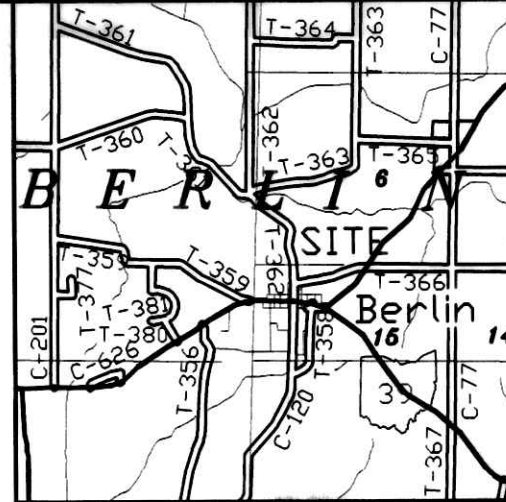


PICKET PLACE CONDOMINIUMS
PHASE 2
 PARTS OF O.L. 7 & O.L. 10
 VILLAGE OF BERLIN
 N.W. QTR. OF SEC. 15
 T-9N; R-5W
 BERLIN TOWNSHIP
 HOLMES COUNTY, OHIO



▲ R.R. SPIKE FOUND
 ● I.P. OR PIPE FOUND
 ○ 5/8" REBAR SET WITH I.D. CAP MARKED SJL INC

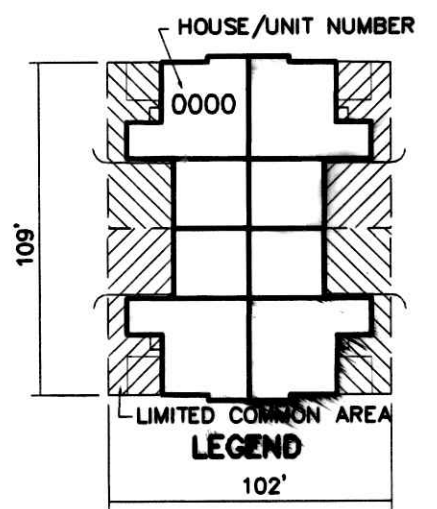
200200015898
 Filed for Record in
 HOLMES COUNTY, OH
 SALLY MILLER
 05-10-2002 03:46 PM.
 PLAT MED 21.60
 OR Book 18 Page 284 - 284
 CR vol 112 pg 488

PHASE 2 UNITS

UNIT	PLAN	LIVING	BASEM'T	GARAGE	TOTALS
141	SLAB	1258 S.F.	NONE	437 S.F.	1695 S.F.
142	SLAB	1258 S.F.	NONE	437 S.F.	1695 S.F.
143	SLAB	1258 S.F.	NONE	437 S.F.	1695 S.F.
144	SLAB	1258 S.F.	NONE	437 S.F.	1695 S.F.
121	SLAB	1258 S.F.	NONE	437 S.F.	1695 S.F.
122	BASE.	1258 S.F.	1258 S.F.	437 S.F.	2953 S.F.
123	BASE.	1258 S.F.	1258 S.F.	437 S.F.	2953 S.F.
124	SLAB	1258 S.F.	NONE	437 S.F.	1695 S.F.

200200015898
 JOHN T.
 KEATING ATTY
 WOOSTER, OH

TRANSFER NOT NECESSARY
 DATE May 10, 2002
 AUDITOR Gladie Pickel, PT



TOTAL = 10.427 AC.
 PHASE 1 = 1.920 AC.
 PHASE 2 = 1.191 AC.
 FUTURE PHASES = 7.316 AC.



I, Virgil D. Landis, as a Registered Professional Engineer and Surveyor for Shaffer, Johnston, Lichtenwalter & Associates, Inc., do hereby certify that these drawings accurately show the particulars of the land, the buildings and other improvements as constructed thereon including the layout, location and dimensions of common and limited common areas and facilities and location and dimensions of all apparent easements.

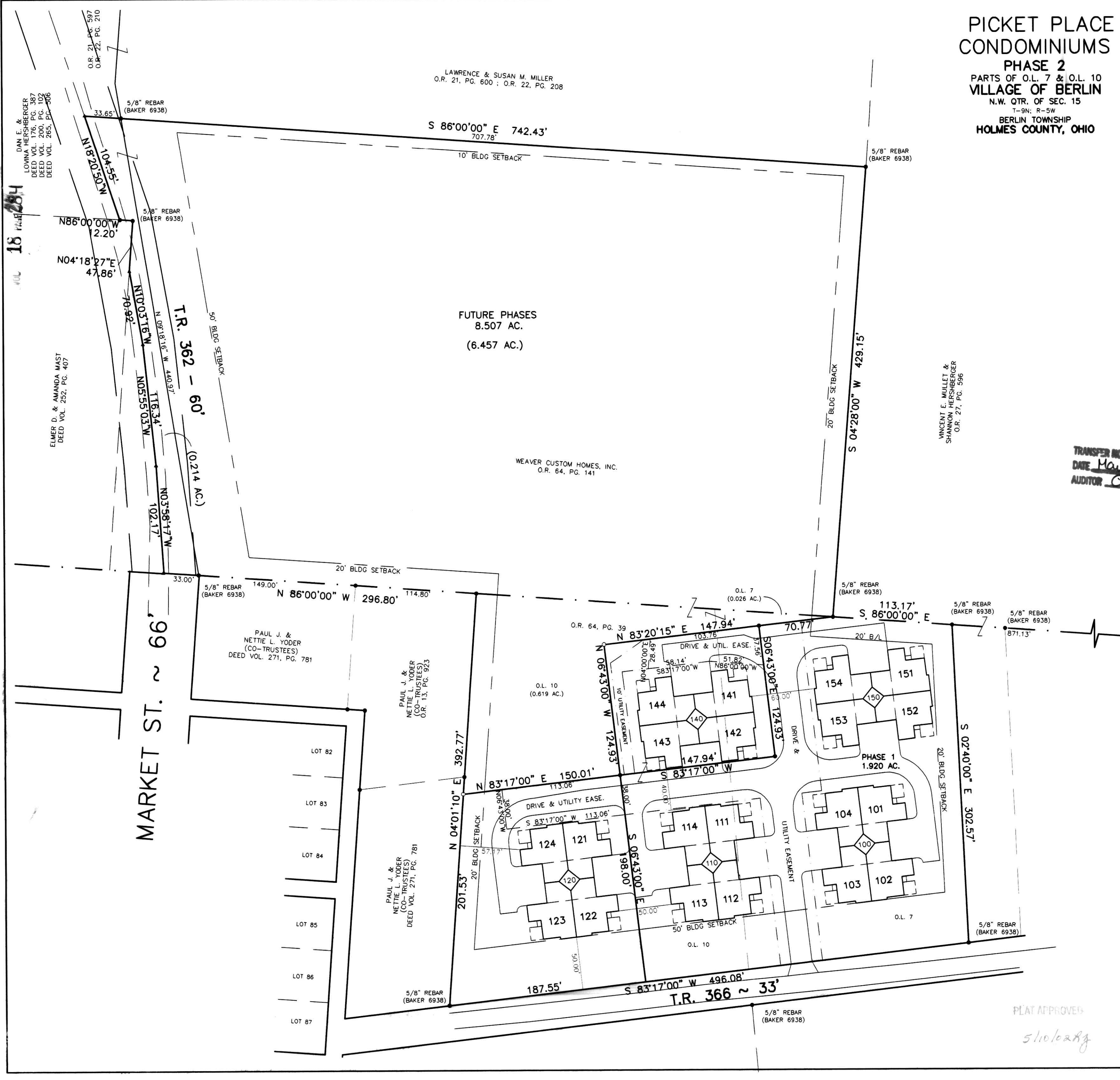
Virgil D. Landis
 Virgil D. Landis, P.E. #40763, P.S. #6551

SHAFFER, JOHNSTON, LICHTENWALTER & ASSOCIATES, INC.
 CONSULTING ENGINEERS - SURVEYORS
 3477 Commerce Parkway, Suite C
 Wooster, Ohio 44691

TEL (330) 345-6377 FAX (330) 345-6725 EMAIL: VLATSJL@aol.com

DRAWN C. Cunningham CHECKED V. Landis 1" SCALE 60' DATE 02/22/02

DWG. No. EW-2116B JOB No. EW-2116B EXHIBIT A



PLAT APPROVED

5/10/02

INDEXED