

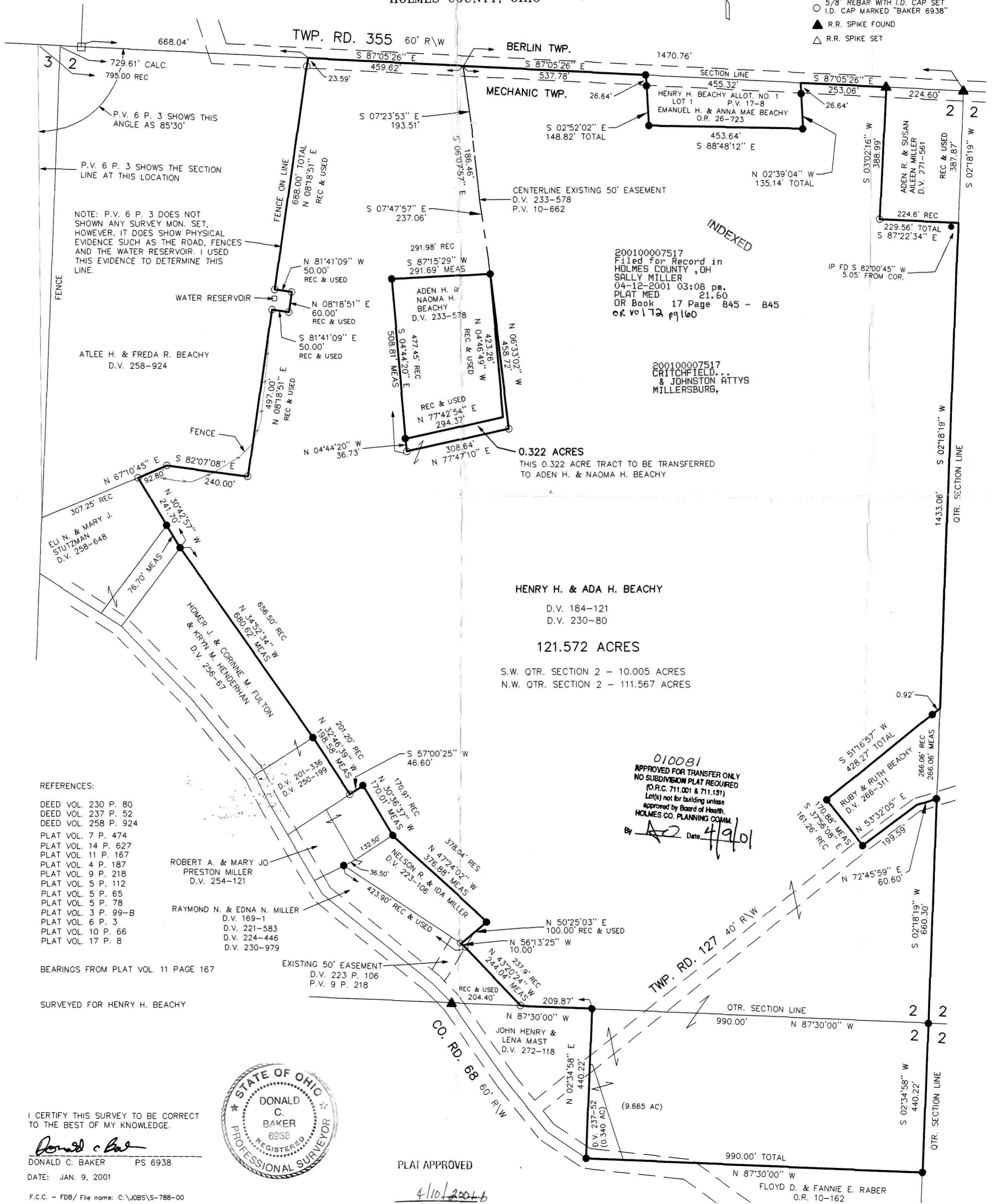
Scale 1" = 200'



DONALD C. BAKER SURVEYING
138 N. CLAY ST.
MILLERSBURG, OHIO 44654
PH. 330-674-4788
FAX 330-674-6027

MECHANIC TOWNSHIP
N.W. & S.W. QTRS. SECTION 2
T-8 N; R-6 W
HOLMES COUNTY, OHIO

- STONE FOUND
- IRON PIN FOUND
- 5/8" REBAR WITH I.D. CAP SET
I.D. CAP MARKED "BAKER 6938"
- ▲ R.R. SPIKE FOUND
- △ R.R. SPIKE SET



NOTE: P.V. 6 P. 3 DOES NOT SHOWN ANY SURVEY MON. SET, HOWEVER, IT DOES SHOW PHYSICAL EVIDENCE SUCH AS THE ROAD, FENCES AND THE WATER RESERVOIR. I USED THIS EVIDENCE TO DETERMINE THIS LINE.

200100007517
Filed for Record in
HOLMES COUNTY, OH
SALLY MILLER
04-12-2001 03:08 pm.
PLAT MED 21.60
OR Book 17 Page 845 - 845
OK Vol 17 p 160

200100007517
CRITCHFIELD...
& JOHNSTON ATTYS
MILLERSBURG,

HENRY H. & ADA H. BEACHY
D.V. 184-121
D.V. 230-80

121.572 ACRES

S.W. QTR. SECTION 2 - 10.005 ACRES
N.W. QTR. SECTION 2 - 111.567 ACRES

010081
APPROVED FOR TRANSFER ONLY
NO SUBDIVISION PLAT REQUIRED
(O.R.C. 711.001 & 711.131)
Lot(s) not for building unless
approved by Board of Health.
HOLMES CO. PLANNING COMM.
By *[Signature]* Date 4/9/01

- REFERENCES:
- DEED VOL. 230 P. 80
 - DEED VOL. 237 P. 52
 - DEED VOL. 258 P. 924
 - PLAT VOL. 7 P. 474
 - PLAT VOL. 14 P. 627
 - PLAT VOL. 11 P. 167
 - PLAT VOL. 4 P. 187
 - PLAT VOL. 9 P. 218
 - PLAT VOL. 5 P. 112
 - PLAT VOL. 5 P. 65
 - PLAT VOL. 5 P. 78
 - PLAT VOL. 3 P. 99-B
 - PLAT VOL. 6 P. 3
 - PLAT VOL. 10 P. 66
 - PLAT VOL. 17 P. 8

BEARINGS FROM PLAT VOL. 11 PAGE 167
SURVEYED FOR HENRY H. BEACHY



I CERTIFY THIS SURVEY TO BE CORRECT TO THE BEST OF MY KNOWLEDGE.
[Signature]
DONALD C. BAKER PS 6938
DATE: JAN. 9, 2001

PLAT APPROVED
4/10/2001