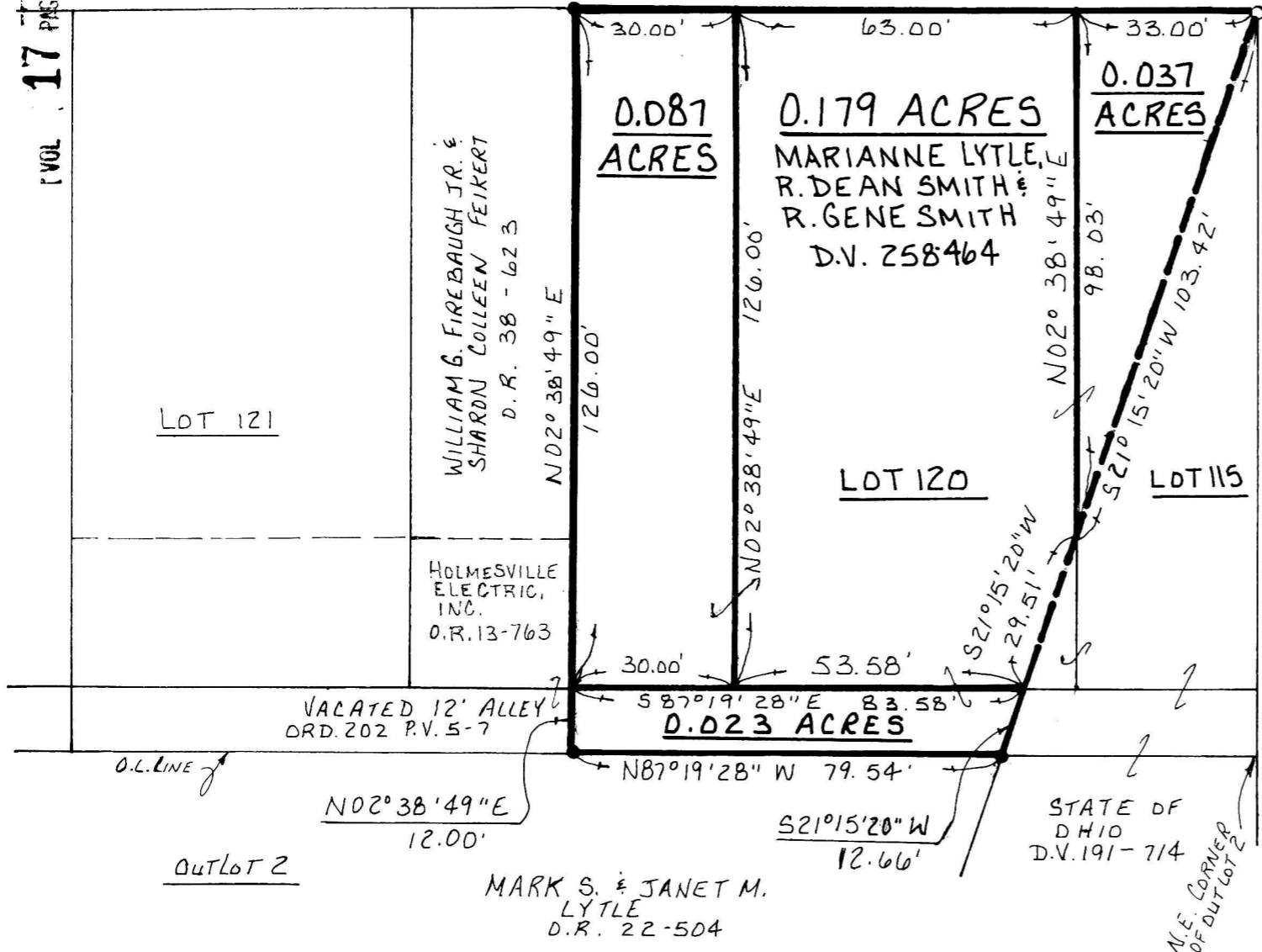


PRAIRIE Twp. - T-13N; R-13W
S.W. QTR. SECTION 3

VOL 17 PAGE 328

MAIN STREET 66'

S 87° 19' 28" E



REFERENCES:

DEED VOL. 258 PAGE 464
" " 191 " 714
PLAT VOL. 5 PAGE 7
OFFICIAL RECORD VOL. 38
PAGE 623
OFFICIAL RECORD VOL. 22
PAGE 504

VILLAGE OF HOLMESVILLE
PART OF LOTS 115 & 120
PART OF VACATED STREET &
PART OF VACATED 12' ALLEY
HOLMES COUNTY, OHIO

(SURVEYED FOR MARK & JANET LYTLE)

INDEXED

199900005943
Filed for Record in
HOLMES COUNTY, OH
SALLY MILLER
On 12-13-1999 At 03:13 pm.
SMALL PLAT 20.00
OR Book 17 Page 328 -
or vol 43 pg 708



199900005943
APPROVED
TITLE
N CANTON, OH

I CERTIFY THIS SURVEY TO BE CORRECT
TO THE BEST OF MY KNOWLEDGE.

J. D. Darr
JAMIE D. DARR P.S. 7755
DONALD C. BAKER SURVEYING
138 N. CLAY ST.
MILLERSBURG, OHIO 44654
PH: (330) 674-4788

S.R. 83

PLAT APPROVED

12/19/99 *RD*

DECEMBER 2, 1999 # 82199-FJM
F.C.C.-J.D. DARR