

**HOLMES COUNTY, OHIO
SALT CREEK TOWNSHIP
SEC. 9, T 14 N, R 12 W OF THE CONGRESS LANDS
LOT 5 OF THE 4th QTR., TWP. 10, R 6 OF THE
UNITED STATES MILITARY DISTRICT**

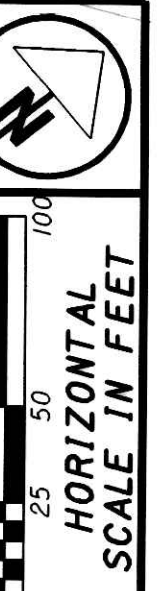
Parcel No. 1-WD - Gross Take
0.249 Ac. from Auditor's No. 34-60024 (0.723 Ac.) (Lot 5)
0.046 Ac. from 1.0 Ac. Tract, No Auditor's Number (Lot 5)
0.018 Ac. from 2.0 Ac. Tract, No Auditor's Number (Section 9)
0.064 Ac. from Auditor's No. 34-00084 (0.089 Ac.) (calc. 0.112 Ac.) (Section 9)
0.069 Ac. from Auditor's No. 30-00085 (0.076 Ac.) (calc. 0.069 Ac.) (Lot 5)
0.081 Ac. from 0.095 Ac. Tract, No Auditor's Number (Lot 5)

0.527 Ac. Total Area of Take
0.082 Ac. from Section 9
0.445 Ac. from Lot 5

Parcel No. 7-WD - Gross Take
0.391 Ac. from Auditor's No. 34-00605 (Section 9)
0.276 Ac. from Auditor's No. 34-00606 (0.221 Ac.) (calc. 0.276 Ac.) (Lot 5)
0.667 Ac. Total Area of Take

Jacob Edward Mast
and Elsie Mast
3.011 Ac.
Deed Vol. 235, Page 984
34-00209.000

199900004795
Filed for Record in
HOLMES COUNTY, OH
SALLY MILLER
On 10-01-1999 At 11:46 AM.
SMALL PLAT 20.00
OR Book 17 Page 255 - 258



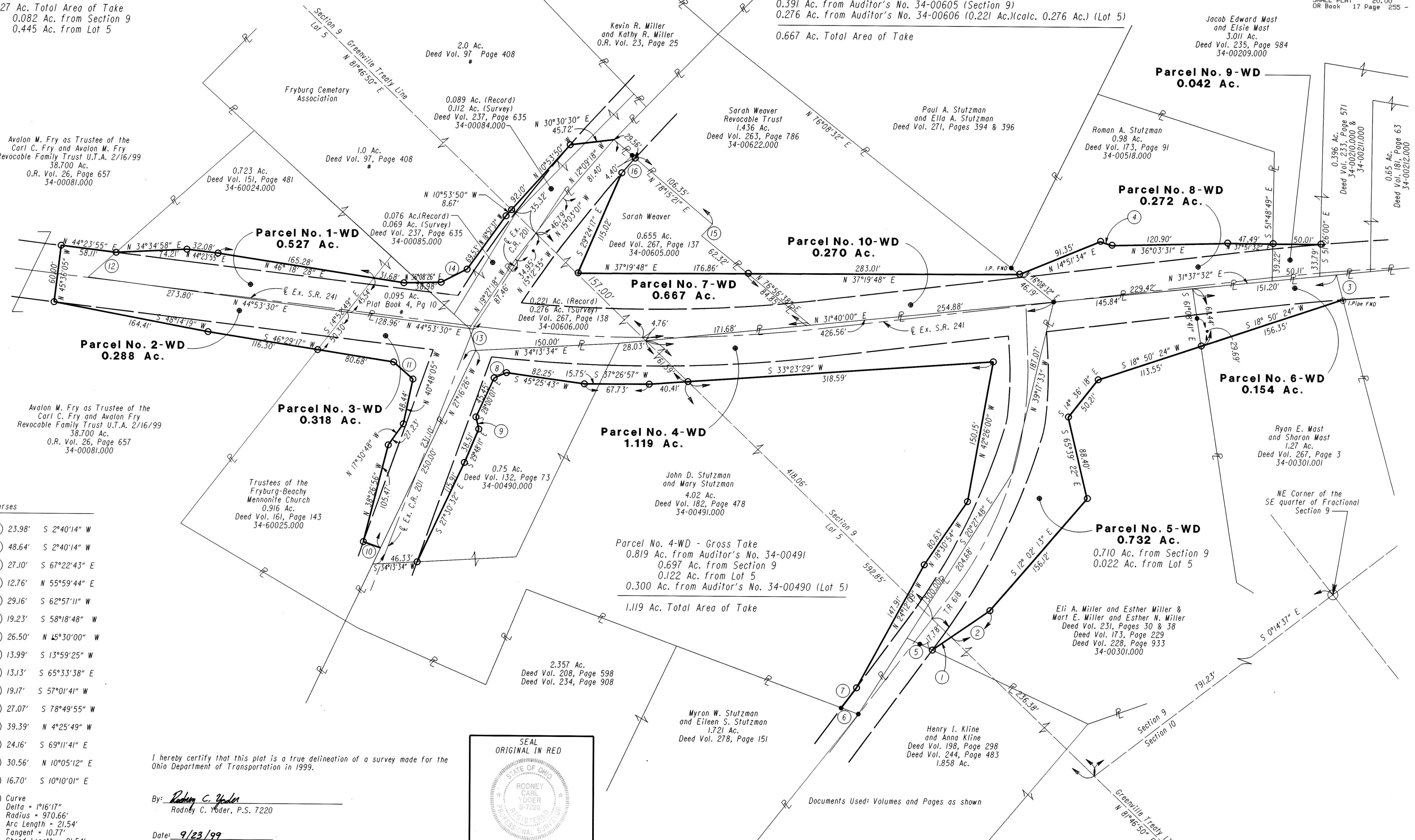
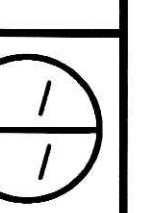
SCALE IN FEET
0 25 50 100
HORIZONTAL

F.I.D. NO. 17642

STATE PROJECT NO. 11454(0)

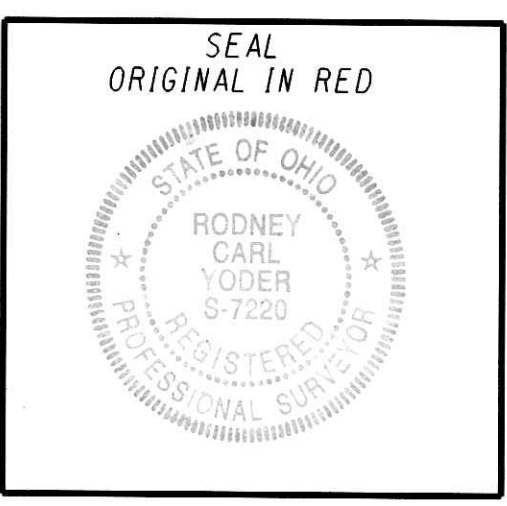
SURVEY PLAT

HOL - 241-10.813



- Courses**
- ① 23.98' S 2°40'14" W
 - ② 48.64' S 2°40'14" W
 - ③ 27.10' S 67°22'43" E
 - ④ 12.76' N 55°59'44" E
 - ⑤ 29.16' S 62°57'11" W
 - ⑥ 19.23' S 58°18'48" W
 - ⑦ 26.50' N 45°30'00" W
 - ⑧ 13.99' S 13°59'25" W
 - ⑨ 13.13' S 65°33'38" E
 - ⑩ 19.17' S 57°01'41" W
 - ⑪ 27.07' S 78°49'55" W
 - ⑫ 39.39' N 4°25'49" W
 - ⑬ 24.16' S 69°11'41" E
 - ⑭ 30.56' N 10°05'12" E
 - ⑮ 16.70' S 10°10'01" E
 - ⑯ Curve
Delta = 1°16'17"
Radius = 970.66'
Arc Length = 21.54'
Tangent = 10.77'
Chord Length = 21.54'
Chord Bearing = S 10°52'25" E

I hereby certify that this plat is a true delineation of a survey made for the Ohio Department of Transportation in 1999.
By: Rodney C. Yoder
Rodney C. Yoder, P.S. 7220
Date: 9/23/99



BASIS FOR BEARINGS
Bearings are assumed and used for project use only

Documents Used: Volumes and Pages as shown