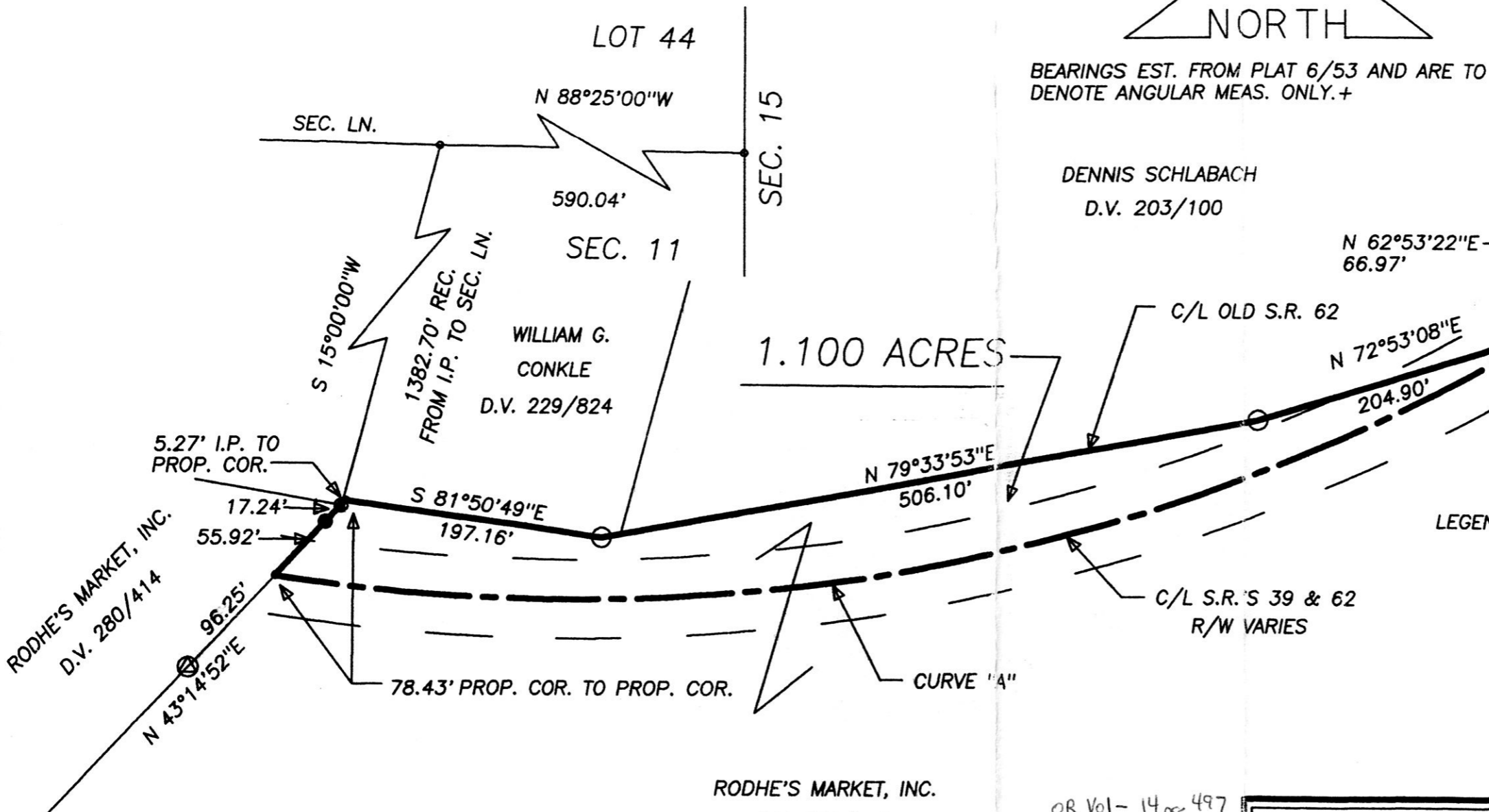


CURVE	RADIUS	TANGENT	LENGTH	DELTA	DEGREE	CHORD	CH. BEARING
A	1426.13'	548.68'	1047.57'	42°05'12"	4°01'03"	1024.18'	S 78°04'25"W

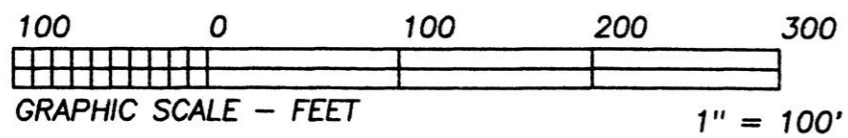
REFERENCE DOCUMENTS: VOL 16 PAGE 823  
 TAX MAPS  
 DEEDS AS SHOWN  
 SURVEY PLATS: 9/211, 8/278,  
 6/53 AND A PLAT FOR RODHE'S MKT.  
 BY SHAMP DATED 1/14/98.



NORTH  
 BEARINGS EST. FROM PLAT 6/53 AND ARE TO DENOTE ANGULAR MEAS. ONLY. +

**LOT SPLIT**  
 APPROVED BY THE  
**VILLAGE OF MILLERSBURG**  
**PLANNING COMMISSION**  
 NO PLAT REQUIRED  
 MILLERSBURG  
 PLANNING COMMISSION  
 DATE: MAY 19 1998

- LEGEND:
- = STONE FD.
  - = 5/8" RE-BAR FD. UNLESS NOTED
  - = POINT-OF-DEPARTURE
  - = 5/8" X 30" RE-BAR W/PLASTIC I.D. CAP SET
  - ⊗ = R/R SPIKE SET
  - △ = R/R SPIKE FD.
  - ⊙ = CONC. MONUMENT FD.



RODHE'S MARKET, INC.  
 D.V. 222/672

9800003795  
 Filed for Record in  
 HOLMES COUNTY, OH  
 SALLY MILLER  
 On 08-14-1998 At 03:34 PM.  
 SMALL PLAT 20.00  
 Book OR Vol. 16 Pg. 823 - 823

OR Vol- 14 pg 497  
 - 14 pg 501  
 - 14 pg 504  
 - 14 pg 508

9800003795  
 LAUREL SCHMID ATTY  
 MILLERSBURG,

PLAT APPROVED  
 8/5/98 *lg*

<b>HEARTLAND SURVEYING, INC</b>			
Jim Shamp		MILLERSBURG, OH 44654	
5210 T.R. 257		PH: 330-674-4698	
SURVEY DENNIS SCHLABACH		STATE OHIO	
COUNTY HOLMES	TWP. HARDY	RNG. 7 W	TWP. 9 N
VILLAGE OF MILLERSBURG SECTION 11		4/98 980506	

I CERTIFY THIS PLAT & SURVEY TO BE CORRECT  
 TO THE BEST OF MY KNOWLEDGE:

*J. Shamp*  
 JIM SHAMP, REG. SUR. NO. S-6088  
 DATE MAY 13, 1998

