

HARDY TOWNSHIP
S.E. QTR. SECTION 17
T-9 N; R-6 W
HOLMES COUNTY, OHIO

INDEXED

9700005545
Filed for Record in
HOLMES COUNTY, OH
SALLY MILLER
On 02-10-1997 At 01:33 pm.
PLSM 20.00
Vol. 16 Page 346
0v 277 page 89



SCALE: 1" = 200'

- STONE FOUND
- ▲ R.R. SPIKE FOUND
- IRON PIN FOUND
- △ R.R. SPIKE SET
- 5/8" RE BAR WITH I.D. CAP SET
I.D. CAP MARKED "BAKER 6938"

REFERENCES:

- DEED VOL. 230 PAGE 893
- " " 272 " 620
- " " 228 " 894



I CERTIFY THIS SURVEY TO BE CORRECT
TO THE BEST OF MY KNOWLEDGE.

Donald C. Baker

DONALD C. BAKER P.S. 6938
5958 T.R. 322
MILLERSBURG, OHIO 44654
PH. (330) 674-4788

AUGUST 16, 1996

46196-MLD

IWAN J. & FRANCES J. MILLER 230-893

N02°15'00"E 1596.54'

12.324 ACRES

(TRACT A)

PHILLIP J. SCHLABACH
272-620

S02°15'00"W 1682.35'

12.324 ACRES

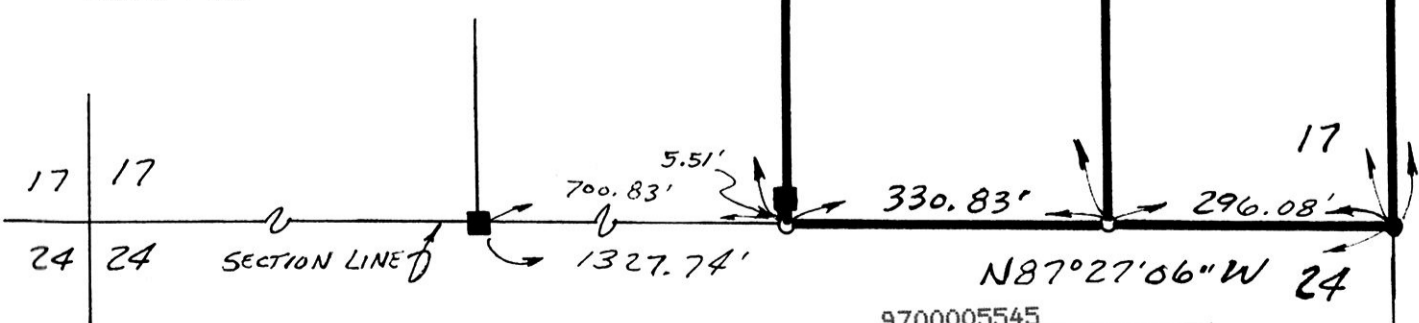
(TRACT B)

S02°15'00"W 1944.13'

S02°15'00"W 2666.13'

HARDY TWP.
BERLIN TWP.

SECTION LINE



PLAT APPROVED

2/10/97

9700005545
LAUREL HINES ATTORNEY
MILLERSBURG, OH 44654