

QTR. TWP. LINE

NW Cor.
LOT 28
1st Qtr.

DAVID GAMERTSFELDER
206/281 206/395

196357 5 86°11'00" E

P.O.B.

347.56'

LOT LINE

pd.
1520.00

Research Data

Deeds: 206/281 206/395 172/227

215/657 262/565

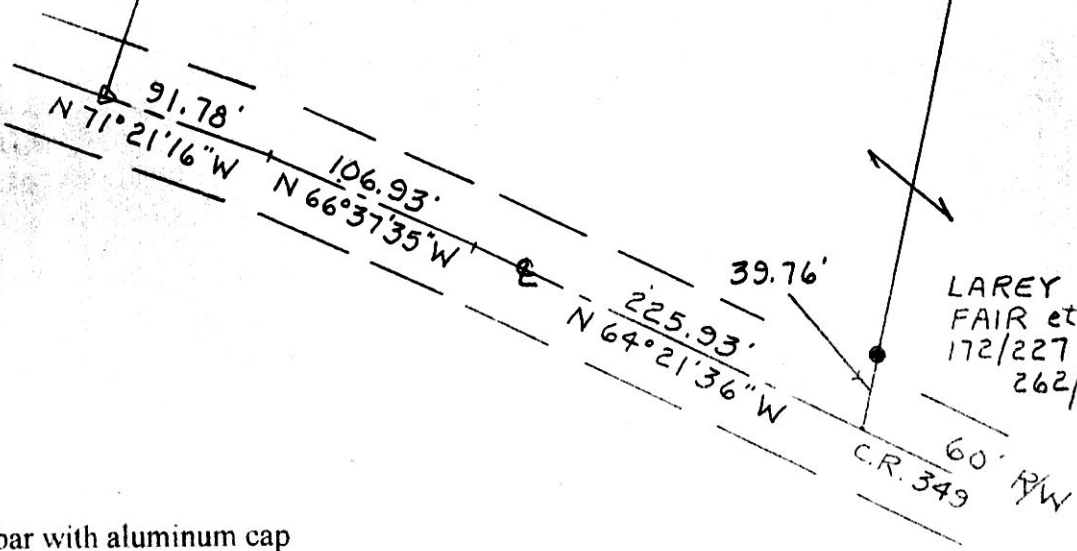
Plats: 8/443

5.900 Ac.

N 18°13'53" E
617.11'

708.78'
S 11°38'40" W

NORTH BASED ON DEEDS 206/281 / 206/395



- = Set 3/4" x 30" rebar with aluminum cap
- = Recovered 1/2" steel pin
- △ = Recovered railroad spike

196357

REC'D
AT 11:16o'clock Am

JAN 24 '96

RECORDED
FEE \$20.00

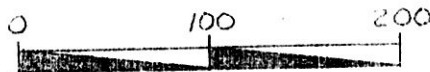
JAN 25 '96

INDEXED

Boundary Survey
for
David Gamertsfelder
in
Lot 28

First Quarter
Range 7W, Township 9N
Hardy Township
Holmes County
Ohio

Scale: 1" = 100' August 16, 1995



Plat VOL 16 PAGE 6 *Sally Miller* RECORDER
Garnett



Bruce D. Eckelberry
Registered Professional Surveyor No. 7103

PLAT APPROVED

1/23/96 B

Prepared By
AMERICAN PRECISION SURVEYING
450 S. 4th St. (614) 622-2783
COSHOCKTON, OHIO 43812