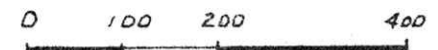


HARDY TOWNSHIP
 S.W. QTR. SECTION 12
 N.E. QTR. SECTION 18
 N.W. QTR. SECTION 19
 T-9N; R-7W
 HOLMES COUNTY, OHIO

SURVEYED FOR MARGARET UHL



SCALE: 1" = 200'
 • IRON PIN FOUND
 Δ RR SPIKE SET
 ○ 5/8" REBAR WITH ID CAP SET
 ID CAP MARKED "BAKER 6938"

R 2U. Rec. 9 used

BEARINGS FROM PLAT VOL 10 PAGE 282

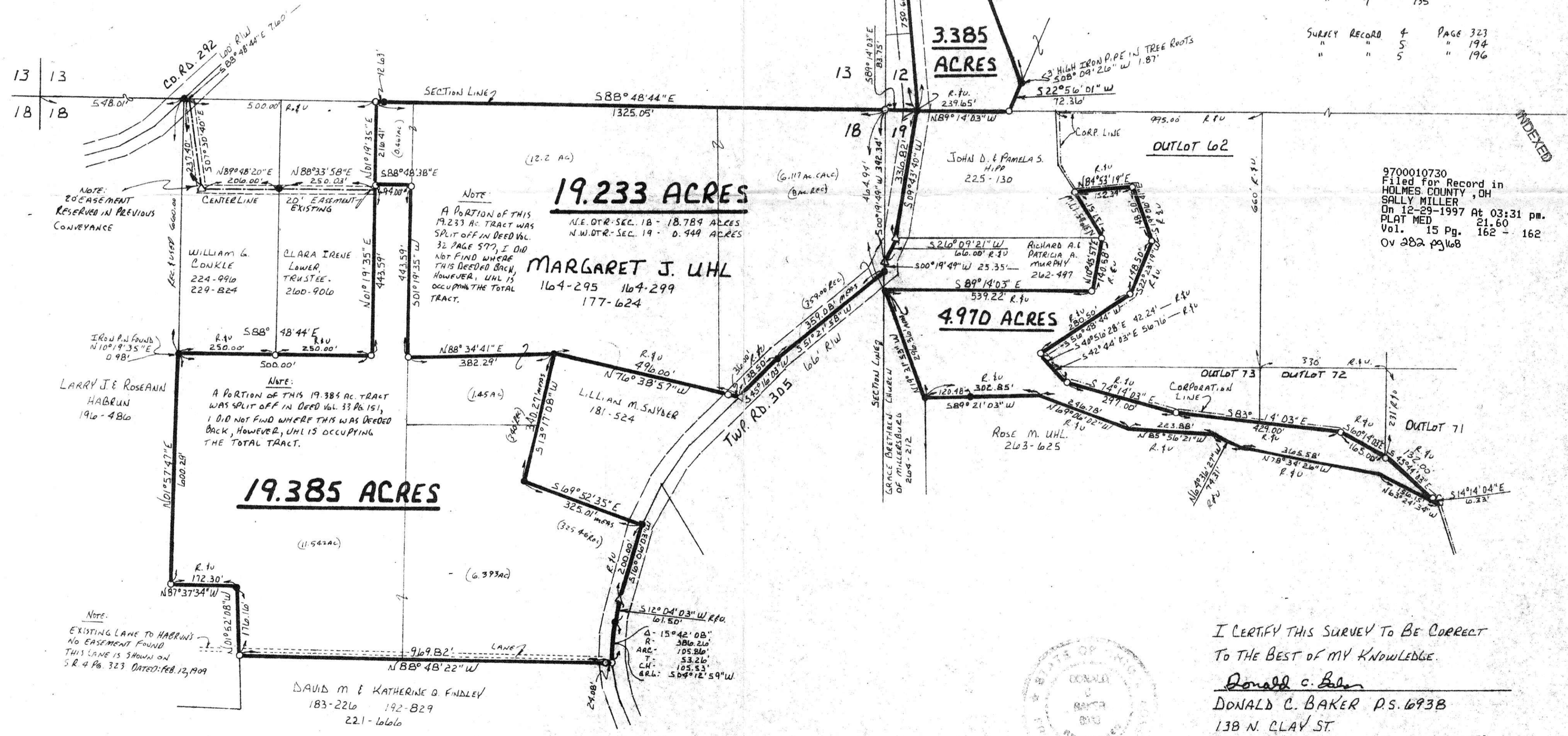
REFERENCES:

- DEED VOL. 177 PAGE 624
- DEED VOL. 225 PAGE 130
- DEED VOL. 219 PAGE 270
- DEED VOL. 262 PAGE 497
- DEED VOL. 263 PAGE 625
- DEED VOL. 264 PAGE 212
- DEED VOL. 181 PAGE 524
- DEED VOL. 260 PAGE 906
- DEED VOL. 196 PAGE 486
- DEED VOL. 221 PAGE 666
- DEED VOL. 229 PAGE 824
- DEED VOL. 19 PAGE 206

SURVEYS

PLAT VOL	PG.	PG.
13	67	161
"	5	"
"	11	129
"	4	45
"	10	242
"	7	735

SURVEY RECORD	PG.	PAGE
4	5	323
"	"	194
"	5	196



9700010730
 Filed for Record in
 HOLMES COUNTY, OH
 SALLY MILLER
 On 12-29-1997 At 03:31 pm.
 PLAT MED 21.60
 Vol. 15 Pg. 162 - 162
 Ov 282 pg 168



I CERTIFY THIS SURVEY TO BE CORRECT
 TO THE BEST OF MY KNOWLEDGE.

Donald C. Baker
DONALD C. BAKER P.S. 6938
 138 N. CLAY ST.
 MILLERSBURG, OHIO 44654
 PH. (330) 674-4788
 AUGUST 7, 1997

35497-SRU
 F.C.C. - J.D. DARR

9700010730
 RONDA STEIMEL
 MILLERSBURG,

PLAT APPROVED

12/21/97