

KILLBUCK TOWNSHIP S.E. QTR. SECTION 3 N.E., N.W. & S.W. QTRS. SECTION 8 T-8 N-R-7W HOLMES COUNTY, OHIO

(SURVEYED FOR RAILS TO TRAILS)

0 150 300 600

SCALE: 1" = 300'

- STONE FOUND
- IRON PIN FOUND
- 5/8" RE BAR WITH I.D. CAP SET
I.D. CAP MARKED "BAKER 6938"

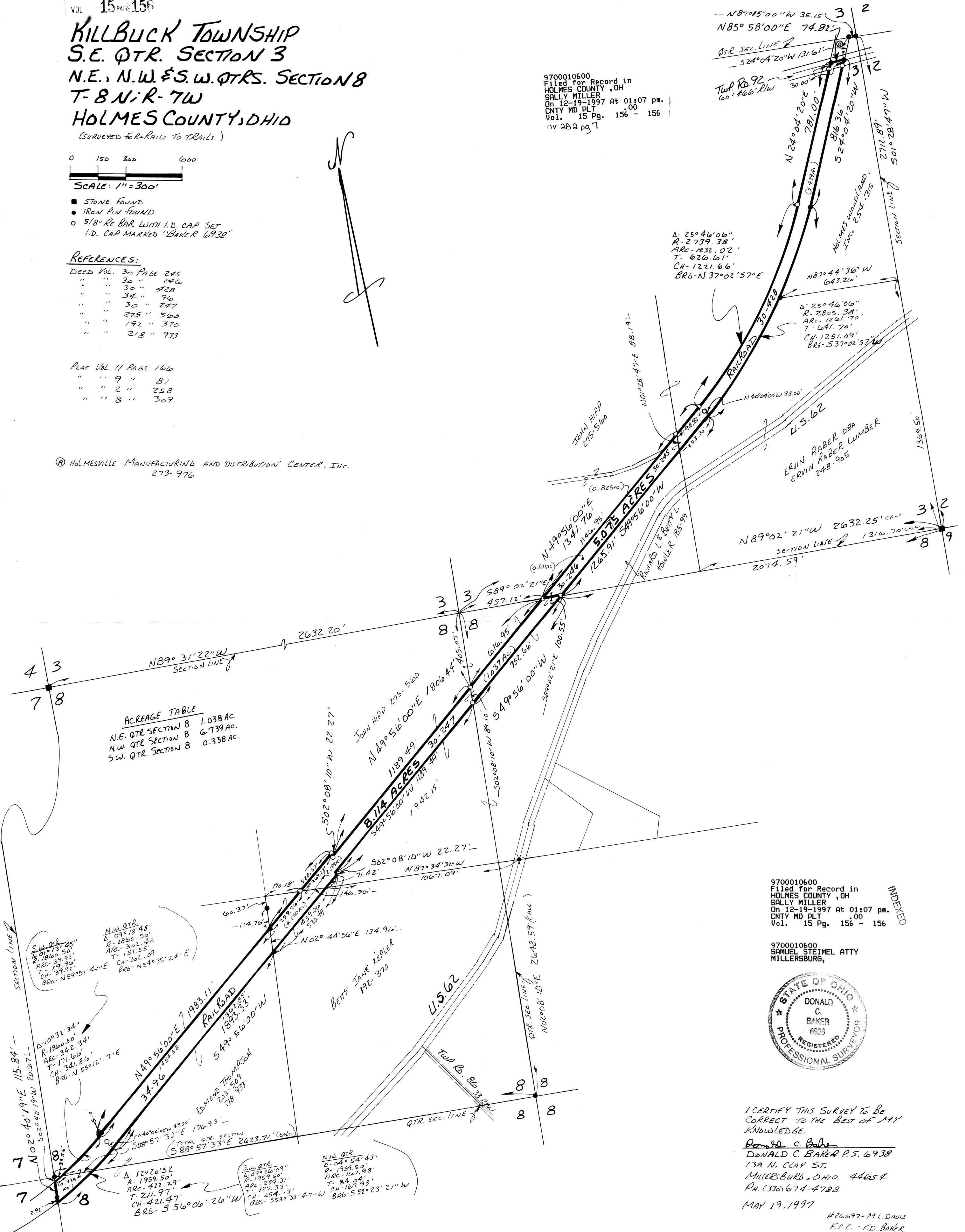
REFERENCES:

DEED VOL. 30 PAGE 245
 " " 30 " 246
 " " 30 " 428
 " " 34 " 96
 " " 30 " 247
 " " 275 " 560
 " " 192 " 370
 " " 218 " 933

PLAT VOL. 11 PAGE 166
 " " 9 " 81
 " " 2 " 258
 " " 8 " 309

ⓐ HOLMESVILLE MANUFACTURING AND DISTRIBUTION CENTER, INC.
 273-976

9700010600
 Filed for Record in
 HOLMES COUNTY, OH
 SALLY MILLER
 On 12-19-1997 At 01:07 pm.
 CNTY MD PLT 00
 Vol. 15 Pg. 156 - 156
 ov 282 pg 7



ACREAGE TABLE

N.E. QTR. SECTION 8	1.038 AC.
N.W. QTR. SECTION 8	6.739 AC.
S.W. QTR. SECTION 8	0.338 AC.

9700010600
 Filed for Record in
 HOLMES COUNTY, OH
 SALLY MILLER
 On 12-19-1997 At 01:07 pm.
 CNTY MD PLT 00
 Vol. 15 Pg. 156 - 156

9700010600
 SAMUEL STEIMEL ATTY
 MILLERSBURG,



I CERTIFY THIS SURVEY TO BE
 CORRECT TO THE BEST OF MY
 KNOWLEDGE.
Donald C. Baker
 DONALD C. BAKER P.S. 6938
 138 N. CLAY ST.
 MILLERSBURG, OHIO 44654
 Ph. (330) 674-4788
 MAY 19, 1997
 #26697-M.L. DAVIS
 F.O.C. - F.D. BAKER

PLAT APPROVED
 12/4/97
 Plat "F"