

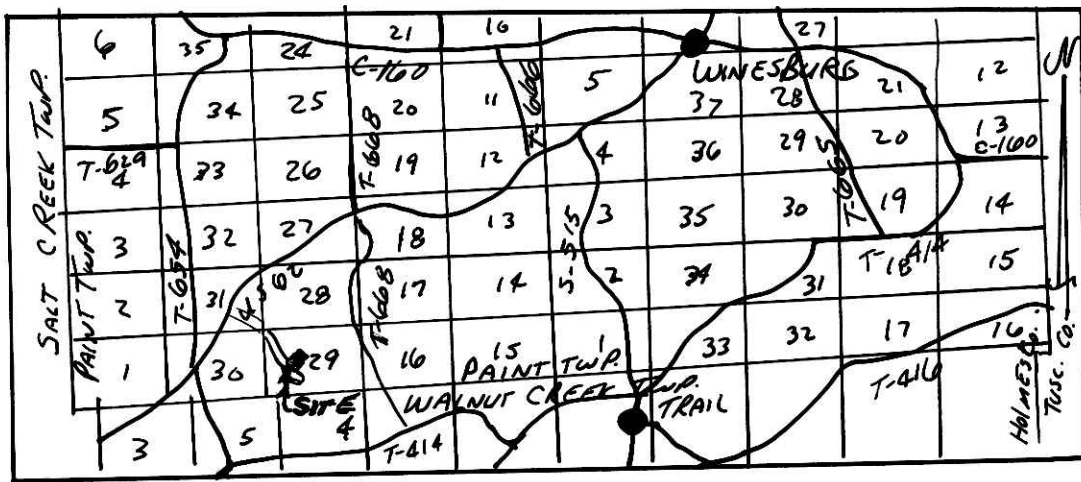
EAST HOLMES INDUSTRIAL PARK ALLOTMENT NO. 4

PAINT TOWNSHIP
4TH QTR. LOT 29
T-10N R-5W
HOLMES COUNTY, OHIO

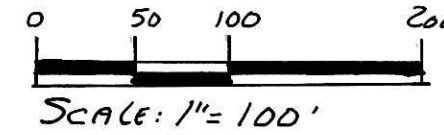
GRANTOR:
TIMBERSTONE, LTD.
% DUTCHLAND CONSTRUCTION
5288 S.R. 39W
BERLIN, OHIO 44654
PH. (330) 893-2255
(TONY MULLET)

9700010197
LAUREL HINES ATTY
MILLERSBURG, OH 44654

9700010197
Filed for Record in
HOLMES COUNTY, OH
SALLY MILLER
On 11-25-1997 at 03:43 pm.
PLAT MED 21.60
Vol. 15 Pg. 152 - 152



LOCATION MAP - NOT TO SCALE
(SURVEYED FOR: TIMBERSTONE, LTD.)



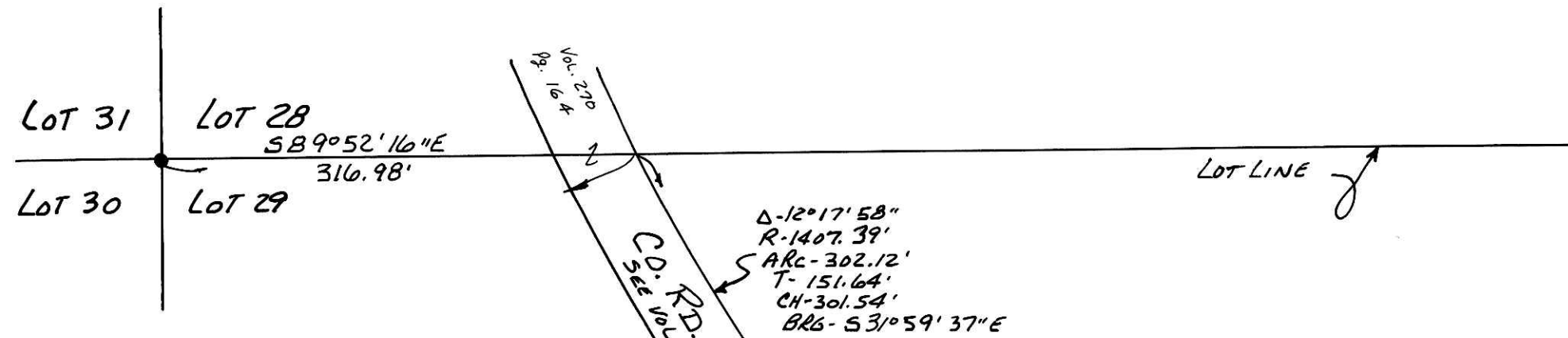
SCALE: 1" = 100'

- IRON PIN FOUND
- 5/8" REBAR WITH I.D. CAP SET
I.D. CAP MARKED "BAKER 6938"

NOTE: Please sign in permanent black ink.

CERTIFICATE OF OWNERSHIP AND DEDICATION
We hereby certify that we are the owners of the property shown and described hereon and that we hereby adopt this plan of subdivision with our free consent and establish the minimum building restriction lines.

Anthony B. Mullet, Member 11/24/97
Jan L. Mullet, Member 11/24/97



REFERENCES:
DEED VOL. 276 PAGE 649
" " 270 " 104

PLAT VOL. 2 PAGE 224
" " 15 " 114
" " 13 " 179
" " 13 " 197
" " 10 " 58
" " 10 " 319

BEARINGS FROM DEED VOL. 276 PAGE 649

AREA IN LOT 1.862 ACRES
AREA IN ROAD DEDICATION 0.000 ACRES
TOTAL AREA IN ALLOTMENT 1.862 ACRES

For erosion control, the landowner will follow the Ohio Technical Standard and Specifications Critical Area Planting #342 Guidelines. A copy of this Technical Standards and Specifications Guide is available at the Holmes Soil and Water Conservation District, 62 West Clinton Street, Millersburg, OH 44654

No further splits will be permitted without replatting said lot.

This lot is for COMMERCIAL purposes only.

Prepared By:
Donald C. Baker Surveying
138 N. Clay St.
Millersburg, OH 44654
Ph. (330) 674-4788

CURVE DATA

CURVE "A"

Δ-03°00'03"
R-275.00'
ARC-14.40'
T-7.20'
CH-14.40'
BRG-N70°32'30"W

Δ-44°00'03"
R-60.00'
ARC-40.08'
T-24.24'
CH-44.95'
BRG-N50°02'30"W

Δ-90°00'00"
R-88.00'
ARC-138.23'
T-88.00'
CH-124.45'
BRG-S27°02'30"E

Δ-134°00'00"
R-88.00'
ARC-205.81'
T-207.32'
CH-162.01'
BRG-S84°57'30"W

TRANSFER NOT NECESSARY
DATE November 26, 1997
AUDITOR Richard A. Heaven
JC

CERTIFICATE OF THE APPROVAL OF WATER AND SEWERAGE SYSTEMS
I hereby certify that EAST HOLMES INDUSTRIAL PARK NO. 4 IS APPROVEABLE FOR A CENTRAL WATER SUPPLY AND AN ON-SITE SEWAGE TREATMENT SYSTEM APPROVED BY THE OHIO ENVIRONMENTAL PROTECTION AGENCY AND, AS SUCH, MEETS THE REQUIREMENTS OF THE HOLMES COUNTY DISTRICT BOARD OF HEALTH, AND ARE HEREBY APPROVED AS SHOWN.

Date Nov 25, 1997 County Health Commissioner

CERTIFICATE OF APPROVAL BY THE HOLMES SOIL AND WATER CONSERVATION DISTRICT
I hereby certify that I have approved the subdivision plat and/or agreements or provisions for sedimentation and erosion control as stated or shown hereon.

Date 11/24/97 Nala Hatfield
Holmes Soil and Conservation District

CERTIFICATE OF THE APPROVAL BY THE COUNTY COMMISSIONERS
I hereby certify that the Holmes County Commissioners have approved the subdivision plat as shown hereon.

Date 11-24-97 Leah W. Miller
Chairman, County Commissioners

CERTIFICATE OF THE APPROVAL OF PLAT AND ENGINEERING DETAILS
I hereby certify that I have approved the plat and engineering details of the proposed roads, sewer and water systems and other proposed public facilities in the subdivision plat as shown hereon.

Date 11/24/97 Robert L. Kasper, P.E., P.S.
County Engineer

CERTIFICATE OF APPROVAL FOR RECORDING

I hereby certify that the subdivision plat shown hereon has been found to comply with the subdivision regulations for Holmes County, Ohio, with the exception of such variances, if any, as prenoted in the minutes of the Holmes County Regional Planning Commission and that it has been approved for recording in the office of the County Recorder.

Date 11/25/97 Chris D. Maruschak
Holmes Regional Planning Comm.

CERTIFICATE OF ACCURACY
I hereby certify that the plan shown and described hereon is a true and correct survey to the accuracy required by the Holmes Co. Regional Planning Commission and that the monuments have been placed as shown hereon.

Date 10-31-97 Donald C. Baker
Donald C. Baker P.S. 6938

