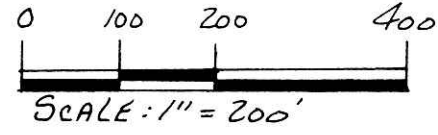


RICHLAND TOWNSHIP
S.W. QTR. SECTION 8
N.W. QTR. SECTION 13
T-8N; R-9W
HOLMES COUNTY, OHIO
(SURVEYED FOR: ELLEN COY)



- STONE FOUND
- IRON PIN FOUND
- △ R.R. SPIKE SET
- 5/8" RE BAR WITH I.D. CAP SET
- I.D. CAP MARKED "BAKER 6938"

REFERENCES:

DEED VOL. 185 PAGE 675
" " 277 " 10
" " 167 " 452
" " 274 " 260

PLAT VOL. 16 PAGE 37

CURVE DATA

CURVE "A"
D - 12° 14' 17"
R - 98.21'
ARC - 196.12'
T - 98.44'
CH - 195.75'
BRG - S54° 47' 22" W

CURVE "B"
D - 06° 44' 17"
R - 1036.22'
ARC - 121.86'
T - 61.00'
CH - 121.79'
BRG - N55° 38' 42" E

CURVE "C"
D - 04° 07' 24"
R - 1392.68'
ARC - 100.23'
T - 50.13'
CH - 100.20'
BRG - S83° 36' 44" W

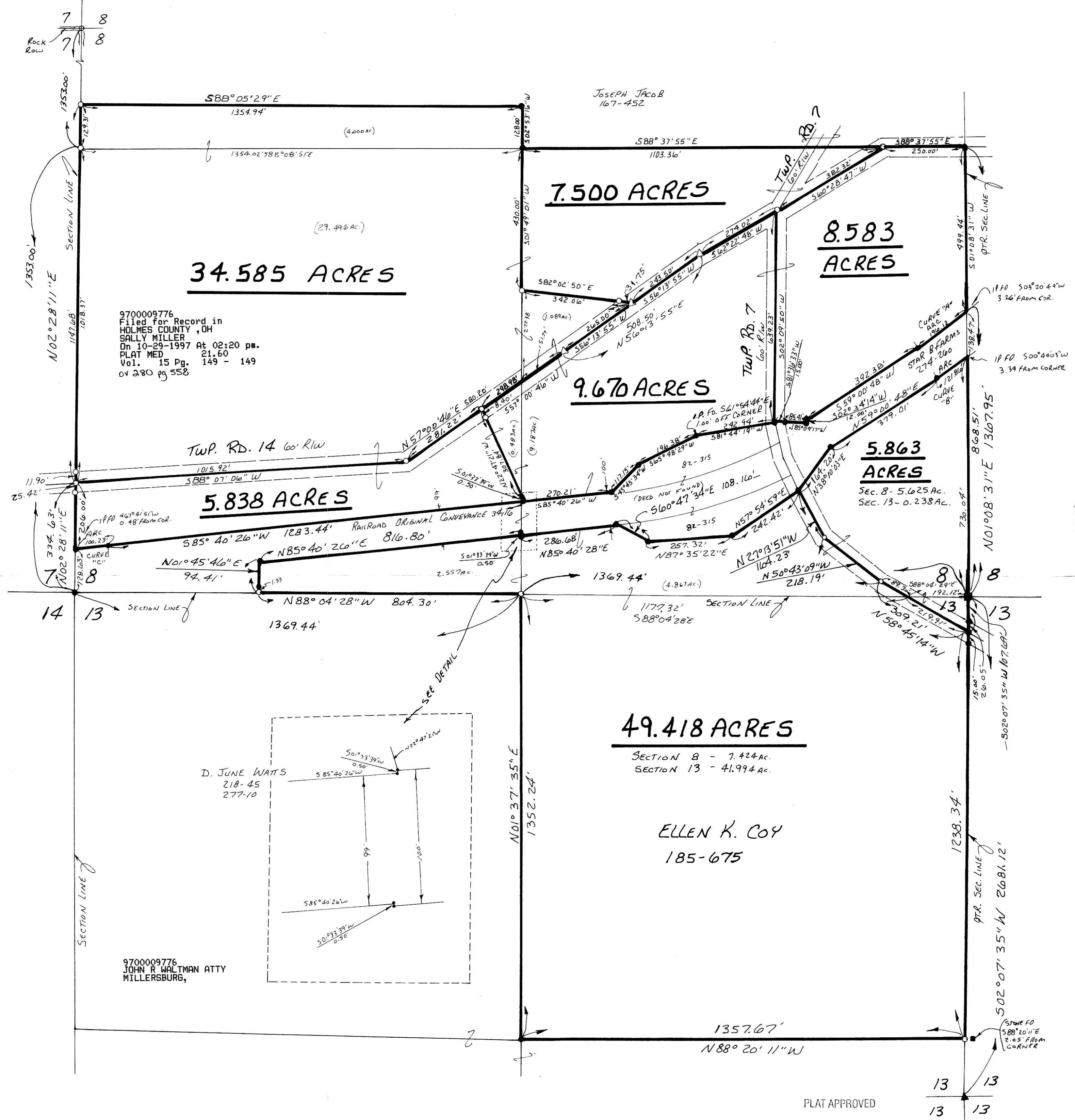


I CERTIFY THIS SURVEY TO BE CORRECT
TO THE BEST OF MY KNOWLEDGE.

Donald C. Baker
DONALD C. BAKER P.S. 6938
138 N. CLAY ST.
MILLERSBURG, OHIO 44654
PH. (330) 674-4788
OCTOBER 7, 1997

#55297 - M.L. DAVIS
F.C.C. - J.D. DARR

BEARINGS FROM PLAT VOL. 15 PAGE 96



9700009776
Filed for Record in
HOLMES COUNTY, OH
SALLY MILLER
On 10-29-1997 At 02:20 pm.
PLAT MED 21.60
Vol. 15 Pg. 149 - 149
of 280 pg 558

D. JUNE WATTS
218-45
277-10

9700009776
JOHN R. WALTMAN ATTY
MILLERSBURG,

49.418 ACRES

SECTION 8 - 7.424 AC.
SECTION 13 - 41.994 AC.

ELLEN K. COY
185-675

PLAT APPROVED

10/28/97

13
13