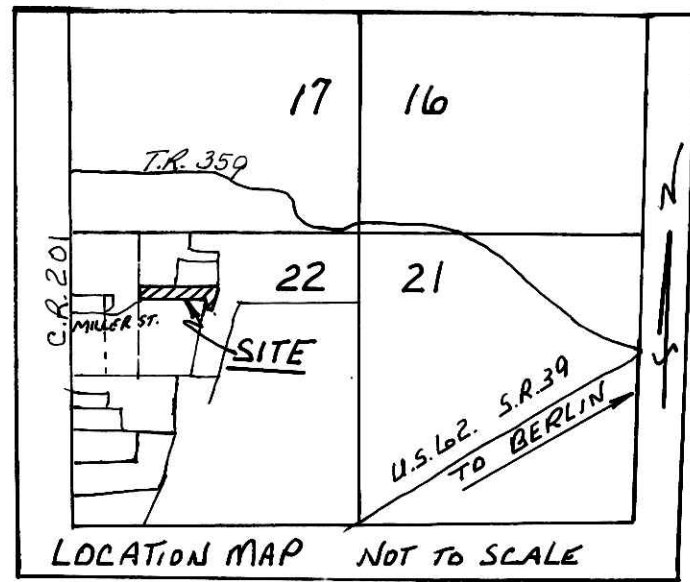


# RAYMOND M. & EDNA HERSHBERGER ALLOTMENT No. 1



BERLIN TOWNSHIP  
1ST. QTR. LOT 22  
T-9N; R-6W  
HOLMES COUNTY, OHIO

GRANTORS:  
RAYMOND & EDNA HERSHBERGER  
6052 C.R. 201  
MILLERSBURG, OHIO 44654

- REFERENCES:
- DEED Vol. 233 PAGE 114
  - DEED Vol. 233 PAGE 321
  - DEED Vol. 233 PAGE 324
  - DEED Vol. 237 PAGE 736
  - PLAT Vol. 10 PAGE 890
  - PLAT Vol. 2 PAGE 203
  - PLAT Vol. 11 PAGE 104
  - PLAT Vol. 10 PAGE 647

0 30 60 120  
SCALE: 1" = 60'  
• IRON P.I. FOUND  
• 5/8" REBAR WITH ID. CAP SET  
ID. CAP MARKED "BAKER 6938"  
▲ CONC. MON. FD.



NOTE: Please sign in permanent black ink.

CERTIFICATE OF OWNERSHIP AND DEDICATION  
We hereby certify that we are the owners of the property shown and described hereon and that we hereby adopt this plan of subdivision with our free consent and establish the minimum building restriction lines.  
Raymond M. Hershberger 3-26-97  
RAYMOND M. HERSHBERGER DATE  
Edna Hershberger 3-26-97  
EDNA HERSHBERGER DATE

970006464  
Filed for Record in  
HOLMES COUNTY, OH  
SALLY MILLER  
On 04-11-1997 At 01:31 pm.  
PLMD 21.60  
Vol. 15 Page 124

CERTIFICATE OF THE APPROVAL OF WATER AND SEWERAGE SYSTEMS  
I hereby certify that the water supply and sewage disposal utility systems installed, or proposed for installation, in the subdivision plat entitled:  
Raymond M. & Edna Hershberger  
fully meet the requirements of the Holmes County Board of Health and the Ohio State Health Department, and are hereby approved as shown.  
3-28-97  
Date  
[Signature]  
County Health Commissioner

CERTIFICATE OF APPROVAL BY THE HOLMES SOIL AND WATER CONSERVATION DISTRICT  
I hereby certify that I have approved the subdivision plat and/or agreements or provisions for sedimentation and erosion control as stated or shown hereon.  
March 27, 1997  
Date  
[Signature]  
Holmes Soil and Conservation District

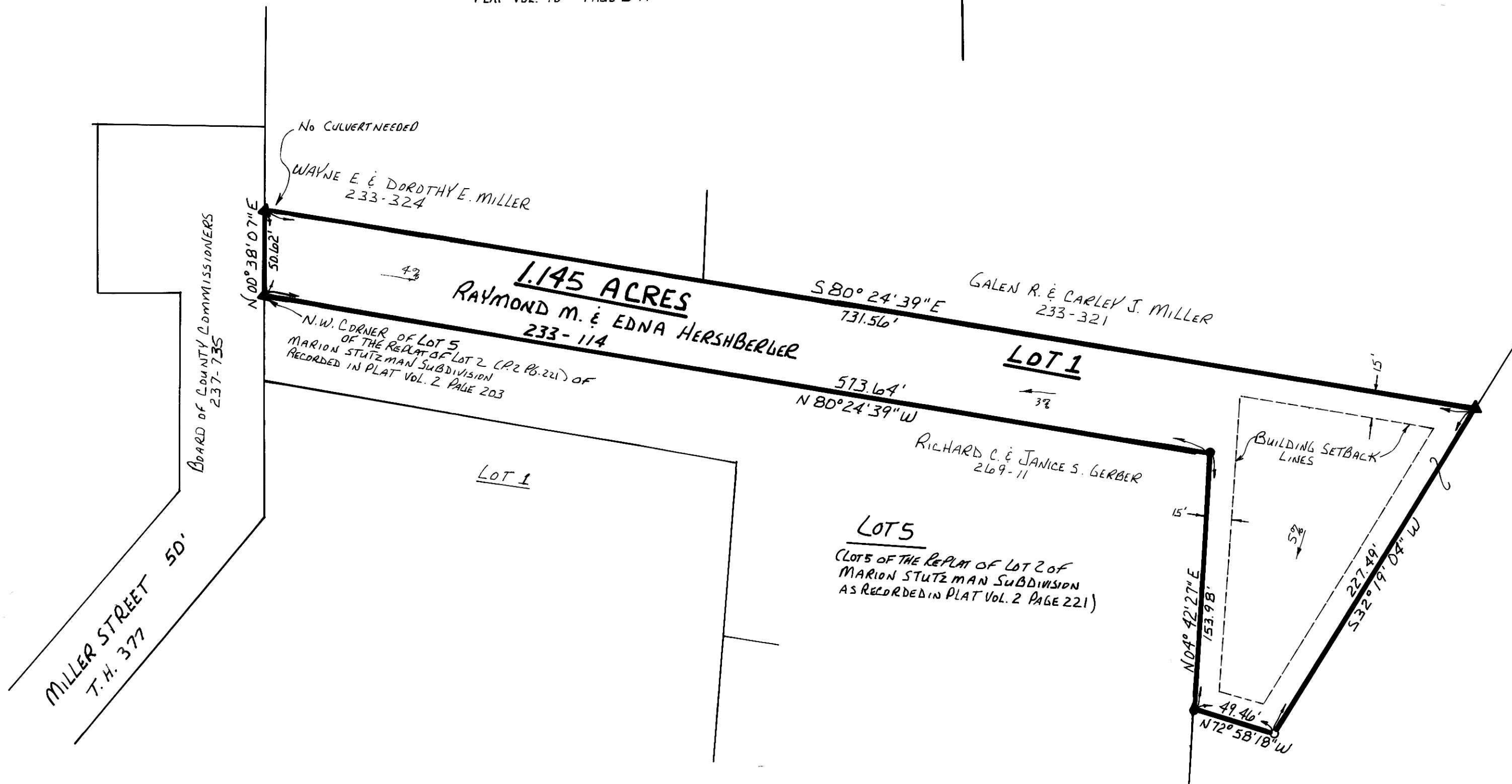
CERTIFICATE OF THE APPROVAL BY THE COUNTY COMMISSIONERS  
I hereby certify that the Holmes County Commissioners have approved the subdivision plat as shown hereon.  
4-10-97  
Date  
Leah W. Miller  
Chairman, County Commissioners

CERTIFICATE OF THE APPROVAL OF PLAT AND ENGINEERING DETAILS  
I hereby certify that I have approved the plat and engineering details of the proposed roads, sewer and water systems and other proposed public facilities in the subdivision plat as shown hereon.  
4/1/97  
Date  
Robert Z. Kasner P.E.P.S.  
County Engineer

CERTIFICATE OF APPROVAL FOR RECORDING  
I hereby certify that the subdivision plat shown hereon has been found to comply with the subdivision regulations for Holmes County, Ohio, with the exception of such variances, if any, as prenoted in the minutes of the Holmes County Regional Planning Commission and that it has been approved for recording in the office of the County Recorder.  
4-10-97  
Date  
Thomas R. Morganti  
Holmes Regional Planning Comm.

CERTIFICATE OF ACCURACY  
I hereby certify that the plan shown and described hereon is a true and correct survey to the accuracy required by the Holmes Co. Regional Planning Commission and that the monuments have been placed as shown hereon.  
2-26-97  
Date  
Donald C. Baker  
Donald C. Baker P.S. 6938

970006464  
GLENN HERSHBERGER  
7682 CR 201  
MILLERSBURG, OH 44654



AREA IN LOT 1.145 ACRES  
AREA IN ROAD DEDICATION 0.000 ACRES  
TOTAL AREA IN ALLOTMENT 1.145 ACRES

Prepared By:  
Donald C. Baker Surveying  
138 N. Clay St.  
Millersburg, OH 44654  
Ph. (330) 674-4788

9697-SRU  
F.C.C. D.C. BAKER



For erosion control, the landowner will follow the Ohio Technical Standard and Specifications Critical Area Planting #342 Guidelines. A copy of this Technical Standards and Specifications Guide is available at the Holmes Soil and Water Conservation District, 62 West Clinton Street, Millersburg, OH 44654

This lot is for residential purposes only.

No further splits will be permitted without replatting said lot.

4-11-97  
Richard A. Baker