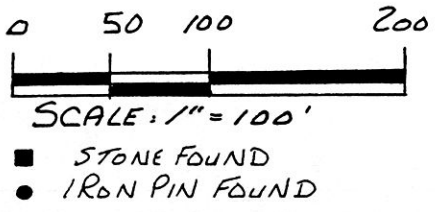


196056

VILLAGE OF MILLERSBURG
HARDY TOWNSHIP
1ST. QTR. LOT 41 & LOT 40
T-9N; R-7W
HOLMES COUNTY, OHIO



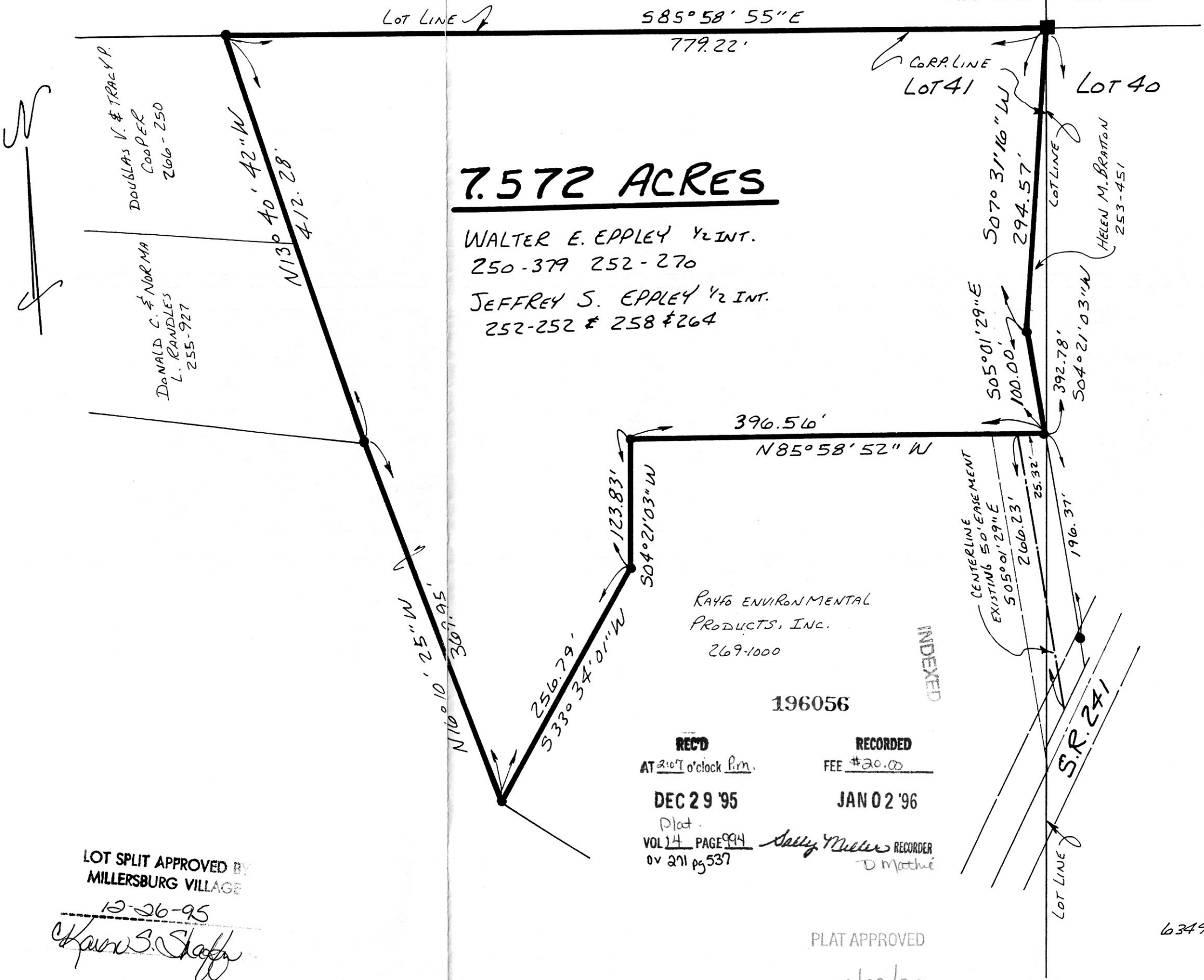
REFERENCES:

- DEED VOL. 196 PAGE 838
- " " 228 " 584
- " " 248 " 972
- " " 266 " 250
- " " 255 " 927
- " " 209 " 1000
- PLAT VOL. 7 PAGE 761
- " " 5 " 51
- " " 2 " 195
- " " 13 " 121
- " " 12 " 294
- BEARINGS FROM PLAT VOL. 2 PAGE 223



I CERTIFY THIS SURVEY TO BE CORRECT TO THE BEST OF MY KNOWLEDGE.
Donald C. Baker
DONALD C. BAKER P.S. 6938
5958 T.R. 322
MILLERSBURG, OHIO 44654
PH. (216) 674-4788
NOVEMBER 17, 1995

LOT SPLIT APPROVED BY
MILLERSBURG VILLAGE
12-26-95
Karen S. Shaffer



7.572 ACRES

WALTER E. EPPLEY 1/2 INT.
250-379 252-270
JEFFREY S. EPPLEY 1/2 INT.
252-252 & 258 & 264

RAYG ENVIRONMENTAL
PRODUCTS, INC.
269-1000

196056

REC'D AT 2:07 o'clock P.M.
DEC 29 '95
Plat.
VOL 14 PAGE 994
0v 271 pg 537

RECORDED FEE \$20.00
JAN 02 '96
Sally Miller RECORDER
D. Matthei

PLAT APPROVED
12/29/95

63495-MLS