

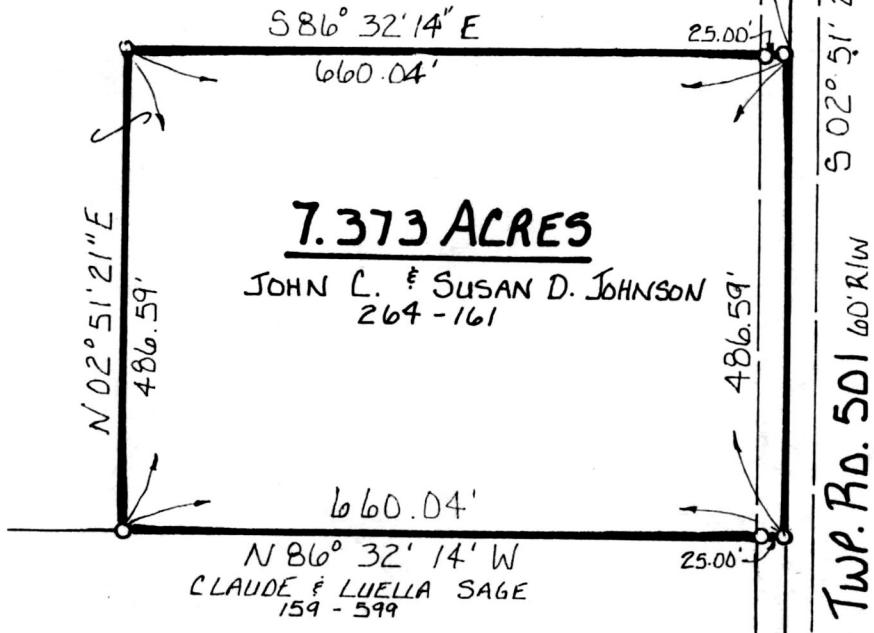
VOL 14 PAGE 943

REFERENCES:

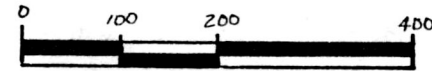
- DEED VOL. 238 PAGE 78
- DEED VOL. 229 PAGE 634
- DEED VOL. 264 PAGE 161
- DEED VOL. 257 PAGE 220
- DEED VOL. 159 PAGE 599
- PLAT VOL. 10 PAGE 507
- BEARINGS FROM DEED VOL. 263 PAGE 812

195042

REC'D AT 12:46 o'clock P.M. OCT 20 '95
 RECORDED FEE \$ 20.00 OCT 23 '95
 Platted
 VOL 14 PAGE 943 Sally Miller RECORDER
 DV 270 pg 646 B.R.



RIPLEY TOWNSHIP
 S.E. QTR. SECTION 18
 T-17N; R-14W
 HOLMES COUNTY, OHIO



SCALE: 1" = 200'

R.A. SPIKE FOUND
 5/8" REBAR WITH I.D. CAP SET
 I.D. PIN MARKED "BAKER 6938"



I CERTIFY THIS SURVEY TO BE CORRECT TO THE BEST OF MY KNOWLEDGE.

Donald C. Baker

DONALD C. BAKER P.S. 6938

5958 T.R. 322
 MILLERSBURG, OHIO 44654

PH: (216) 674-4788

OCT. 13, 1995

FJM

PLAT APPROVED

10/19/95A