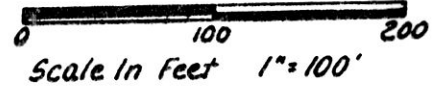


VILLAGE OF MILLERSBURG
HOLMES COUNTY, OHIO
N. Pt. Outlot 82
NW Qtr. Section 19, T-9N, R-7

VOL 14 PAGE 897



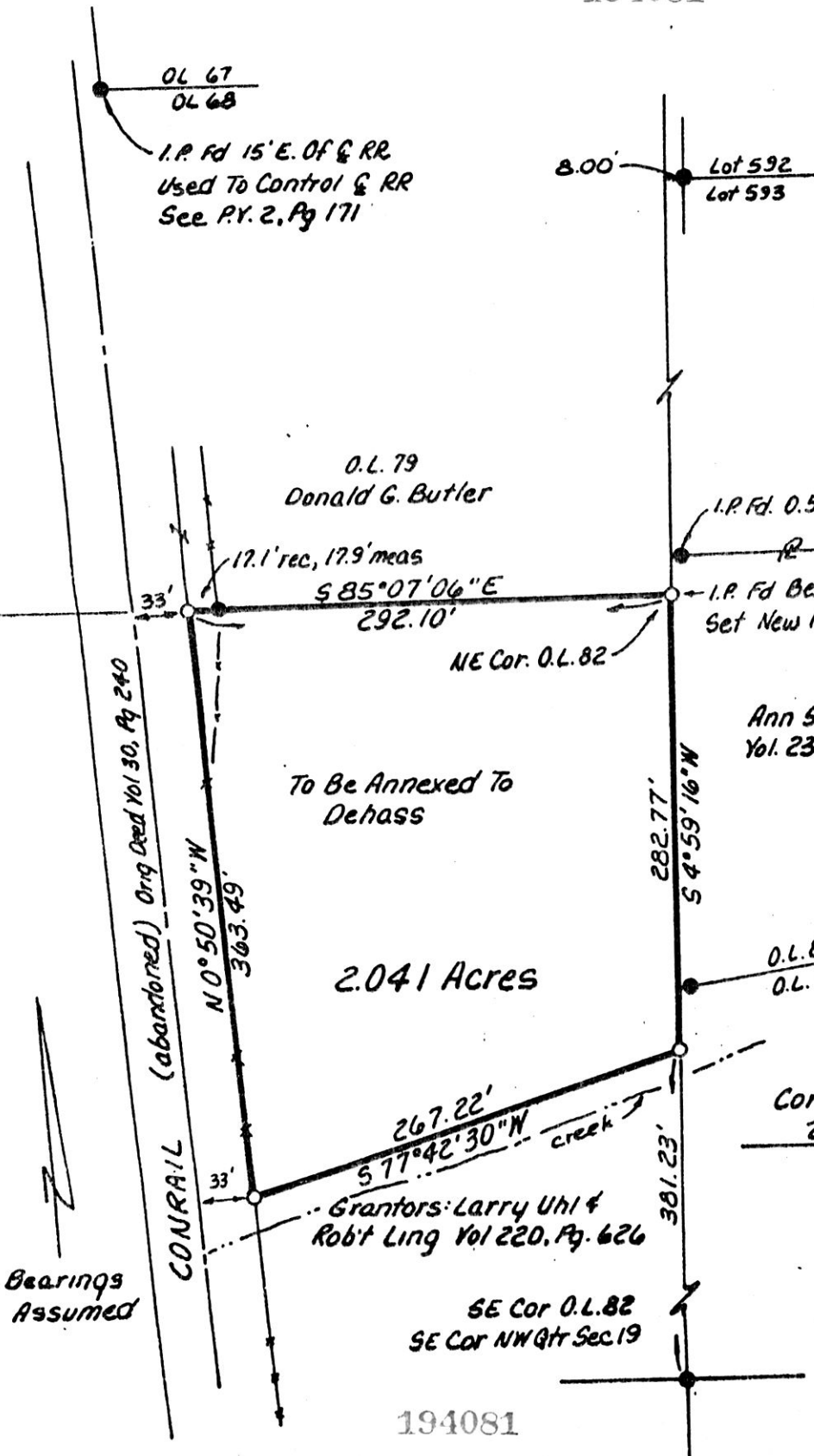
- Iron Pin Found
- Iron Pin Set - 5/8" Rebar W/ Yellow Cap Marked "LONG SURVEYING, INC."

References:
 P.Y. 2, Pg 171
 P.Y. 3, Pg 418
 RR Track Maps
 P.Y. 5, Pg 86
 Deeds As Shown



Ann S. Dehass
Vol. 237, Pg 613

I Certify This Survey To Be
 Correct To The Best Of My Knowledge
 William H. Long Nov. 16, 1988
 William H. Long P.S. 6505
 LONG SURVEYING, INC.
 13301 T.R. 503
 Big Prairie, Ohio 44611



194081

REC'D
AT 3:16 o'clock P.M.

RECORDED
FEE \$ 20.00

AUG 21 '95

AUG 22 '95

Plat
VOL 14 PAGE 897
OV 269 Pg 975

Sally Miller RECORDER
J. Muller

LOT SPLIT APPROVED BY
MILLERSBURG VILLAGE

7-10-95

Kevin S. Shaffer

PLAT APPROVED

8/18/95