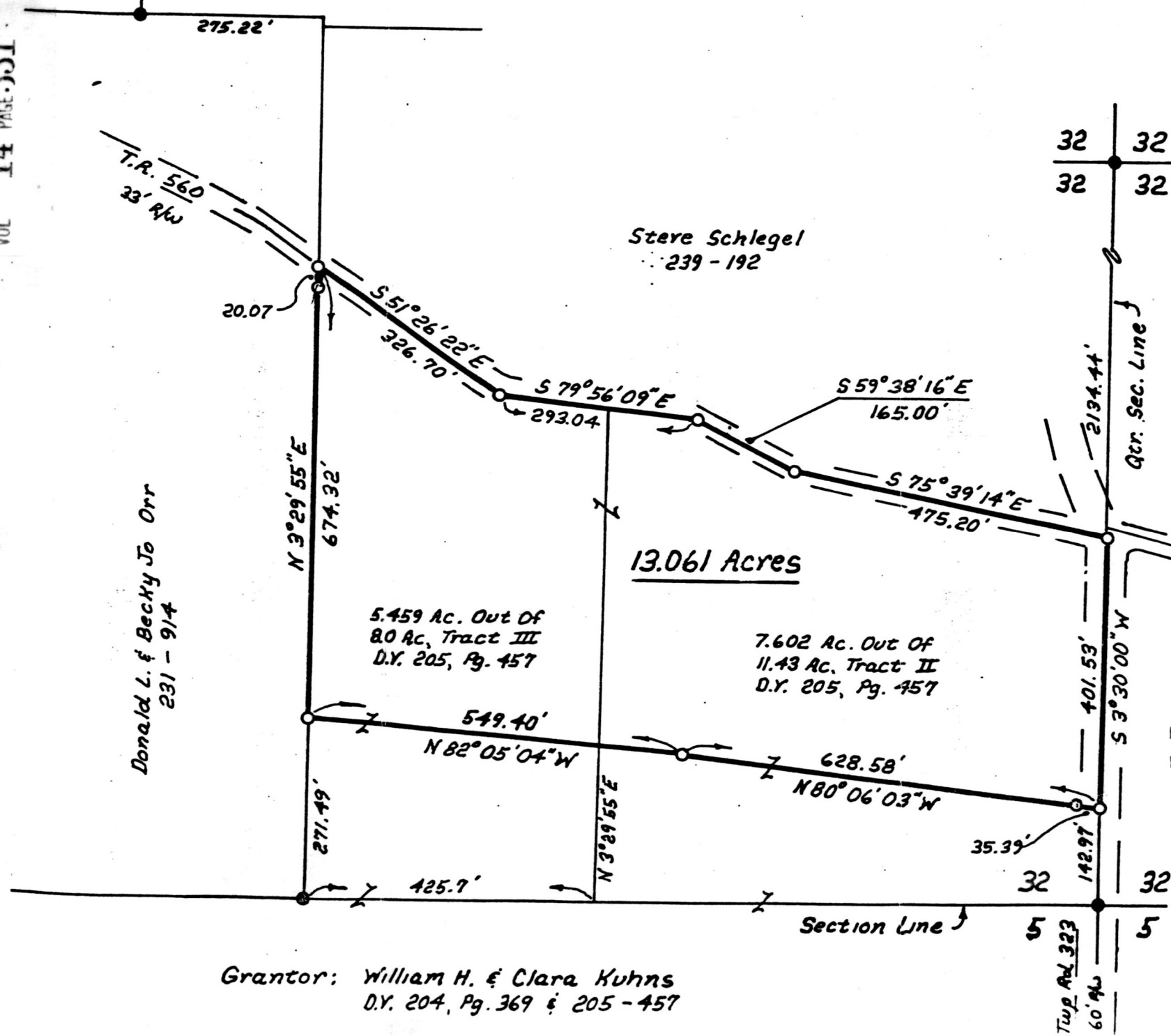


PRAIRIE TOWNSHIP
HOLMES COUNTY, OHIO
SW. QTR. SEC. 32, T-14N, R-13W



Donald L. & Becky Jo Orr
231 - 9/4

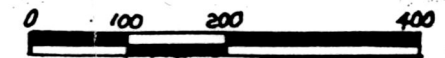
Steve Schlegel
239 - 192

13.061 Acres

5.459 Ac. Out Of
80 Ac, Tract III
D.Y. 205, Pg. 457

7.602 Ac. Out Of
11.43 Ac, Tract II
D.Y. 205, Pg. 457

Grantor: William H. & Clara Kuhns
D.Y. 204, Pg. 369 & 205 - 457



Scale 1" = 200'

- Iron Pin Found
- Iron Pin Set (1/8" Rebar With Yellow Cap Marked "LONG 7115")

References:

- Plat Vol. 12, Pg. 784
- Plat Vol. 14, Pg. 172
- Plat Vol. 10, Pg. 377
- Deed Vol. 205, Pg. 457
- Deed Vol. 239, Pg. 192

Bearings Based On Qtr Sec. Line
From Plat Vol. 12, Pg. 784.

184394

Rec'd OCT 20 1999

AT 12:00 O'CLOCK P.M.

Recorded OCT 21 1999

Holmes Co. Ohio Fee: \$20.00

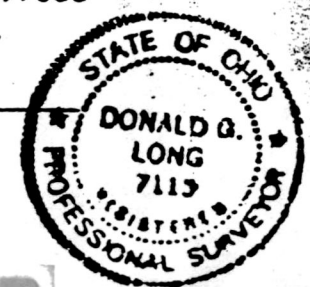
Plat Vol. 14, Pg. 331
Deed Vol. 261 pg 988

Recorder: Sally Miller
Carol White

I Certify This Survey To Be Correct
To The Best Of My Knowledge.

Donald G. Long 9/14/93

Donald G. Long P.S. 7115
LONG SURVEYING, INC.
12524 C.R. 6
Killbuck, Ohio 44637



PLAT APPROVED
10/26/93