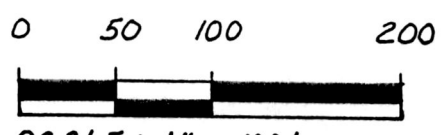
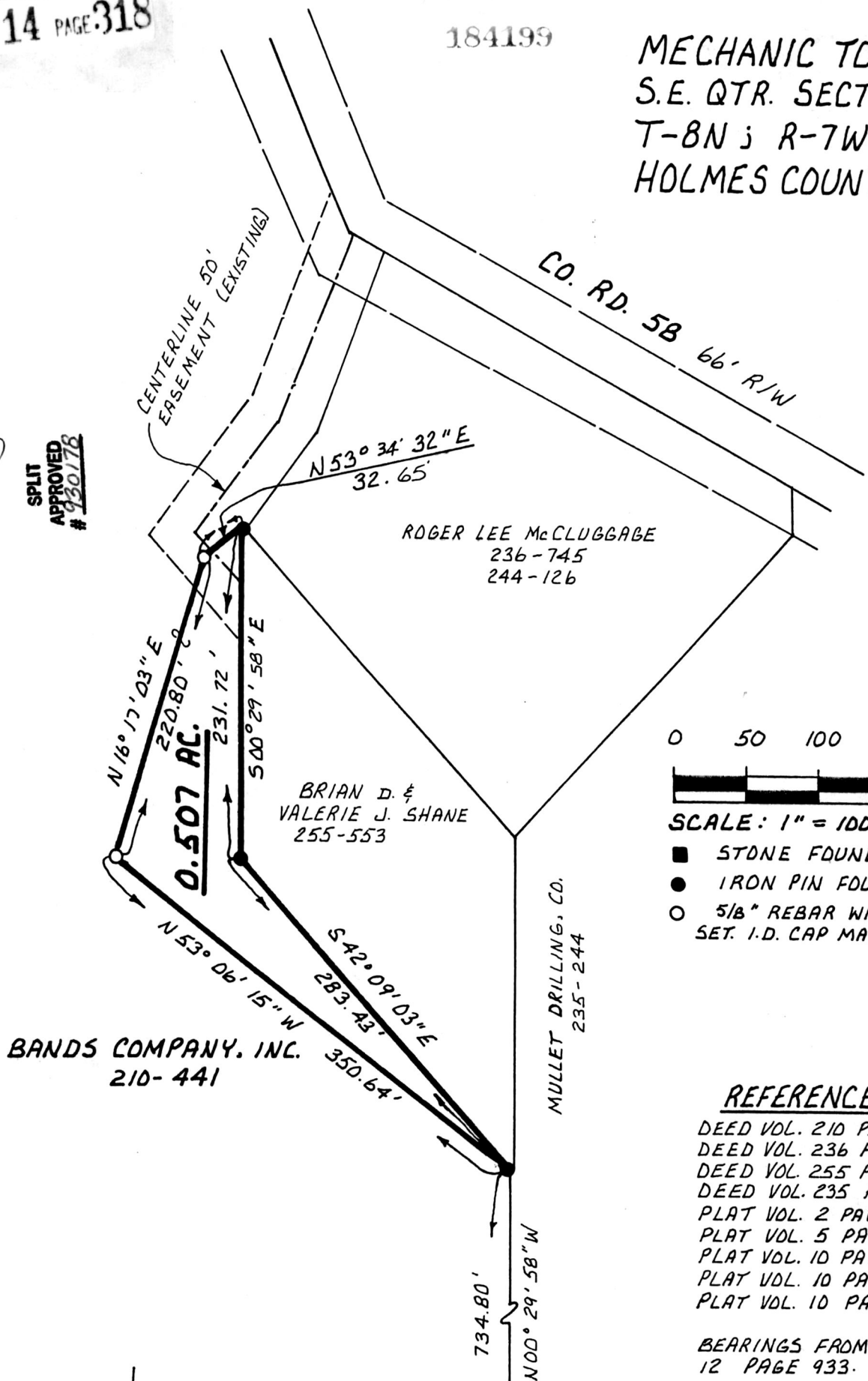


MECHANIC TOWNSHIP
S.E. QTR. SECTION 1
T-8N; R-7W
HOLMES COUNTY, OHIO

This 0.507 acre parcel is not approved for any use that generates wastewater.
Denise G. M. [Signature]
Sanitarian
9/21/93
Date

SPLIT APPROVED # 930178

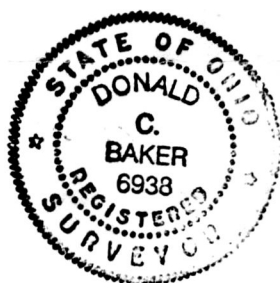
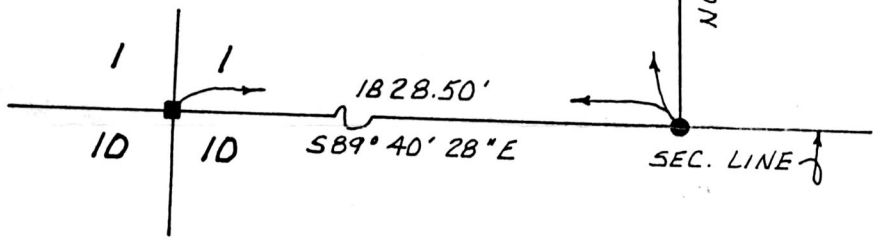


- SCALE: 1" = 100'
- STONE FOUND
 - IRON PIN FOUND
 - 5/8" REBAR WITH I.D. CAP SET. I.D. CAP MARKED "BAKER 6938."

REFERENCES:

- DEED VOL. 210 PAGE 441
- DEED VOL. 236 PAGE 745
- DEED VOL. 255 PAGE 553
- DEED VOL. 235 PAGE 244
- PLAT VOL. 2 PAGE 83
- PLAT VOL. 5 PAGE 95
- PLAT VOL. 10 PAGE 691
- PLAT VOL. 10 PAGE 280
- PLAT VOL. 10 PAGE 745

BEARINGS FROM PLAT VOL. 12 PAGE 933.



I CERTIFY THIS SURVEY TO BE CORRECT TO THE BEST OF MY KNOWLEDGE.

Donald C. Baker
DONALD C. BAKER P.S. 6938
5958 T.R. 322
MILLERSBURG, OHIO 44654
PH: (216) 674-4788
SEPTEMBER 10, 1993

184199

INDEXED

Rec'd: OCT 07 1993 AT 2:26 O'CLOCK P.M.
Recorded: OCT 08 1993 Holmes Co. Ohio Fee \$20.00
Plat Vol. 14 Pg. 318 Recorder *Sally Miller*
Deed vol. 261 ps 847 R.R.

47593-BEC

PLAT APPROVED 10/5/93 B