

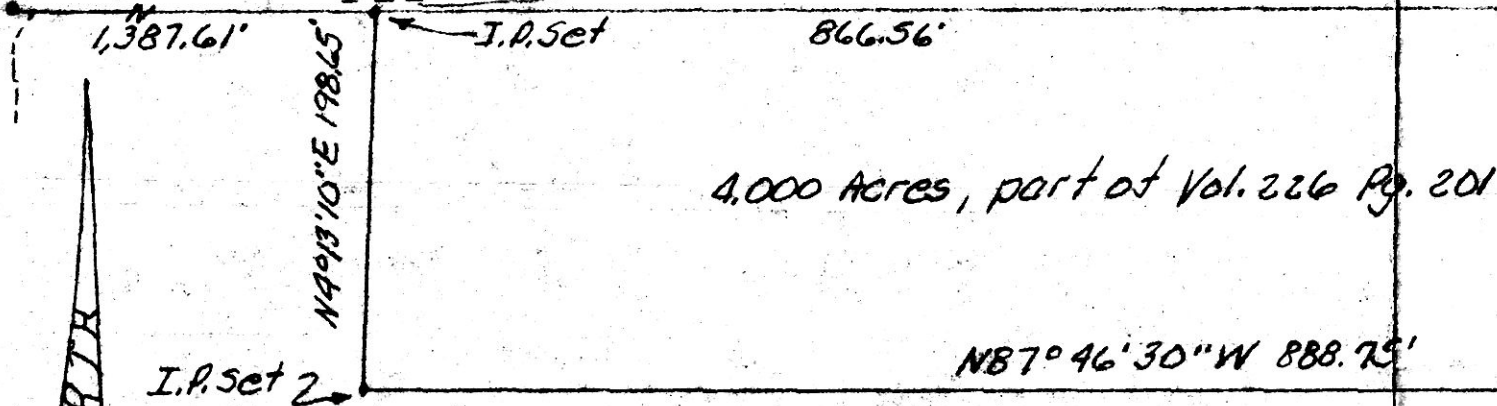
182997

Sec. 32, T17N, R14W

I. Pin set at intersection of two fences at N.W. crnr of N.W. 1/4 Sec. 5, T17N R14W  
12' to fence line

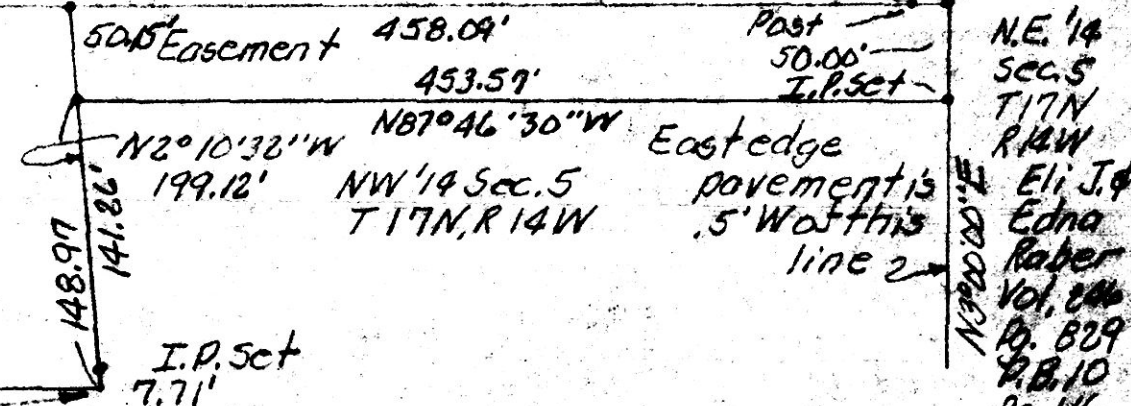
587°46'30"E 2,712.26' total I.P. set  
9' to fence line fence line

I. Pin set at N.E. crnr of N.W. 1/4 of Sec. 5, T17N R14W



4.000 Acres, part of Vol. 226 Pg. 201

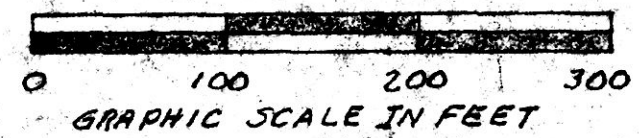
Abe D. & Mary Raber  
Vol. 226 Pg. 201



This point is in small stream.

N.E. 1/4 Sec. 5 T17N R14W  
Eli J. & Edna Raber  
Vol. 206 Pg. 829 P.B. 10 Pg. 116

SPLIT APPROVED #930118



This 4.000 acre parcel is not approved for any use that generates wastewater.

Sanitarian *[Signature]* Date 7/29/93

INDEXED

182997



PLAT OF A SURVEY FOR ABE D. RABER known as part of the N.W. 1/4 Sec. 5, T17N, R14W of Ripley Twp., Hol. Co., Ohio  
Robert L. Kasner P.S. 5193 P.E. 28820 5/11/93

Rec'd JUL 15 1993 AT 10:30 O'CLOCK A.M.  
Recorded JUL 16 1993 Holmes Co. Ohio Fee \$20.00  
Vol. Plat Vol. 14 Pg. 254  
Deed vol. 260 pg 736 *[Signature]* Laurel

PLAT APPROVED 7/14/93