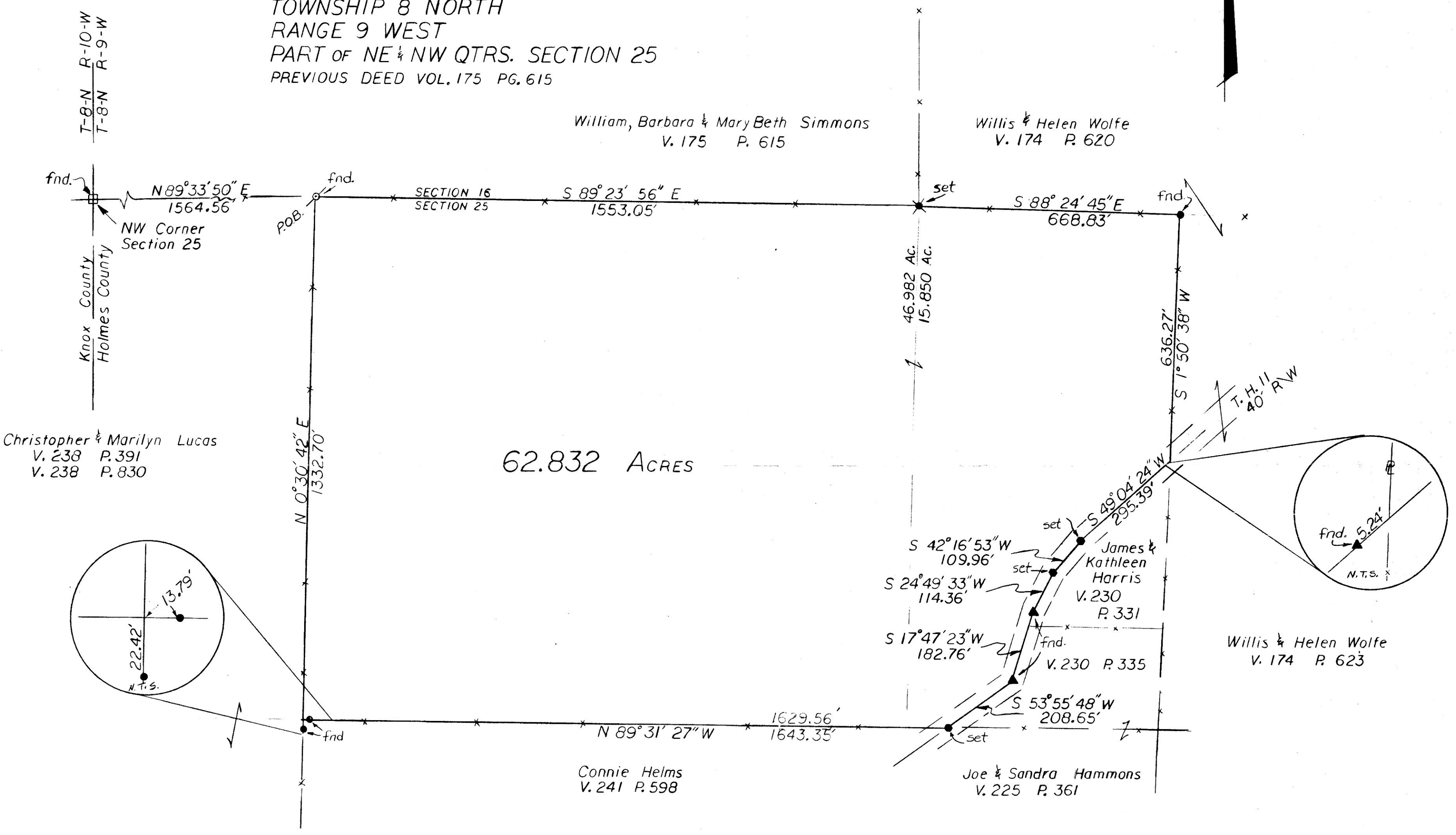


STATE OF OHIO
 HOLMES COUNTY
 RICHLAND TOWNSHIP
 TOWNSHIP 8 NORTH
 RANGE 9 WEST
 PART OF NE 1/4 NW QTRS. SECTION 25
 PREVIOUS DEED VOL. 175 PG. 615



Based on the south line of Section 16
 as called in V. 238 P. 391 as
 bearing N 89° 33' 50" E.



Christopher & Marilyn Lucas
 V. 238 P. 391
 V. 238 P. 830

William, Barbara & Mary Beth Simmons
 V. 175 P. 615

Willis & Helen Wolfe
 V. 174 P. 620

62.832 ACRES

James & Kathleen Harris
 V. 230 P. 331

Willis & Helen Wolfe
 V. 174 P. 623

Connie Helms
 V. 241 P. 598

Joe & Sandra Hammons
 V. 225 P. 361

I hereby certify this plat to be the true and
 correct to the best of my knowledge.

Paul J. Boeshart
 PAUL J. BOESHART P.S.
 REG. NO. S-6512



SEAL

- = STONE FOUND
- = IRON PIN FOUND
- ⊗ = IRON PIN SET 5/8" x 32"
- = SPIKE SET
- ▲ = RR SPIKE FOUND

162773
 Rec'd JUN 30 1993 AT 11:44 O'CLOCK A.M.
 Recorded JUL 01 1993 Holmes Co. Ohio Fees \$21.60
 Plat Vol. 14 Pg. 246 Recorder Sally Miller
 6/25/93

<h2>SIMMONS FARM</h2>		
<h3>62.832 ACRES</h3>		
0 100 200 	DR. BY: <i>CPB</i>	DATE: 2-26-90
Scale: 1" = 200'	APPR. BY:	DWG. NO.: 90-105