

MECHANIC TOWNSHIP
N.E. QTR. SECTION 8 (FRAC.)

2ND. QTR., LOT 4
T-8N R-6W
HOLMES COUNTY, OHIO



SCALE: 1" = 200'

- IRON PIN FOUND
- 5/8" REBAR WITH I.D. CAP SET I.D. CAP MARKED "BAKER 6938"

REFERENCES:

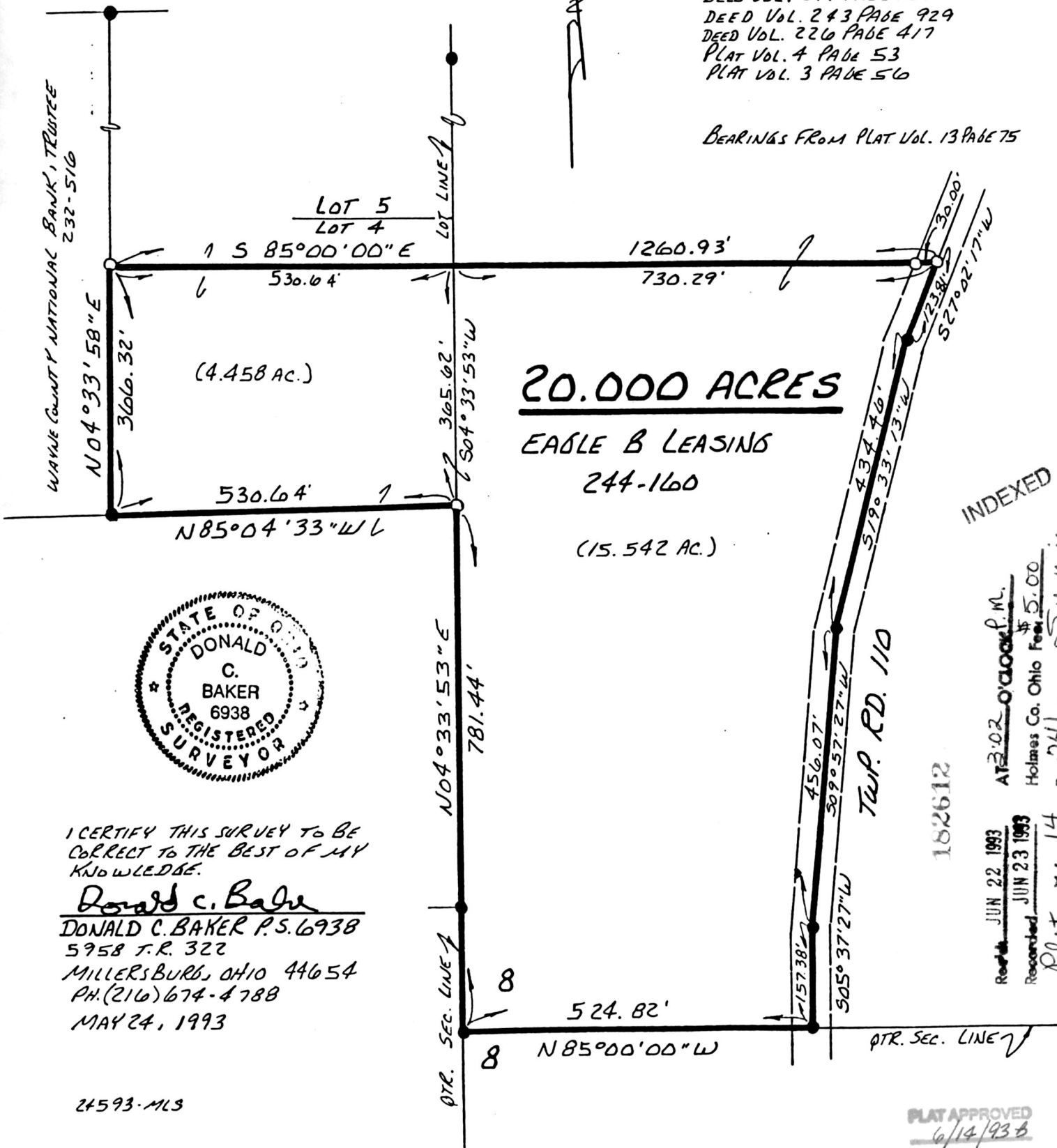
- DEED VOL. 244 PAGE 160
- DEED VOL. 243 PAGE 929
- DEED VOL. 226 PAGE 417
- PLAT VOL. 4 PAGE 53
- PLAT VOL. 3 PAGE 56

BEARINGS FROM PLAT VOL. 13 PAGE 75

VOL

14 PAGE 241

WAYNE COUNTY NATIONAL BANK, TRUSTEE
232-516

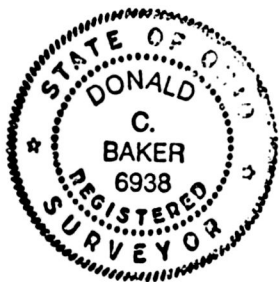


20.000 ACRES

EAGLE B LEASING

244-160

(15.542 AC.)



I CERTIFY THIS SURVEY TO BE CORRECT TO THE BEST OF MY KNOWLEDGE.

Donald C. Baker

DONALD C. BAKER P.S. 6938
5958 T.R. 322
MILLERSBURG, OHIO 44654
PH. (216) 674-4788
MAY 24, 1993

24593-MLS

INDEXED

Recorded JUN 22 1993 AT 3:02 O'CLOCK P.M.
 Recorded JUN 23 1993 Holmes Co. Ohio Fees \$5.00
 Plat Vol. 14 Pg. 241 Recorded Sally Muller
 Deed vol. 260 Pg. 409
 D.M. Miller

182612

TWP. RD. 110

PLAT APPROVED
6/14/93 B