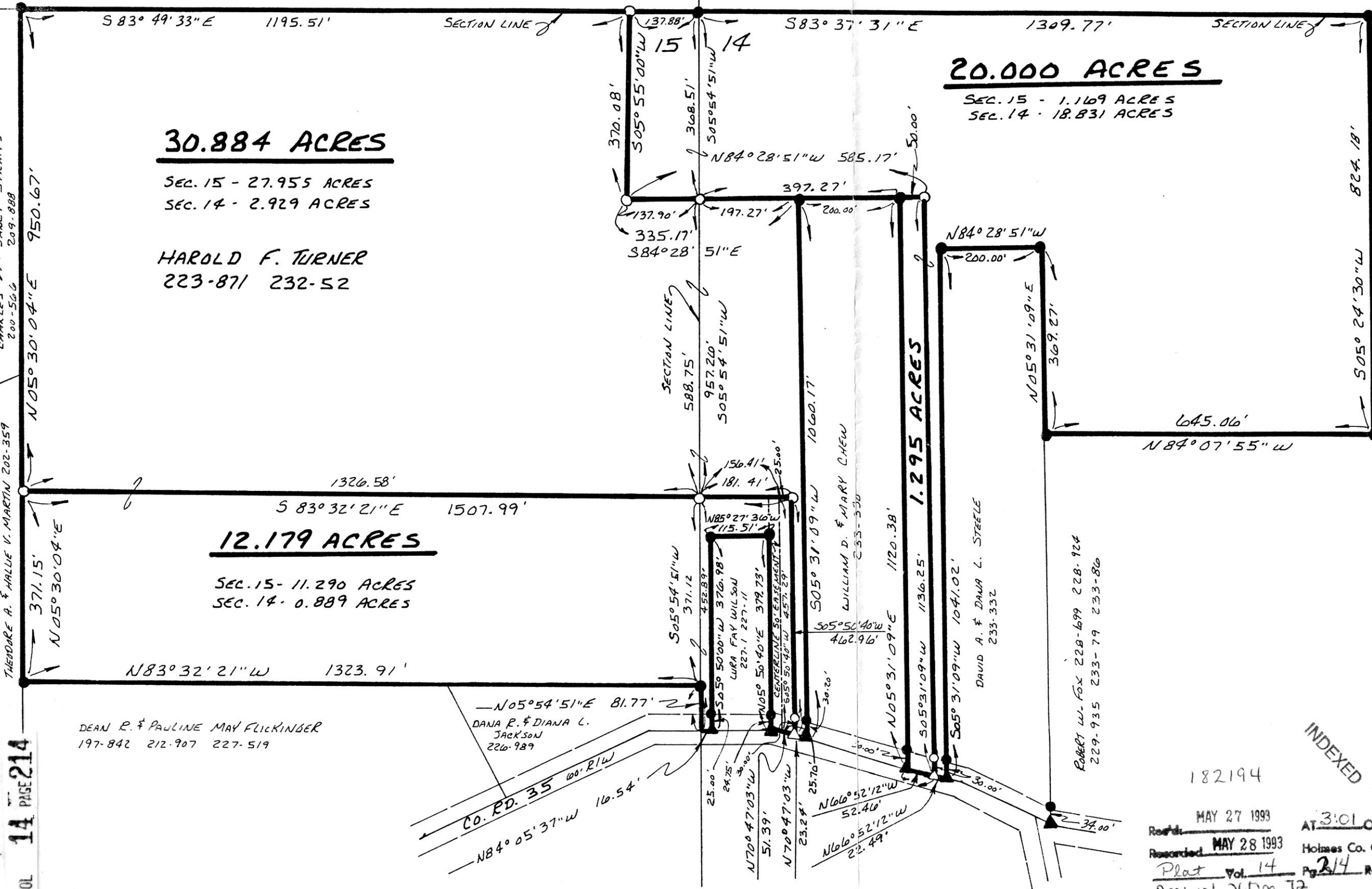
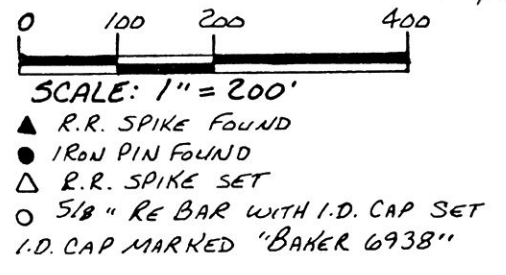


REFERENCES:

- PLAT VOL. 9 PAGE 7
- PLAT VOL. 10 PAGE 390
- PLAT VOL. 4 PAGE 63
- PLAT VOL. 11 PAGE 102
- PLAT VOL. 10 PAGE 648
- DEED VOL. 232 PAGE 52
- DEED VOL. 233 PAGE 330
- DEED VOL. 233 PAGE 332
- BEARINGS FROM PLAT VOL. 10 PAGE 648

KILLBUCK TOWNSHIP
 N.W. QTR. SECTION 14 &
 N.E. QTR. SECTION 15
 T-8N R-7W
 HOLMES COUNTY, OHIO



20.000 ACRES

SEC. 15 - 1.169 ACRES
SEC. 14 - 18.831 ACRES

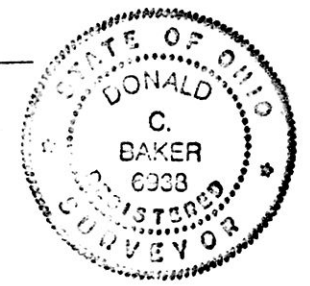
30.884 ACRES

SEC. 15 - 27.955 ACRES
SEC. 14 - 2.929 ACRES

HAROLD F. TURNER
223-871 232-52

12.179 ACRES

SEC. 15 - 11.290 ACRES
SEC. 14 - 0.889 ACRES



I CERTIFY THIS SURVEY TO BE CORRECT TO THE BEST OF MY KNOWLEDGE.

Donald C. Baker
DONALD C. BAKER P.S. 6938

5958 T.R. 322
MILLERSBURG, OHIO 44654
PH. (216) 674-4788

DECEMBER 8, 1992
(REVISED 5-11-93 ADDED EASEMENT)

INDEXED

182194

Recorded MAY 27 1993 AT 3:01 O'CLOCK P.M. 51792-MLS
 Recorded MAY 28 1993 Holmes Co. Ohio Fee #9.35
 Plat Vol. 14 Pg. 214 Recorder Sally Miller
 Deed vol. 260 Pg. 72

VOL 14 PAGE 214