

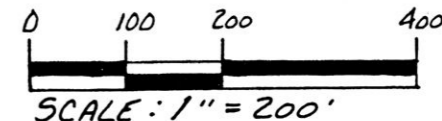
J.J.Y. CONSTRUCTION INC.  
240-269

PAINT TOWNSHIP  
S.W. QTR. SECTION 27  
T-15N R-11W  
HOLMES COUNTY, OHIO

This 2.562 acre parcel is approved for transfer only.

*John D. [Signature]* 12/23/92  
Sanitarian Date

SPLIT APPROVED  
# 930002



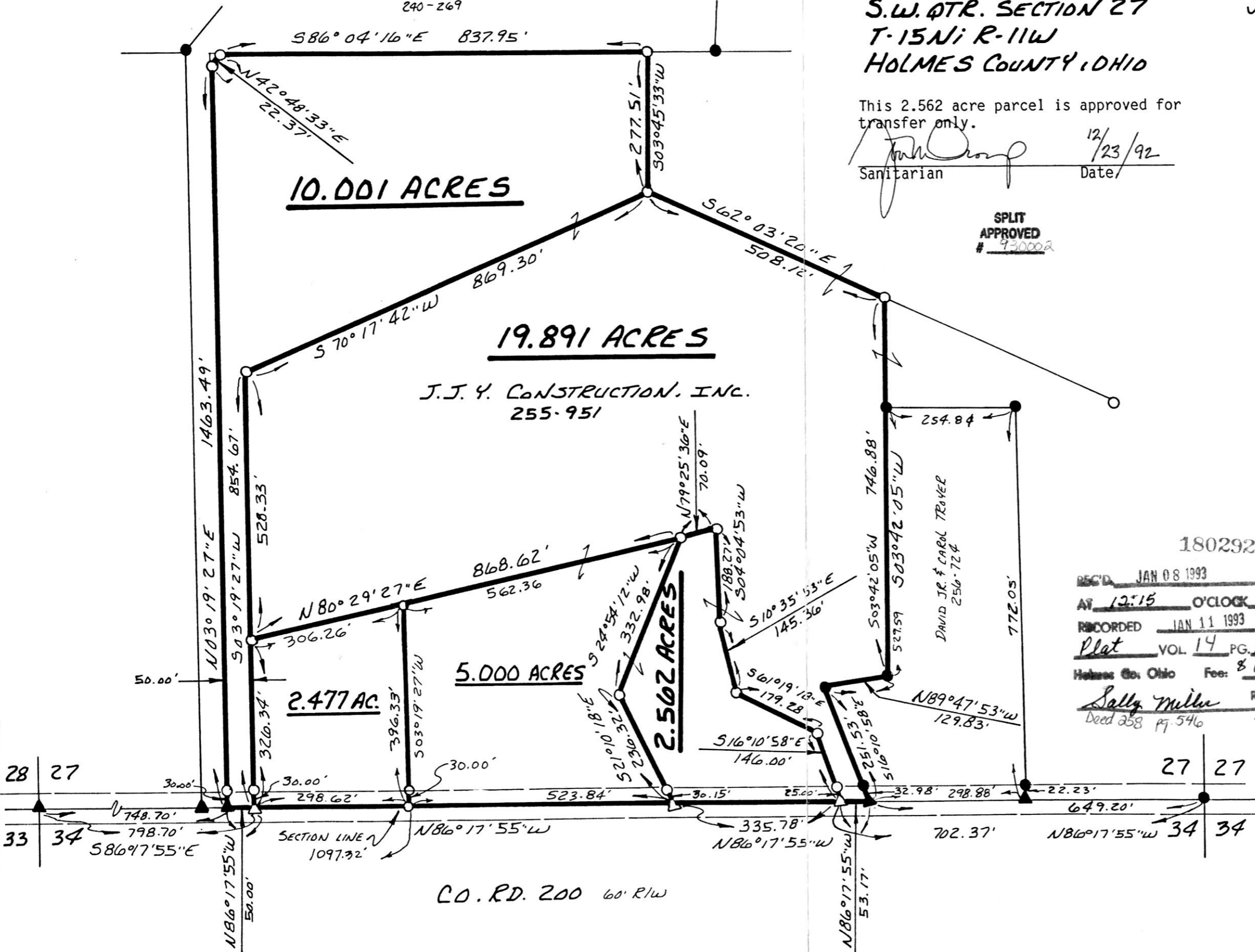
SCALE: 1" = 200'

- ▲ R.R. SPIKE FOUND
- IRON PIN FOUND
- △ R.R. SPIKE SET
- 5/8" RE BAR WITH I.D. CAP SET
- I.D. CAP MARKED "BAKER 6938"

REFERENCES:

- PLAT VOL. 10 PAGE 92
- PLAT VOL. 13 PAGE 22
- PLAT VOL. 13 PAGE 73
- PLAT VOL. 10 PAGE 458
- PLAT VOL. 12 PAGE 82
- PLAT VOL. 9 PAGE 216
- DEED VOL. 256 PAGE 724
- PLAT VOL. 14 PAGE 16
- DEED VOL. 240 PAGE 269
- DEED VOL. 240 PAGE 727
- DEED VOL. 241 PAGE 287

BEARINGS FROM DEED VOL. 255 PAGE 951



180292

REC'D. JAN 08 1993  
 AT 12:15 O'CLOCK PM  
 RECORDED JAN 11 1993  
 Plat VOL 14 PG 128  
 Holmes Co. Ohio Fee: \$ 9.35  
*Sally Miller* Recorder  
 Deed 258 pg. 546 Journal



I CERTIFY THIS SURVEY TO BE CORRECT TO THE BEST OF MY KNOWLEDGE.

*Donald C. Baker*  
DONALD C. BAKER P.S. 6938  
5958 T.R. 322  
MILLERSBURG, OHIO 44654  
PH. (216) 674-4788

NOVEMBER 12, 1992

(Rev. Nov. 25, 1992)  
ADDED 2.477 AC. LOT

49592-MCS

PLAT APPROVED  
11/23/92

VOL 14 PAGE 128