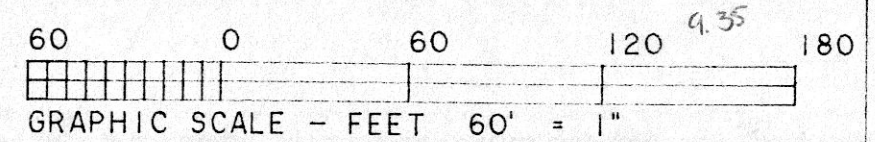
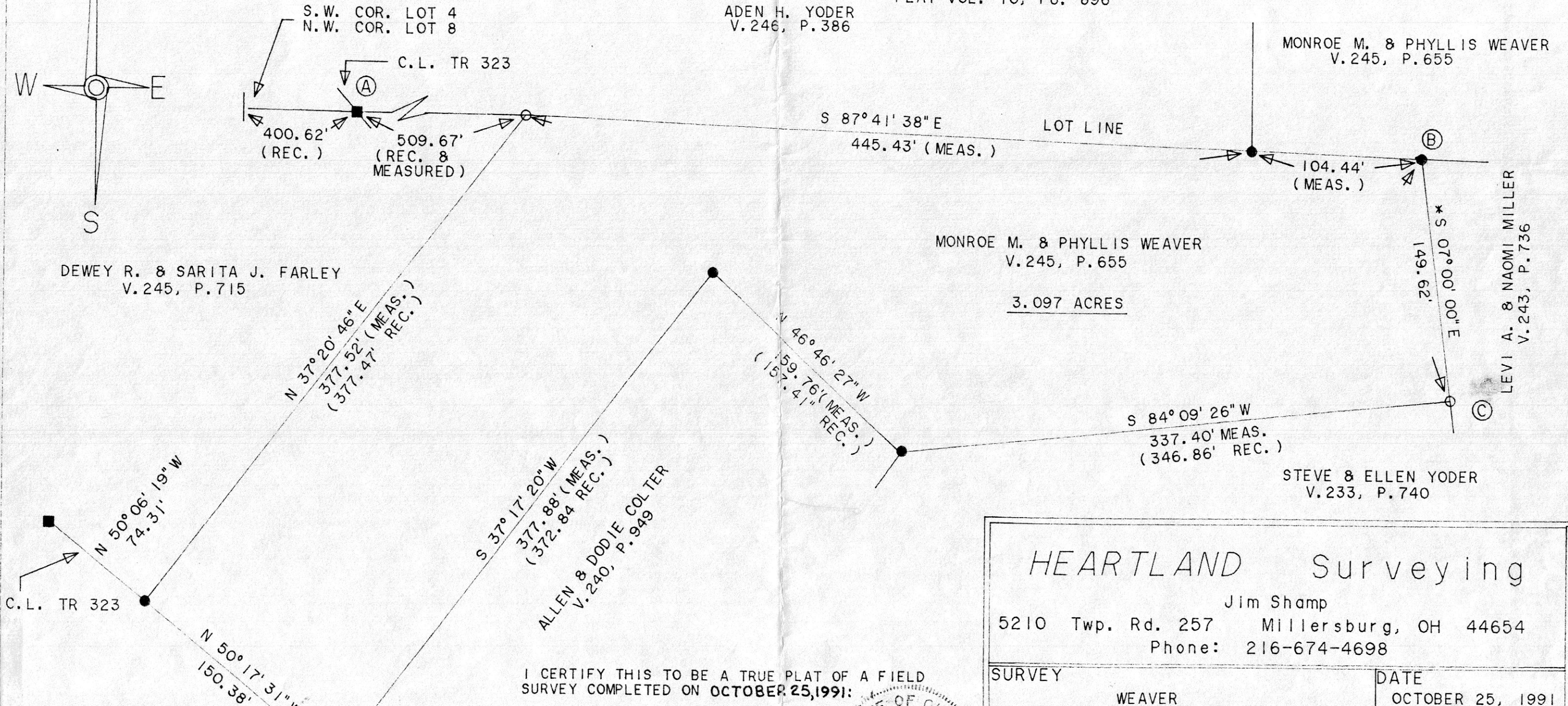
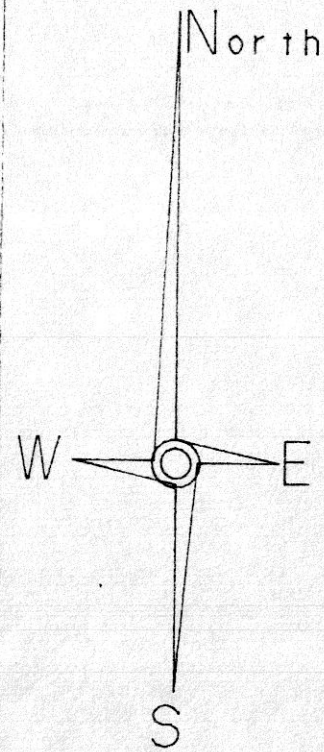


NOTE: RECORD DISTANCE FROM POINT Ⓐ TO POINT Ⓔ = 1062.67'  
 MEASURED DISTANCE = 1059.54'  
 RECORD DISTANCE FROM POINT Ⓔ TO POINT Ⓒ = 247.86'  
 MEASURED DISTANCE = 149.62'

LEGEND:  
 ● = I.P. FD.  
 □ = RAILROAD SPIKE FD.  
 ○ = I.P. SET (5/8" X 30" REBAR W/PLASTIC CAP MARKED "JIM SHAMP 6088")

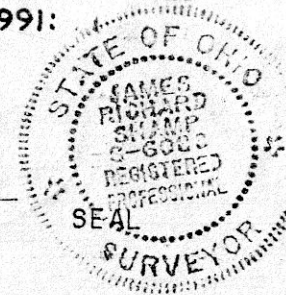


\* BEARINGS ESTABLISHED FROM PLAT VOL. 10, PG. 896



I CERTIFY THIS TO BE A TRUE PLAT OF A FIELD SURVEY COMPLETED ON OCTOBER 25, 1991:

*Jim Shamp*  
 JIM SHAMP, REG. SUR. NO. S-6088



<b>HEARTLAND Surveying</b>			
Jim Shamp 5210 Twp. Rd. 257 Millersburg, OH 44654 Phone: 216-674-4698			
SURVEY		DATE	
WEAVER		OCTOBER 25, 1991	
STATE	COUNTY	TOWNSHIP	RANGE
OHIO	HOLMES	HARDY	7 WEST
TOWNSHIP			
9 NORTH	1ST QUARTER		LOT 8

PLAT APPROVED  
 11/25/92

VOL 14 PAGE 96

Rec'd. DEC 03 1992 AT 9:14 o'clock am  
 Recorded DEC 04 1992 Holmes Co. Ohio Fees 9.35  
 Plat Vol. 14 Pg 96 Recorder Mary Ellen Signist  
 Deed vol 258 ps 68 sam

179813

INDEXED