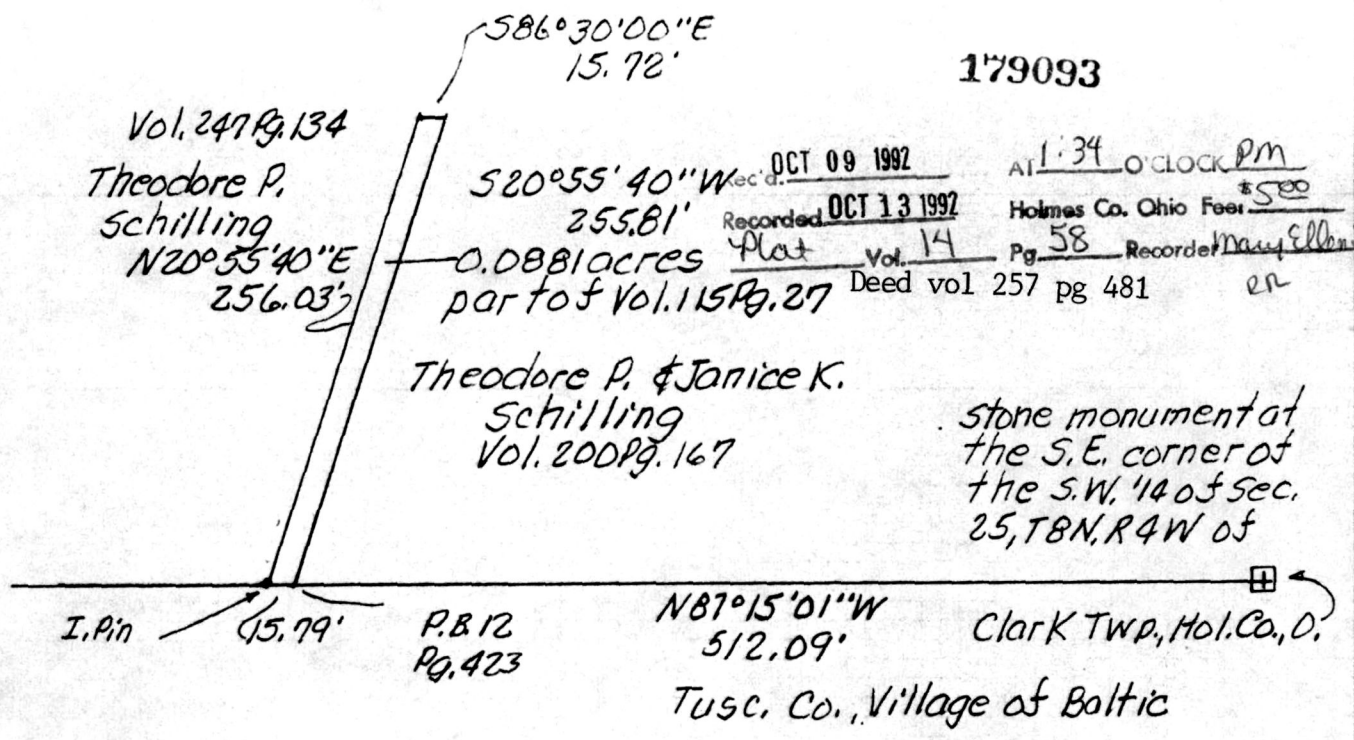


pt 500

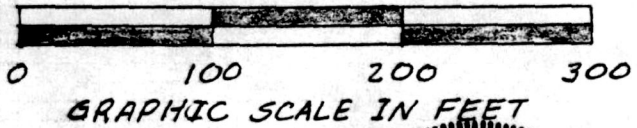
NORTH



179093

Vol. 247 Pg. 134
Theodore P.
Schilling
N20°55'40"E
256.03'

OCT 09 1992
Recorded OCT 13 1992
Plat Vol. 14 Pg. 58
Deed vol 257 pg 481
At 1:34 O'clock PM
Holmes Co. Ohio Fees \$500
Recorded Mary Ellen Sigrist



Known as part of the S.W.
1/4 of Sec. 25, T8N, R4W of
Clark Twp., Hol. Co., Ohio
Village of Baltic

Robert L. Kasner P.S. 5193
P.E. 28820
9/8/92
INDEXED
10-8-92