

# WHISTLING HILLS ALLOTMENT NO. 1

PRAIRIE TOWNSHIP  
S.W. QTR. SECTION 26  
T. 14N; R. 13W  
HOLMES COUNTY, OHIO



- SCALE: 1"=100'
- IRON PIN FOUND
  - △ R.R. SPIKE SET
  - 5/8" REBAR WITH I.D. CAP SET
  - I.D. CAP MARKED "BAKER 6938"

### PREPARED BY:

DONALD C. BAKER SURVEYING  
5958 T. R. 322  
MILLERSBURG OHIO 44654  
PH 216/674-4788

### REFERENCES:

PLAT VOL. 10 PAGE 563  
PLAT VOL. 10 PAGE 539  
DEED VOL. 230 PAGE 811  
DEED VOL. 231 PAGE 146

BEARINGS ASSUMED

### GRANTOR

WILMA SHETLER  
VOL. 255 Pg. 652

### RESTRICTIVE COVENANTS

1. THESE LOTS SHALL BE USED EXCLUSIVELY FOR SINGLE FAMILY RESIDENTIAL PURPOSES.
2. THE DWELLING HOUSE SHALL HAVE A MINIMUM OF 1200 SQUARE FEET INTERIOR LIVING AREA.
3. THE LOTS HEREIN SHALL NOT BE USED FOR ANY PURPOSE OR IN SUCH A WAY WHICH MAY ENDANGER THE HEALTH OR UNREASONABLY DISTURB THE PEACEFUL OCCUPANCY OF AN ADJACENT OR NEIGHBORING PREMISES.

### CERTIFICATE OF OWNERSHIP AND DEDICATION

WE HEREBY CERTIFY THAT WE ARE THE OWNERS OF THE PROPERTY SHOWN AND DESCRIBED HEREON AND THAT WE HEREBY ADAPT THIS PLAN OF SUBDIVISION WITH OUR FREE CONSENT, ESTABLISH THE MINIMUM BUILDING RESTRICTION LINES, AND DEDICATE ALL STREETS, ALLEYS, WALKS, PARKS, AND OTHER OPEN SPACES TO PUBLIC OR PRIVATE USE AS NOTED.

DATE 6-5-1992, 1992

Wilma Shetler  
Mary Shetler

CERTIFICATE OF THE APPROVAL OF WATER AND SEWERAGE SYSTEMS  
I HEREBY CERTIFY THAT THE WATER SUPPLY AND SEWAGE DISPOSAL UTILITY SYSTEMS INSTALLED, OR PROPOSED FOR INSTALLATION, IN THE SUBDIVISION PLAT ENTITLED: WHISTLING HILLS ALLOTMENT NO. 1 FULLY MEET THE REQUIREMENTS OF THE HOLMES COUNTY BOARD OF HEALTH AND THE OHIO STATE HEALTH DEPARTMENT, AND ARE HEREBY APPROVED AS SHOWN.

DATE July 10, 1992

James J. Miller  
COUNTY HEALTH COMMISSIONER

### CERTIFICATE OF APPROVAL BY THE HOLMES SOIL AND WATER CONSERVATION DISTRICT

I HEREBY CERTIFY THAT I HAVE APPROVED THE SUBDIVISION PLAT AND/OR AGREEMENTS OR PROVISIONS FOR SEDIMENTATION AND EROSION CONTROL AS STATED OR SHOWN HEREON.

DATE 6/8/92, 1992

Robert C. Collett  
HOLMES SOIL AND WATER CONSERVATION DISTRICT

### CERTIFICATE OF APPROVAL BY THE COUNTY COMMISSIONERS

I HEREBY CERTIFY THAT THE HOLMES COUNTY COMMISSIONERS HAVE APPROVED THE SUBDIVISION PLAT AS SHOWN HEREON.

DATE 7/13, 1992

Robert Lee  
CHAIRMAN, COUNTY COMMISSIONERS

### CERTIFICATE OF THE APPROVAL OF PLAT AND ENGINEERING DETAILS

I HEREBY CERTIFY THAT I HAVE APPROVED THE PLAT AND ENGINEERING DETAILS OF THE PROPOSED ROADS, SEWER AND WATER SYSTEMS AND OTHER PROPOSED PUBLIC FACILITIES IN THE SUBDIVISION PLAT AS SHOWN HEREON.

DATE 6/23, 1992

Robert R. Kasner  
COUNTY ENGINEER

### CERTIFICATE OF APPROVAL FOR RECORDING

I HEREBY CERTIFY THAT THE SUBDIVISION PLAT SHOWN HEREON HAS BEEN FOUND TO COMPLY WITH THE SUBDIVISION REGULATIONS FOR HOLMES COUNTY, OHIO, WITH THE EXCEPTION OF SUCH VARIANCES, IF ANY, AS ARE NOTED IN THE MINUTES OF THE HOLMES COUNTY REGIONAL PLANNING COMMISSION AND THAT IT HAS BEEN APPROVED FOR RECORDING IN THE OFFICE OF THE COUNTY RECORDER.

DATE July 13, 1992

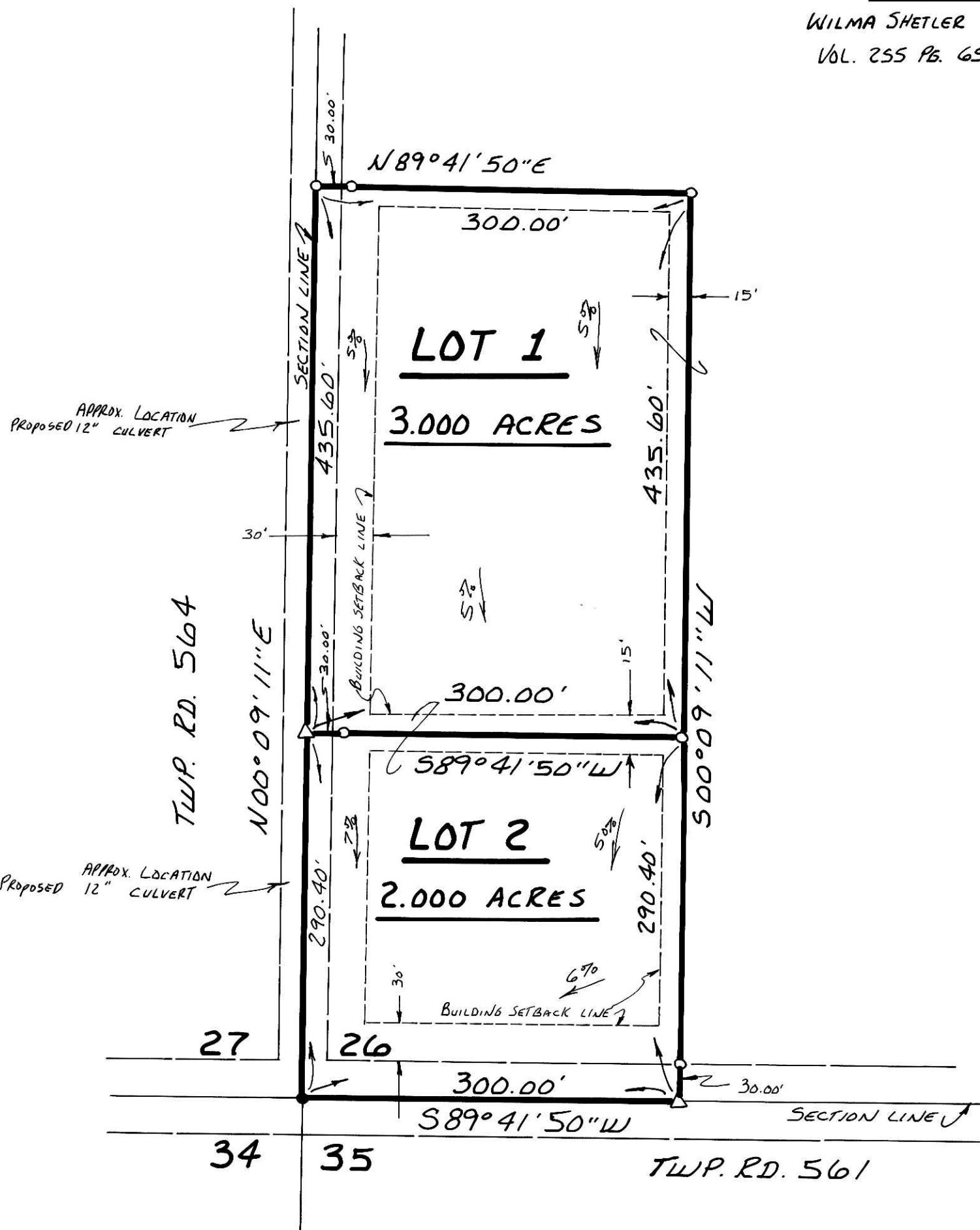
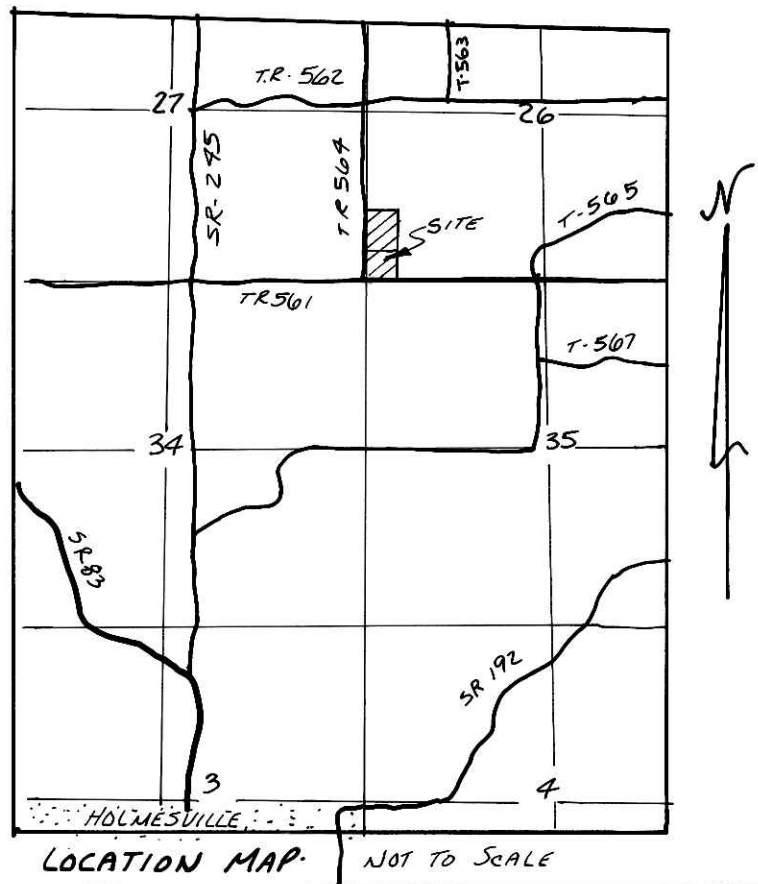
Thomas R. Morganti  
HOLMES COUNTY REGIONAL PLANNING COMMISSION

### CERTIFICATE OF ACCURACY

I HEREBY CERTIFY THAT THE PLAN SHOWN AND DESCRIBED HEREON IS A TRUE AND CORRECT SURVEY TO THE ACCURACY REQUIRED BY THE HOLMES COUNTY REGIONAL PLANNING COMMISSION AND THAT THE MONUMENTS HAVE BEEN PLACED AS SHOWN HEREON.

DATE MAY 6, 1992

Donald C. Baker  
DONALD C. BAKER P.S. 6938



AREA IN LOTS	5.000 ACRES
AREA IN ROADWAY DEDICATION	0.000 ACRES
TOTAL AREA IN ALLOTMENT	5.000 ACRES

TRANSFER NOT NECESSARY

DATE August 16, 1992  
AUDITOR Donald C. Baker

178200

REC'D. AUG 11 1992  
AT 10:32 O'CLOCK, AM  
RECORDED AUG 12 1992  
Plat VOL 13 PG 164  
Released to: Ohio Fee 21.60  
Mary Ellen Signst Recorder

