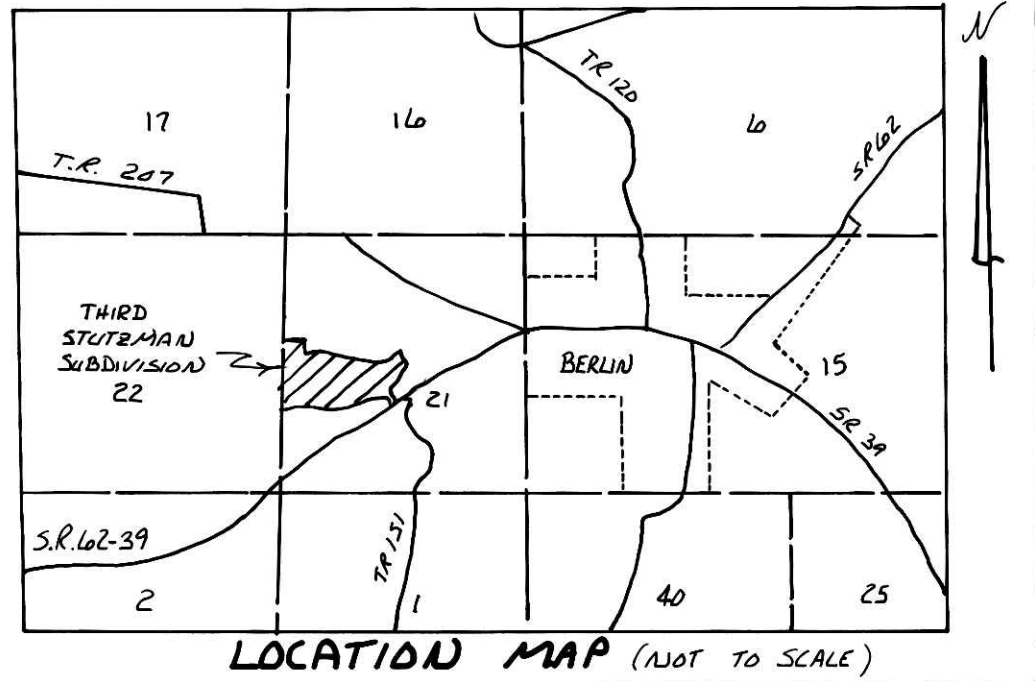


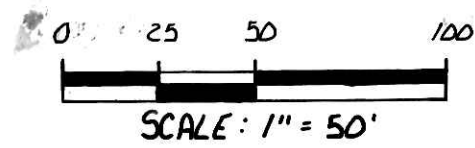
177004

REPLAT OF LOT 22 & PART OF LOT 23

THIRD STUTZMAN SUBDIVISION PLAT VOL. 2A PAGE 169 LOT 21, THE FIRST QUARTER: T-9N ; R-6W BERLIN TOWNSHIP, HOLMES COUNTY, OHIO



JOHANNES E. & DONNA MARIE SCHLABACH
P.O. BOX 307
BERLIN, OHIO 44610



- CONCRETE MONUMENT FOUND
- IRON PIN FOUND
- 5/8" RE BAR WITH I.D. CAP SET I.D. CAP MARKED "BAKER 6938"

REFERENCES:

- PLAT VOL. 10 PAGE B15
- PLAT VOL. 9 PAGE 90
- PLAT VOL. 8 PAGE 771
- PLAT VOL. 7 PAGE 463
- PLAT VOL. 11 PAGE 59

BEARINGS FROM PLAT VOL. 2A
PAGE 169.

PREPARED BY: DONALD C. BAKER SURVEYING
5958 T.R. 322
MILLERSBURG, OHIO 44654
PH. (216) 674-4788

LOT 29
(REPLATED LOT 21 OF THE
THIRD STUTZMAN SUBDIVISION)



WE HEREBY CERTIFY THAT WE ARE THE OWNERS OF THE PROPERTY SHOWN AND DESCRIBED HEREON AND THAT WE HEREBY ADOPT THIS PLAN OF SUBDIVISION WITH OUR FREE CONSENT, ESTABLISH THE MINIMUM BUILDING RESTRICTIONS LINES, AND DEDICATE ALL STREETS, ALLEYS, WALKS, PARKS, AND OTHER OPEN SPACE TO PUBLIC OR PRIVATE USE AS NOTED.

5-18 1992

Johannes Schlabach
Donna Marie Schlabach

I HEREBY CERTIFY THAT STREETS, UTILITIES AND OTHER REQUIRED IMPROVEMENTS HAVE BEEN INSTALLED IN AN ACCEPTABLE MANNER ACCORDING TO COUNTY SPECIFICATION IN THE SUBDIVISION ENTITLED THIRD STUTZMAN SUBDIVISION.

May 21, 1992

Robert L. Kasner
HOLMES COUNTY ENGINEER

I HEREBY CERTIFY THAT I HAVE APPROVED THE SUBDIVISION PLAT AND/OR AGREEMENTS OR PROVISIONS FOR SEDIMENTATION AND EROSION CONTROL AS STATED OR SHOWN HEREON.

May 21, 1992

Mark German
HOLMES SOIL & WATER CONSERVATION DISTRICT

I HEREBY CERTIFY THAT THE HOLMES COUNTY COMMISSIONERS HAVE APPROVED THE SUBDIVISION PLAT AS SHOWN HEREON.

5/22 1992

Robert Lee
CHAIRMAN, HOLMES COUNTY COMMISSIONERS

I HEREBY CERTIFY THAT THE SUBDIVISION PLAT SHOWN HEREON HAS BEEN FOUND TO COMPLY WITH THE SUBDIVISION REGULATIONS FOR HOLMES COUNTY, OHIO WITH THE EXCEPTION OF SUCH VARIANCES IF ANY, AS ARE NOTED IN THE MINUTES OF THE HOLMES COUNTY REGIONAL PLANNING COMMISSION AND THAT IT HAS BEEN APPROVED FOR RECORDING IN THE OFFICE OF THE COUNTY RECORDER.

5/27 1992

Thomas R. Maganti
CHAIRMAN, HOLMES COUNTY REGIONAL PLANNING COMMISSION

I HEREBY CERTIFY THAT THE WATER SUPPLY AND SEWAGE DISPOSAL PROPOSED FOR INSTALLATION FULLY MEETS THE REQUIREMENTS OF THE HOLMES COUNTY BOARD OF HEALTH AND THE OHIO STATE HEALTH DEPARTMENT, AND ARE HEREBY APPROVED.

May 26, 1992

James J. ...
COUNTY HEALTH COMMISSIONER

FILED FOR RECORD THIS 27th DAY OF May, 1992 AT 2:45 P.M.

RECORDED THIS 28th DAY OF May, 1992 IN PLAT BOOK NO. 13, PAGE 160.

Mary Ellen Signot
HOLMES COUNTY RECORDER

I HEREBY CERTIFY THAT THE PLAN SHOWN AND DESCRIBED HEREON IS A TRUE AND CORRECT SURVEY TO THE ACCURACY REQUIRED BY THE HOLMES COUNTY REGIONAL PLANNING COMMISSION AND THAT THE MONUMENTS HAVE BEEN PLACED AS SHOWN HEREON.

MAY 12, 1992

Donald C. Baker
REGISTERED SURVEYOR #6938

LOTS IN THE DESCRIBED SUBDIVISION ARE SUBJECT TO THE RESTRICTIONS AND COVENANTS OF THE THIRD STUTZMAN SUBDIVISION. RECORDED IN PLAT VOL. 2A PAGE 169

TRANSFER NOT NECESSARY

DATE *May 27, 1992*
AUDITOR *Edward J. ...*

177004

Rec'd. MAY 27 1992 AT 2:45 o'clock pm
Recorded MAY 28 1992 Holmes Co. Ohio Fees 21.00
Plat Vol. 13 Pg. 160 Recorder: Mary Ellen Signot