

170611

EARL R. DONAKER PROFESSIONAL SURVEYOR

tel: (614) 623-0993
1-800-842-3264

THIS PROPERTY IS SUBJECT TO ALL EASEMENTS, RIGHTS-OF-WAY, OR RESTRICTIONS, WHETHER RECORDED OR IMPLIED.

727 Cambridge Road
Coshocton, Ohio 43812

SCALE: 1" = 30'
ORIGINAL PLAT 11X17

PERTINENT DOCUMENTS:
TAX MAP
DEEDS: 241/833, 187/545,
189/162, 227/725,

PB. 3, PG. 60-B
PB. 3, PG. 87-B
PB. 3, PG. 88-B
PB. 5, PG. 163
P.B. 2A, PG. 143

SURVEYS BY: WILLIAM
SELLNER

BEARINGS ARE BASED ON
PB. 3, PG. 88-B

- = ALL 5/8" STEEL PINS SET ARE 30" LONG
- = CONCRETE MONUMENT FOUND
- = PIN FOUND AS MARKED

S.W. 1/4 SECTION 6

LESLIE E. & MABEL L. MULLET
189/162

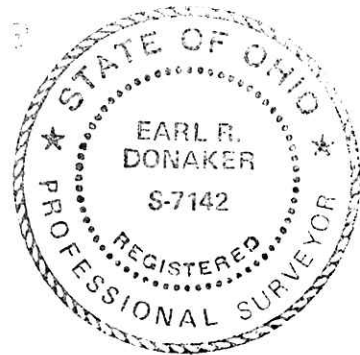
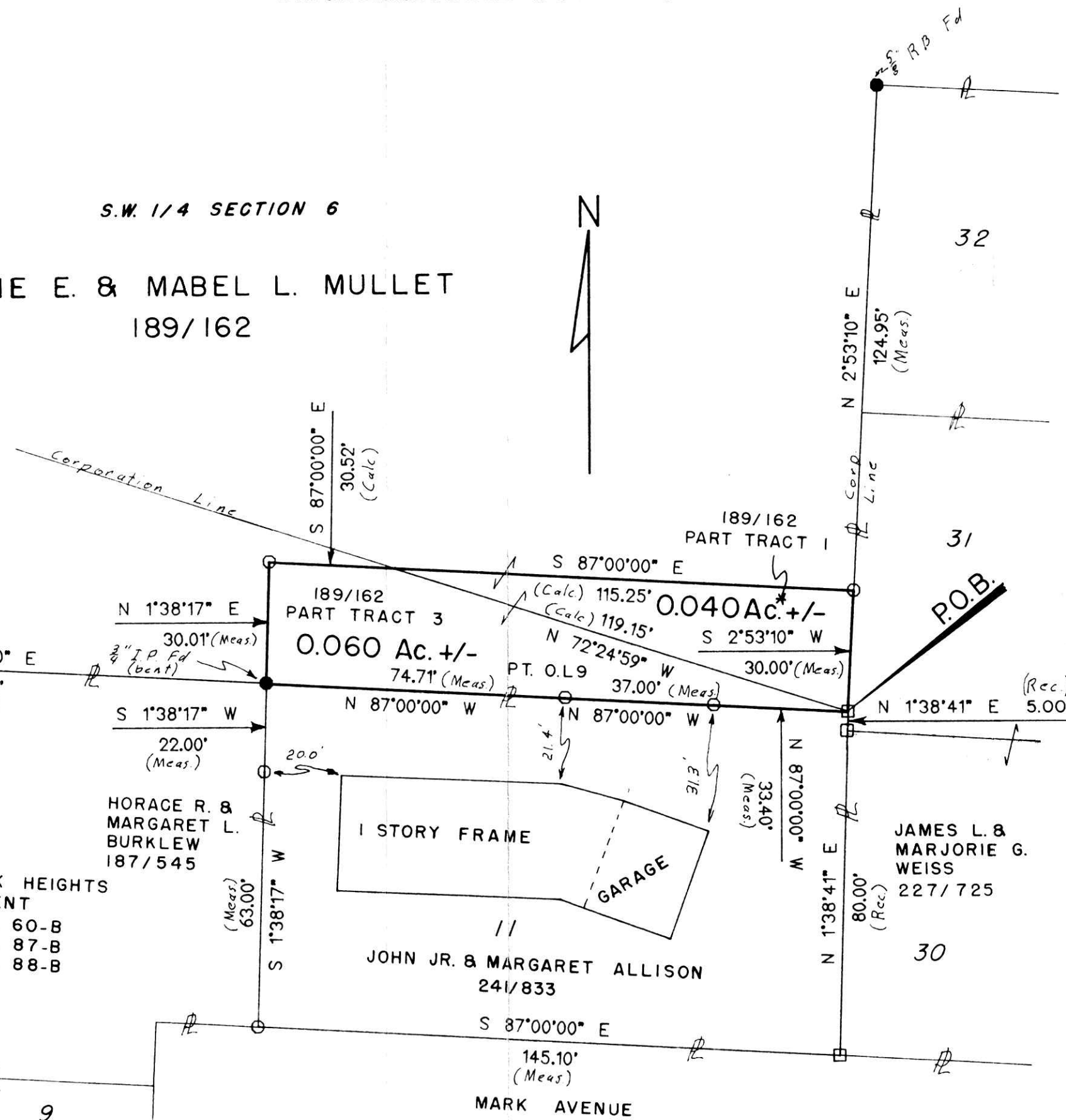
**SPLIT
APPROVED**
910002

This 0.040 acre plat not approved for any use that generates wastewater.

[Signature] 12/27/90
Sanitarian Date

This 0.060 acre plat not approved for any use that generates wastewater.

[Signature] 12/27/90
Sanitarian Date



10
KILLBUCK HEIGHTS
ALLOTMENT
P.B. 3, PG. 60-B
P.B. 3, PG. 87-B
P.B. 3, PG. 88-B

HORACE R. &
MARGARET L.
BURKLEW
187/545

11
JOHN JR. & MARGARET ALLISON
241/833

JAMES L. &
MARJORIE G.
WEISS
227/725

Deed Vol. 249 Page 995

KILLBUCK HEIGHTS
INC., II ALLOTMENT
P.B. 5, PG. 163
P.B. 2A, PG. 143

ACRES+/-: 0.100 (0.060 & 0.040)
SECTION: S.W. 1/4, 6
2 QUARTER, T. 8 N., R. 7 W.,
UNITED STATES MILITARY LANDS,
TOWNSHIP: KILLBUCK
VILLAGE: KILLBUCK
COUNTY: HOLMES, OHIO
Date: NOVEMBER, 1990

Remove not the old landmark Proverbs 23:10

Earl R. Donaker
I, Earl R. Donaker, P.S., 7142, hereby certify this plat to have been prepared from a survey and to be correct to the best of my knowledge and belief.

170611
REC'D. JAN 10 1991
AT 2:20 O'CLOCK PM
RECORDED JAN 11 1991
Plat vs. 13, 126
Holmes Co. Ohio \$8.80
Richard Gravelle Recorder

13 PAGE 126

PLAT APPROVED
1/9/91 B