

HUBERT H. & FRANCES W. HUMMEL
225-607

HARDY TOWNSHIP
S.E. QTR. SECTION 25
TWP.-9N RANGE-6-W
HOLMES COUNTY, OHIO
MECHANIC TOWNSHIP
2ND. QTR. LOT 26
TWP.-8N RANGE-6W
HOLMES COUNTY, OHIO

26.379 ACRES

KLINE LUMBER COMPANY
242-735

13.226 ACRES
(12.724 AC.)

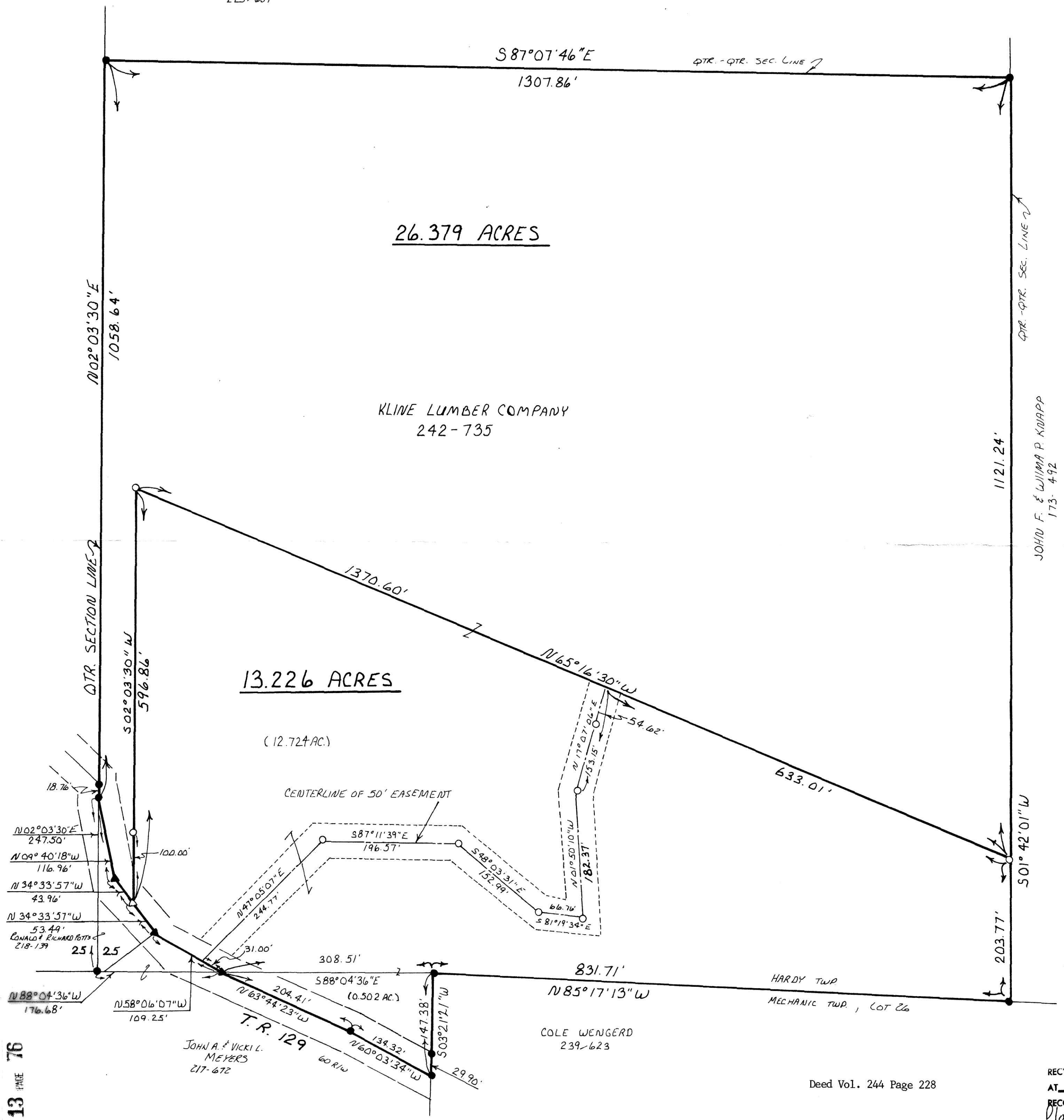
0 50 100 200
SCALE: 1" = 100'

- △ R.R. SPIKE SET
- ▲ R.R. SPIKE FOUND
- IRON PIN FOUND
- 3/8" REBAR WITH I.D. CAPSET
- I.D. CAP MARKED "BAKER 6938"

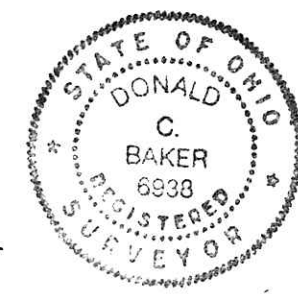
BEARINGS ASSUMED

REFERENCES

- PLAT VOLUME 10 PAGE 290
- PLAT VOLUME 10 PAGE 31
- PLAT VOLUME 12 PAGE 29



JOHN F. & WILLIAM P. KNAPP
173-492



I CERTIFY THIS SURVEY TO BE CORRECT
TO THE BEST OF MY KNOWLEDGE.

Donald C. Baker
DONALD C. BAKER P.S. 6938

4321 T.R. 252
GLENMONT, OH.

JUNE 19, 1989

164617

REC'D. JUL 26 1989
AT 9:44 O'CLOCK AM
RECORDED JUL 27 1989
Plat VOL 13 PG. 76
Holmes Co. Ohio Fee: \$1.60
Richard Craven Recorder

Deed Vol. 244 Page 228

JOHN A. & VICKI L. MEYERS
217-672

COLE WENGERD
239-623