

161845

HARDY TOWNSHIP
HOLMES COUNTY, OHIO
N.E. QTR., SEC. 17, T-9N, R-6W

Fence Near Sec.
Line Used For Line



Scale In Feet 1"=100'

Ervin & Esther Gingerich
Vol. 164, Pg. 238

Bearings Assumed

- Stone Found
- Iron Pin Found
- Iron Pin Set - 5/8" Rebar With Yellow Cap Marked "LONG-7115"

References:
Plat Vol. 2, Pg. 94
Plat Vol. 5, Pg. 113
Deeds Shown

Grantor:
Tranquil Acres Camp Ground, Inc.
Deed Vol. 218, Page 915

John M. & Doris J. Popick
Vol. 231, Pg. 141

N 89° 39' 18" E
906.90'
2.020 Ac.

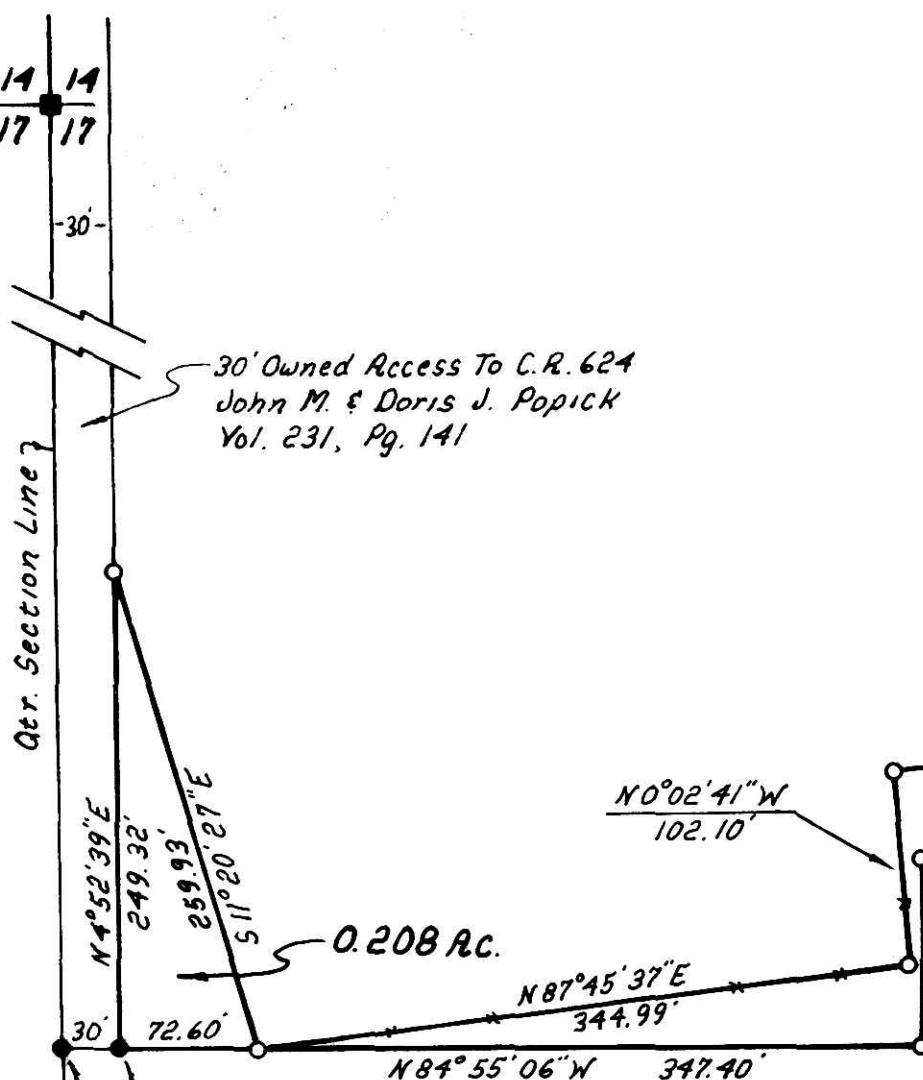
SPLIT
APPROVED
880170

888.09'
N 84° 55' 06" W

(2.020 Ac.)

This plat not approved for any use
that generates wastewater.

Dennis H. Murray 11-9-88
Sanitarian Date



0.208 Ac.

(0.208 Ac.)

This plat not approved for any use
that generates wastewater.

Dennis H. Murray 11-9-88
Sanitarian Date

SPLIT
APPROVED
880170



I Certify This Survey To Be Correct
To The Best Of My Knowledge.

Donald G. Long July 5, 1988
Donald G. Long P.S. 7115
Long Surveying Inc.
13301 T.R. 503
Big Prairie, Ohio 44611

161845

REC'D. NOV 18 1988
AT 4:21 O'CLOCK P.M.
RECORDED NOV 21 1988
Plat VOL 13 PG. 34
Holmes Co. Ohio Fee: \$9.35
Richard Kroen Recorder

Deed Vol. 241 Page 305

Qtr Section Line