

HOLMES COUNTY KILLBUCK TOWNSHIP

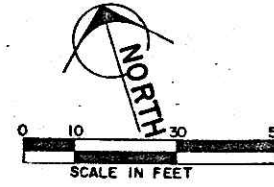
SECTION 3 TWP-8N RANGE-8W

CALC BY: [Blank]
 DATE: [Blank]
 CHKD BY: [Blank]
 DATE: [Blank]

HOL-520-9.57

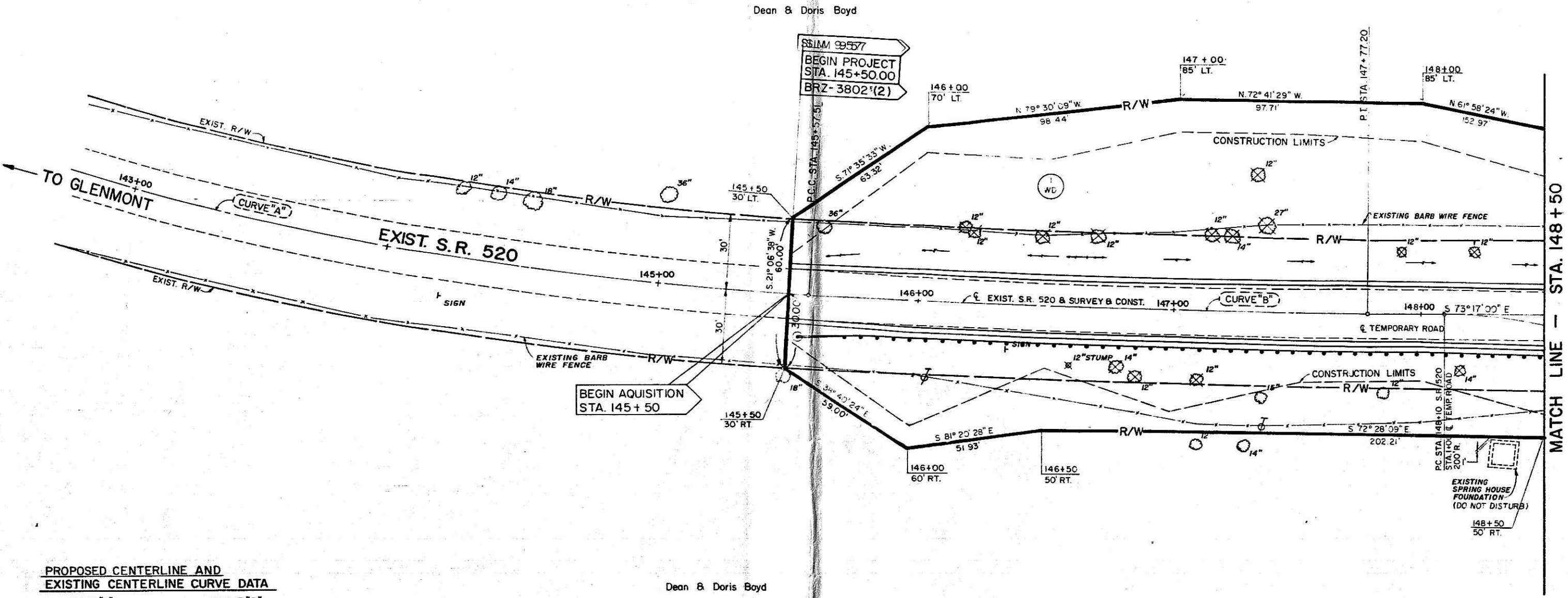
OHIO REGION 5

33
36



HOLMES COUNTY

R/W PLAN SHEET $\frac{4}{7}$



PROPOSED CENTERLINE AND EXISTING CENTERLINE CURVE DATA

CURVE "A"	CURVE "B"
PI. STA. 143+7914	PI. STA. 146+6741
$\Delta = 09^\circ 14' 08"$ LT.	$\Delta = 04^\circ 23' 38"$ LT.
R = 2,217.90'	R = 2,864.79'
T = 179.14'	T = 109.90'
L = 357.51'	L = 219.69'
CH = 357.12'	CH = 219.64'
D = 02° 35' 00"	D = 02° 00' 00"
E = 7.22'	E = 2.11'
PC. STA. 142+00	PC.C. STA. 145+57.51
P.C.C. STA. 145+57.51	PT. STA. 147+77.20

Dean & Doris Boyd

REV.	DATE	DESCRIPTION
2-25-88		COMPLETION DATE