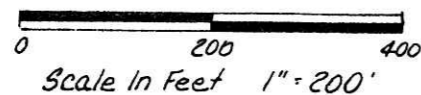


**RICHLAND TOWNSHIP
HOLMES COUNTY, OHIO
NE QTR. SECTION 13, T-8N, R-9W**

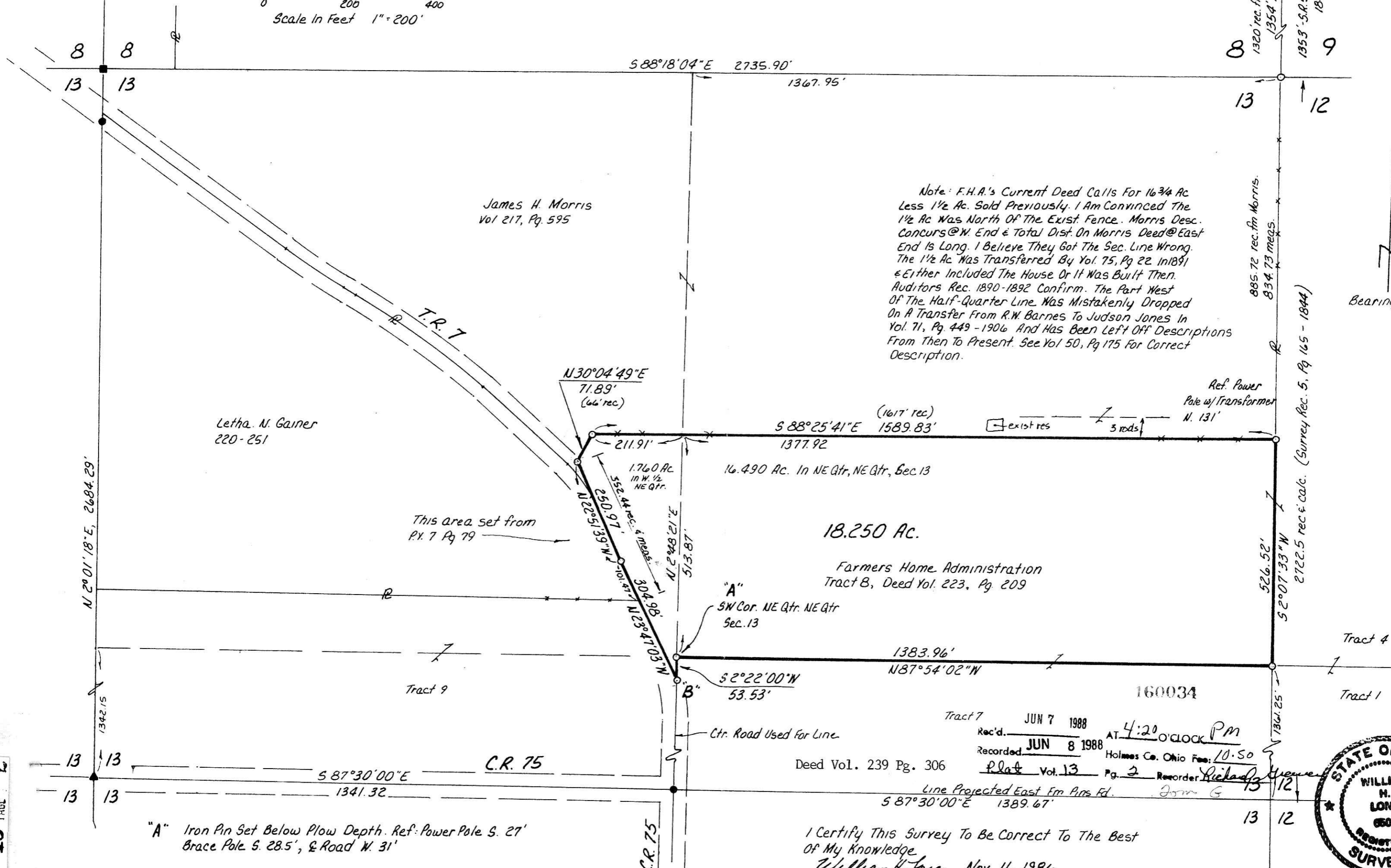


160034

- Iron Pin Found
- ▲ Railroad Spike Fd.
- Stone Found
- Iron Pin Set - 5/8" Rebar With Yellow Cap Marked "LONG-6505"

References:

- S.R. 5, Pg. 160 & 165
- Plat Vol. 7, Pg 79
- My Survey Of Morris's N. Line.
- Dtd. 5-8-86
- Deeds As Shown



Note: F.H.A.'s Current Deed Calls For 16 3/4 Ac Less 1 1/2 Ac. Sold Previously. I Am Convinced The 1 1/2 Ac Was North Of The Exist. Fence. Morris Desc. Concurs @ W. End & Total Dist. On Morris Deed @ East End Is Long. I Believe They Got The Sec. Line Wrong. The 1 1/2 Ac Was Transferred By Vol. 75, Pg 22 In 1891 & Either Included The House Or It Was Built Then. Auditors Rec. 1890-1892 Confirm. The Part West Of The Half-Quarter Line Was Mistakenly Dropped On A Transfer From R.W. Barnes To Judson Jones In Vol. 71, Pg. 449 - 1906 And Has Been Left Off Descriptions From Then To Present. See Vol 50, Pg 175 For Correct Description.

Bearings Assumed

Tract 7 JUN 7 1988
 Rec'd. JUN 8 1988 AT 4:20 o'clock PM
 Recorded JUN 8 1988 Holmes Co. Ohio Fee: 10.50
 Plat Vol. 13 Pg. 2 Recorder Richard J. ...
 Deed Vol. 239 Pg. 306



I Certify This Survey To Be Correct To The Best Of My Knowledge
 William H. Long Nov. 11, 1986
 William H. Long R.S. 6505